

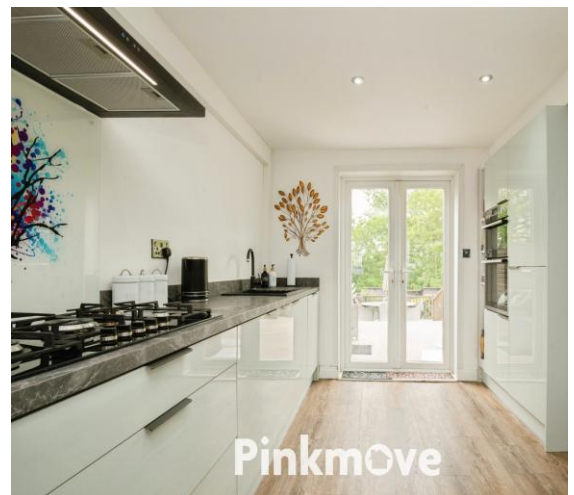


Pinkmove

Butterworth Close

Offers in the region of £220,000

- Extended three-bedroom family home
- Immaculately presented throughout
- Stylish, well-appointed family bathroom
- Private landscaped rear garden with decking and versatile log cabin
- EPC Rating: C



3 2 1

Pinkmove

01633 746088
team@pinkmove.co.uk



Pinkmove

About the property

This exceptional property has been meticulously maintained and appointed to an outstanding standard throughout, offering spacious and thoughtfully extended accommodation ideal for modern family living.

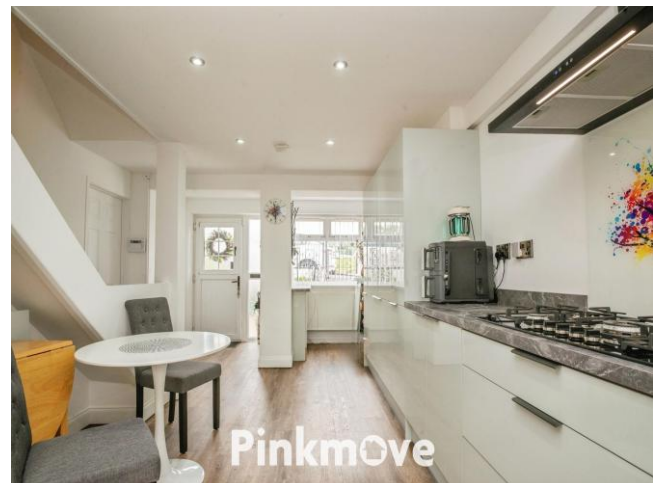
Having been cleverly extended to the front, the property provides larger-than-average living space while maximising both the front and rear gardens. The true heart of the home is the impressive open-plan kitchen/family room, featuring an extensive range of high-quality fitted units, integrated appliances, and ample space for dining and entertaining.

The property also boasts a comfortable and inviting lounge, complete with patio doors that open directly onto the rear garden, creating a seamless indoor-outdoor living experience.

To the first floor, there are three well-proportioned bedrooms. The principal bedroom benefits from stunning, recently fitted wardrobes, while the second double bedroom has been enhanced with a stylish en-suite shower room. A well-appointed family bathroom completes the first-floor accommodation.

A true hidden gem of this home is the beautifully landscaped rear garden, offering a high degree of privacy. With composite decking, it provides the perfect space for relaxing or entertaining. To the rear, a substantial log cabin offers fantastic versatility, ideal for use as storage, a home gym, bar, or office.

This superb property must be viewed to fully appreciate the quality, space, and lifestyle on offer.





Accommodation

Kitchen

Lounge

Bedroom 1

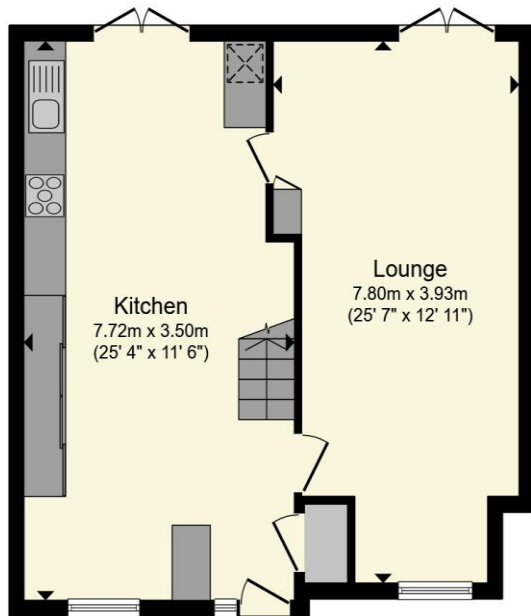
En-Suite

Bedroom 2

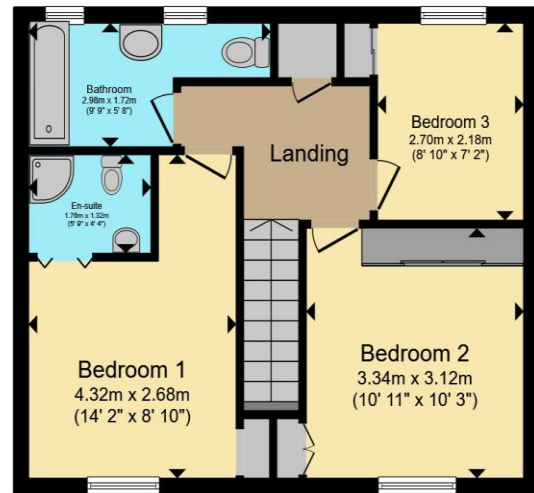
Bedroom 3

Bathroom

Floorplan



Ground Floor



First Floor

Total floor area 94.8 sq.m. (1,021 sq.ft.) approx

This floor plan is for illustrative purposes only. It is not drawn to scale. Any measurements, floor areas (including any total floor area), openings and orientation are approximate. No details are guaranteed, they cannot be relied upon for any purpose and they do not form part of any agreement. No liability is taken for any error, omission or misstatement. A party must rely upon its own inspection(s). Powered by www.localagent.com



Important Information

Note while we endeavour to make our sales details accurate and reliable, if there is any point which is of particular interest to you, please contact the office and we will be pleased to confirm the position for you. We have not personally tested any apparatus, equipment, fixtures, fittings or services and cannot verify they are in working order or fit for their purposes. Nothing in these particulars is intended to indicate that carpets or curtains, furnishings or fittings, electrical goods (whether wired or not). Gas fires or light fittings or any other fixtures not expressly included form part of the property offered for sale. This computer generated Floorplan, if applicable, is intended as a general guide to the layout and design of the property. It is not to scale and should not be relied upon for dimensions. Tenure: We cannot confirm the tenure of the property as we have not had access to the legal documents. The buyer is advised to obtain verification from their solicitor or surveyor.

Peter Alan Limited is registered in England and Wales under company number 2073153. Registered Office is Cumbria House, 16-20 Hockliffe Street, Leighton Buzzard, Bedfordshire, LU7 1GN. VAT Registration Number is 500 2481 05. For activities relating to regulated mortgages and non-investment insurance contracts, Peter Alan Limited is an appointed representative of Connells Limited which is authorised and regulated by the Financial Conduct Authority. Connells Limited's Financial Services Register number is 302221. Most buy-to-let

