



*jordan fishwick*

WITHINGTON  
Cape Street



## Cape Street, Withington, M20 3WA

£275,000



### The Property

A most appealing, TWO bedroom, converted coach house that was built circa 1866 and is a short walk from Withington Village, with easy access to Didsbury and Manchester City Centre. The stylish living space is warmed by gas central heating and in outline comprises:- Entrance hall with stairs leading to the first floor and under stair storage, lounge with laminate floor, fitted kitchen with a range of white units, master bedroom with stairs giving access to the attic room, second double bedroom, shower room with modern suite and chrome fittings and an excellent attic room which could be used as dressing/office room or further occasional bedroom. Externally, there is a stunning courtyard garden with stone chipped and flagged seating area, whilst the property also benefits from off-road parking.

### Directions

M20 3WA



- Two bedroom converted coach house
- Central Withington location
- Useful attic room
- Off-road parking
- Stunning courtyard garden
- Modern shower room
- Gas central heating & double glazing
- Ample storage

**Postcode** - M20 3WA

**EPC Rating** - D

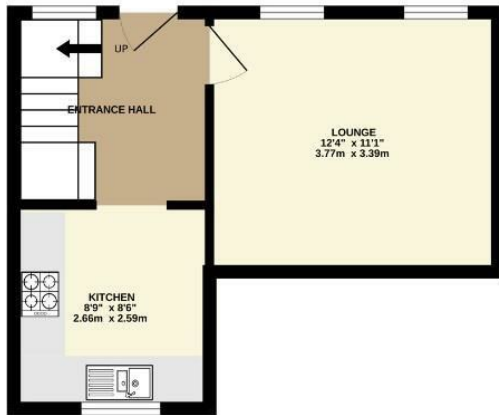
**Floor Area** - 789.00 sq ft

**Local Authority** - Manchester City Council

**Council Tax** - C



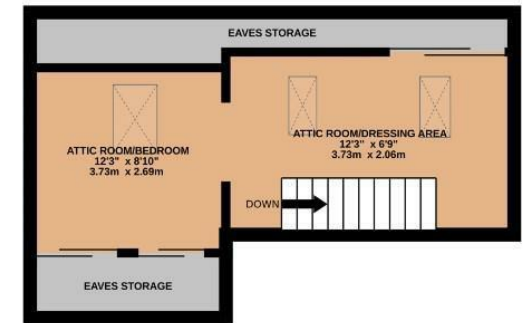
GROUND FLOOR  
280 sq.ft. (26.0 sq.m.) approx.



1ST FLOOR  
280 sq.ft. (26.0 sq.m.) approx.



2ND FLOOR  
228 sq.ft. (21.2 sq.m.) approx.



TOTAL FLOOR AREA : 789 sq.ft. (73.3 sq.m.) approx.  
Measurements are approximate. Not to scale. Illustrative purposes only  
Made with Metropix ©2026



These particulars are believed to be accurate but they are not guaranteed and do not form a contract. Neither Jordan Fishwick nor the vendor or lessor accept any responsibility in respect of these particulars, which are not intended to be statements or representations of fact and any intending purchaser or lessee must satisfy himself by inspection or otherwise as to the correctness of each of the statements contained in these particulars. Any floorplans on this brochure are for illustrative purposes only and are not necessarily to scale.

Offices also at: Wilmslow, Macclesfield, Hale, Sale, Chorlton, Glossop, Manchester & Salford

757-759 Wilmslow Road, Didsbury Village, Manchester

0161 445 4480

didsbury@jordanfishwick.co.uk  
www.jordanfishwick.co.uk