



**Cavendish Road,SKEGNESS PE25 2QU**

**welcome to**

**Cavendish Road, SKEGNESS**

SOLD WITH NO CHAIN -

SPACIOUS & VERSATILE 4/5 BED DETACHED HOUSE CLOSE TO TOWN CENTRE, OFFERING LOUNGE, KITCHEN AND UTILITY, MASTER BEDROOM + EN-SUITE BATHROOM, FAMILY BATHROOM, 2ND RECEPTION ROOM, LARGER THAN AVERAGE REAR GARDEN, GARAGE & DRIVEWAY FOR 3 VEHICLES



### Entrance Porch

Entrance door leads into the entrance porch which has a door leading into the entrance hallway:

### Entrance Hallway

Has a recently refurbished Wc with hand basin and tiled, radiator and doors leading into the following rooms:

### Lounge

21' 3" x 11' 10" ( 6.48m x 3.61m )

Has French doors to the rear elevation, window to the side and a radiator:

### Kitchen

17' 3" x 7' 10" ( 5.26m x 2.39m )

Comprising of wall, base and drawer units with worktop space over, sink, window to the rear elevation radiator and door leading into:

### Rear Porch Area

5' 2" x 6' 10" ( 1.57m x 2.08m )

Has a radiator, door to the rear, door into utility area and door into the garage:

### Utility Area

12' 11" x 6' 7" ( 3.94m x 2.01m )

Has wall and base units, window into the rear porch, radiator and door leading back into the hallway:

### Reception Room

12' 11" Min to bay x 13' 5" ( 3.94m Min to bay x 4.09m )

Has a bay window to the front elevation and a radiator.

### WC

Has a WC, sink with vanity storage, towel radiator and an opaque window.

### Landing

Has loft hatch access and doors leading into the following rooms:

### Bedroom 1

17' 8" x 18' 2" ( 5.38m x 5.54m )

Has 2 windows to the front elevation, walk in storage cupboard, ample space for furniture, 2 radiators and door into:

### En-Suite

Has a bath, separate walk in shower, sink, WC, bidet, 2 towel radiators and an opaque window.

### Bedroom 2

13' 5" x 13' ( 4.09m x 3.96m )

Has fitted wardrobes, radiator and a window.

### Bedroom 3

11' 11" x 8' 7" ( 3.63m x 2.62m )

Has fitted wardrobes, window and a radiator.

### Bedroom 4

20' 2" Max x 8' 10" min ( 6.15m Max x 2.69m min )

Has two radiators and two windows.

### Study

6' 5" x 6' 3" ( 1.96m x 1.91m )

Has a window and a radiator.

### Bathroom

Has a bath with shower over, sink, WC, bidet, opaque window and a radiator.

### External

externally, the property benefits from a driveway which leads to the garage. The rear is an impressive size which benefits from lawned area & patio area.

### Garage

26' x 10' 7" ( 7.92m x 3.23m )

Has an electric door, opaque window to the rear, boiler and side door leading to rear porch area.



**view this property online** [williamhbrown.co.uk/Property/SKG108374](http://williamhbrown.co.uk/Property/SKG108374)





**Ground Floor**



**First Floor**

This floor plan is for illustrative purposes only. It is not drawn to scale. Any measurements, floor areas (including any total floor area), openings and orientation are approximate. No details are guaranteed, they cannot be relied upon for any purpose and they do not form part of any agreement. No liability is taken for any error, omission or misstatement. A party must rely upon its own inspection(s). Powered by [www.focalagent.com](http://www.focalagent.com)

**welcome to**

## **Cavendish Road, SKEGNESS**

- DETACHED 4/5 BED HOUSE
- GARAGE & DRIVE FOR 3 VEHICLES
- MASTER BED WITH EN-SUITE
- LARGE REAR GARDEN
- WALKING DISTANCE TO TOWN CENTRE

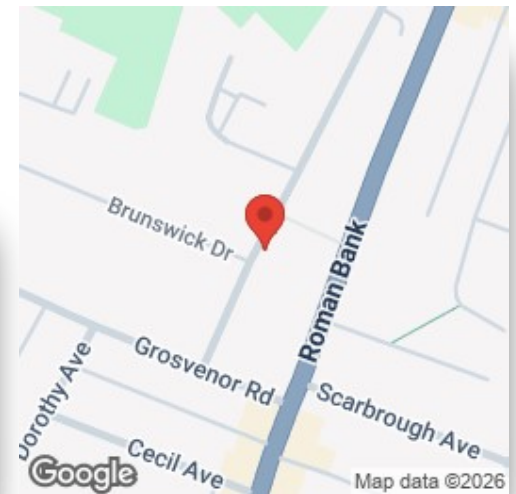
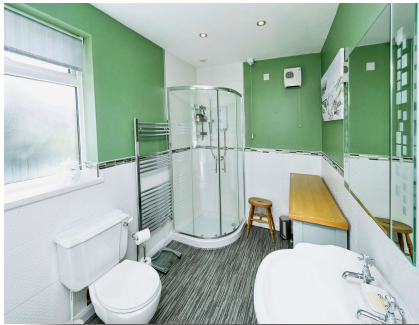
Tenure: Freehold EPC Rating: D

Council Tax Band: D

### **directions to this property:**

See Multi-map illustration

# £295,000



Please note the marker reflects the postcode not the actual property

**view this property online** [williamhbrown.co.uk/Property/SKG108374](http://williamhbrown.co.uk/Property/SKG108374)



Property Ref:  
SKG108374 - 0012

1. MONEY LAUNDERING REGULATIONS Intending purchasers will be asked to produce identification documentation at a later stage and we would ask for your co-operation in order that there is no delay in agreeing the sale. 2. These particulars do not constitute part or all of an offer or contract. 3. The measurements indicated are supplied for guidance only and as such must be considered incorrect. Potential buyers are advised to recheck measurements before committing to any expense. 4. We have not tested any apparatus, equipment, fixtures or services and it is in the buyers interest to check the working condition of any appliances. 5. Where an EPC, or a Home Report (Scotland only) is held for this property, it is available for inspection at the branch by appointment. If you require a printed version of a Home Report, you will need to pay a reasonable production charge reflecting printing and other costs. 6. We are not able to offer an opinion either written or verbal on the content of these reports and this must be obtained from your legal representative. 7. Whilst we take care in preparing these reports, a buyer should ensure that his/her legal representative confirms as soon as possible all matters relating to title including the extent and boundaries of the property and other important matters before exchange of contracts.

William H Brown is a trading name of Sequence (UK) Limited which is registered in England and Wales under company number 4268443, Registered Office is Cumbria House, 16-20 Hockliffe Street, Leighton Buzzard, Bedfordshire, LU7 1GN. VAT Registration Number is 500 2481 05.

  
**william h brown**



**01754 768311**



[Skegness@williamhbrown.co.uk](mailto:Skegness@williamhbrown.co.uk)



20 Roman Bank, SKEGNESS, Lincolnshire, PE25 2RU



**[williamhbrown.co.uk](http://williamhbrown.co.uk)**