

# King's Mill Way

Uxbridge • • UB9 4BT

PCM: £1,600 PCM



coopers  
est 1986

A Truly Stunning, Modern & Contemporary ONE BEDROOM Luxury apartment situated in the popular Kings Island Development close to Uxbridge High Street. A multitude of Bars, Restaurants and Shopping facilities on your doorstep. Accommodation; Bedroom with fitted wardrobes, Luxury bathroom, Large lounge, Fully fitted kitchen with appliances. Benefits; Allocated parking, Entry-phone system, Gas central heating, Double glazing. Furnished.

Walking Distance to Uxbridge Town Centre

Gated Development

Balcony

Fully Fitted Kitchen

Concierge

Close to A40/M40

Well Presented

Allocated Parking

Modern Development

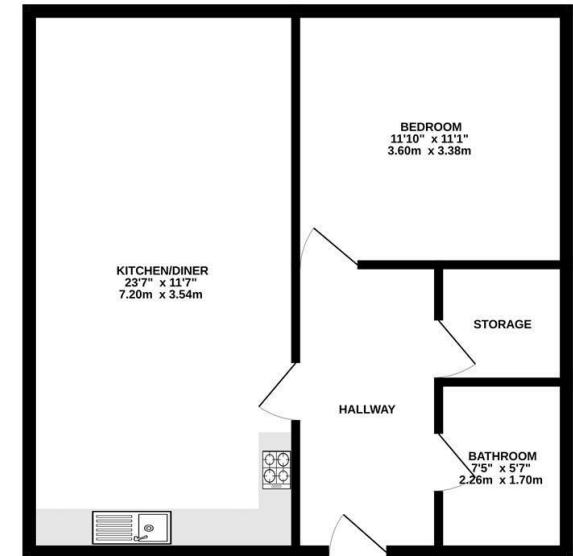
Beautiful Views

**Available Date**

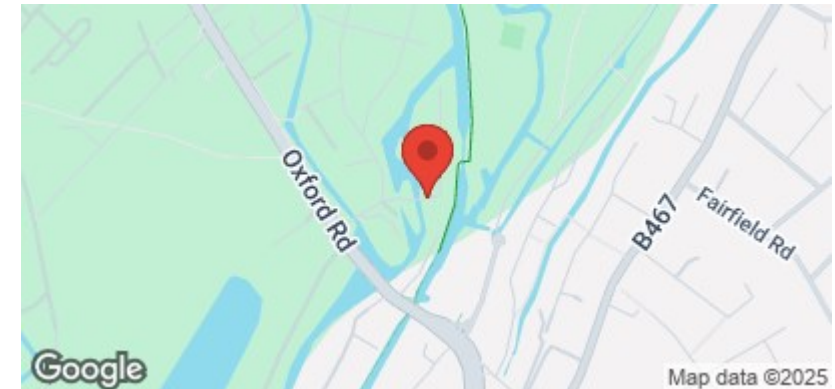
29th December 2025



GROUND FLOOR  
554 sq.ft. (51.4 sq.m.) approx.



TOTAL FLOOR AREA: 554 sq.ft. (51.4 sq.m.) approx.  
While every attempt has been made to ensure the accuracy of the floorplan contained here, measurements of doors, windows, rooms and any other items are approximate and no responsibility is taken for any error, omission or misstatement. This plan is for illustrative purposes only and should be used as such by any prospective purchaser. The services, systems and appliances shown have not been tested and no guarantee as to their operability or efficiency can be given.  
Made with Metropix C2025



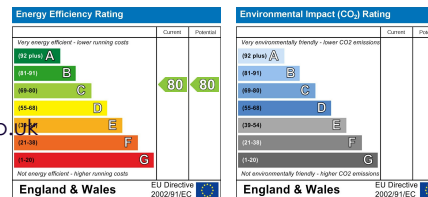
**coopers**  
est 1986

**01895 230 103**

**109 Hillingdon Hill, Hillingdon Village,  
Middlesex, UB10 0JQ**

propertymanagement@coopersresidential.co.uk

**CoopersResidential.co.uk**



Important Notice: These particulars, whilst believed to be accurate are set out as a general outline only for guidance and do not constitute any part of an offer or contract. Intending purchasers should not rely on them as statements or representation of fact, but must satisfy themselves by inspection or otherwise has the authority to make or give any representation or warranty in respect of the property.