



## Rotherhithe Street, SE16

£325,000

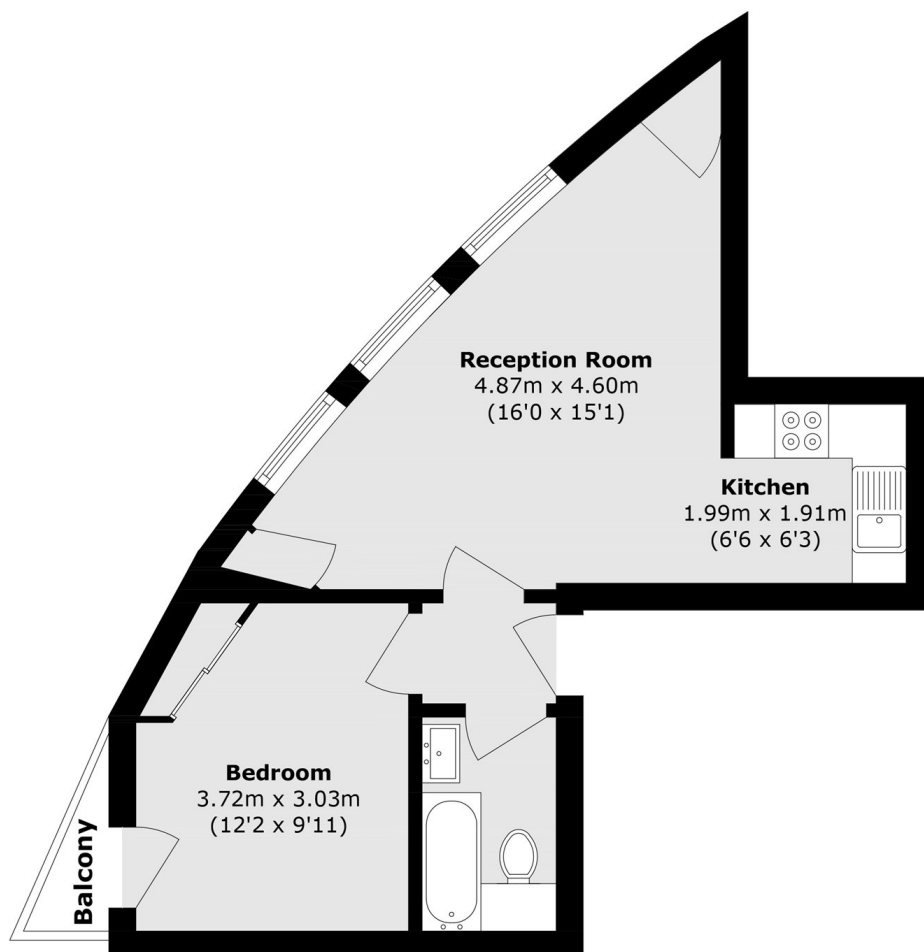
Situated within this sought after riverside development, this one double bedroom flat is in excellent condition and has a large open plan kitchen living space, private balcony and ample storage.

Located directly along the river, Tradewind Heights is 0.5 miles from Rotherhithe station and 0.6 miles from Canada Water station. An abundance of shops, cafés, restaurants and pubs are also close by.

### Features

- One Double Bedroom
- Excellent Condition
- Fantastic Location
- Riverside Development
- Allocated Parking Space

# Rotherhithe Street, London, SE16



Total area (approx.): 39.8 sq. m (428.4 sq. ft)  
Balcony (approx.): 1.0 sq. m (10.7 sq. ft)