



Price
£250,000

Freehold

2x  1x  1x 

**Amethyst Grove,
Waterlooville,
Hampshire, PO7**

OVER 60?

Secure this property
for up to **59% less!**

cubitt & west
Helping you move forwards



Main features

- Well presented throughout while still offering the chance to put your own stamp on
- Allocated parking for three cars
- End terrace next to green, offering additional security and privacy
- Private cul-de-sac in popular Tempest area
- Offered with no forward chain

Accommodation

GROUND FLOOR

Kitchen: 11'7 x 5'11 (3.53m x 1.80m)

Lounge/Diner: 13'5 x 11'11 (4.09m x 3.63m)

FIRST FLOOR

Landing

Bedroom 1: 11'11 x 9'3 (3.63m x 2.82m)

Bedroom 2: 11'11 x 8'11 (3.63m x 2.72m)

Bathroom

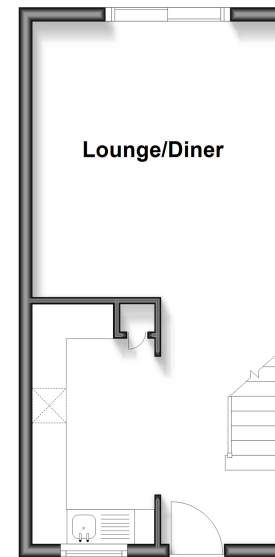
OUTSIDE

Front and Rear Gardens

Allocated Parking

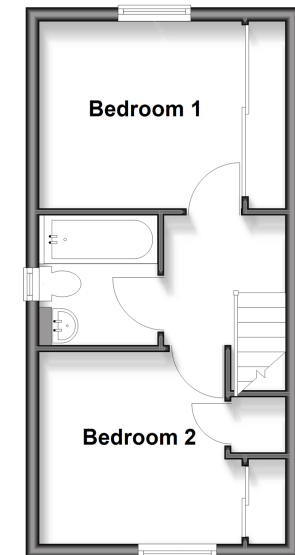
Ground Floor

Approx. 27.7 sq. metres (297.7 sq. feet)



First Floor

Approx. 27.7 sq. metres (297.7 sq. feet)



Call WaterlooVille - 02392 267244 ■ cubittandwest.co.uk

■ Through a Homewise Home For Life Plan people aged 60+ can secure this property for up to 59% less, by purchasing a Lifetime Lease



901055YB/20260505/EC/EC