



## BOURNEVALE ROAD, SW16

£575,000

Two bedrooms  
Victoria conversion  
Landscaped garden  
Long lease  
Beautifully presented  
EPC: C

@marshandparsons  
marshandparsons.co.uk

MARSH &  
PARSONS

# ABOUT THE PROPERTY

A beautifully presented two bedroom, Victorian conversion, ground floor garden flat. The property has retained its original features and boasts both a well landscaped garden as well as off street parking. The finish is perfect for a buyer to walk in and purchase this property without needing to do anything.

Bournevale Road is ideally located in a quiet residential area, just a short walk from local shops, cafés, and everyday amenities. The property offers easy access to public transport links like Streatham Station and nearby green spaces like Tooting Bec Common, making it convenient for commuting while enjoying a peaceful neighbourhood setting.

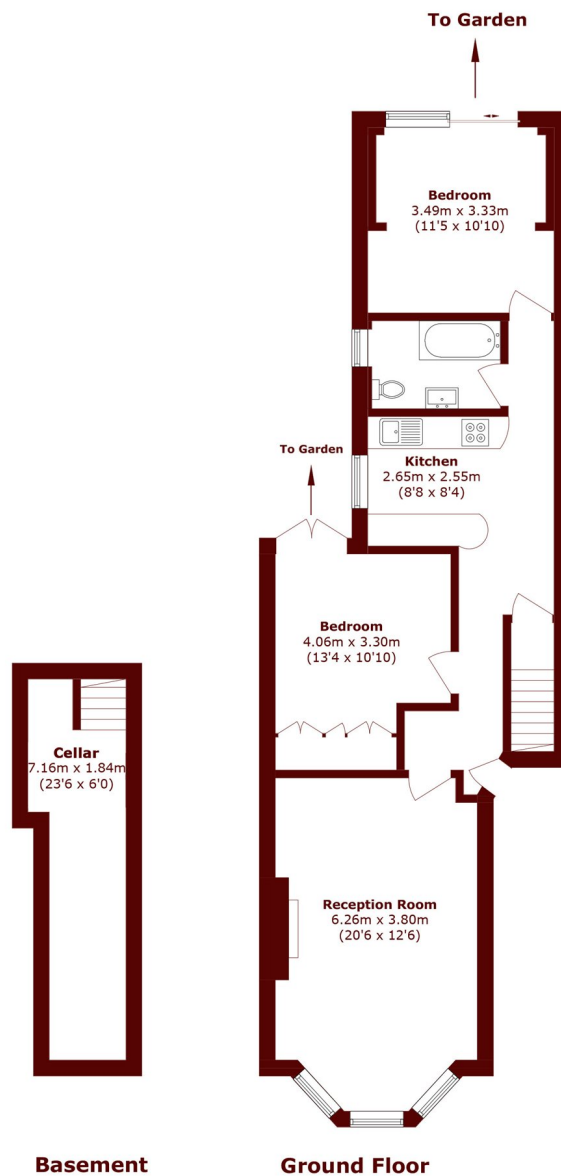








# STEP INSIDE BOURNEVALE ROAD



Total area (approx.): 83.0 sq. m (893.4 sq. ft)

**Streatham**  
020 8671 0171

Energy Rating: We aim to make our particulars both accurate and reliable. However, they are not guaranteed; nor do they form part of an offer or contract. If you require clarification on any points then please contact us, especially if you're traveling some distance to view. Please note that appliances and heating systems have not been tested and therefore no warranties can be given as to their good working order

**MARSH &  
PARSONS**