



Blewitt Street

Guide Price £160,000 - £165,000

- Guide Price £160,000 to £165,000
- Two Bedrooms
- Lounge/Diner
- Enclosed Rear Garden
- Family Bathroom
- Prime Location Within Walking Distance to Newport City Centre
- Close to Shops, Schools and Leisure Facilities
- Excellent Transport Links
- EPC Rating: D



 3  1  2

Pinkmove

01633 746088
team@pinkmove.co.uk



About the property

This two-bedroom terraced house on Blewitt Street, Newport, offers excellent potential for a buyer looking to put their own stamp on a property.

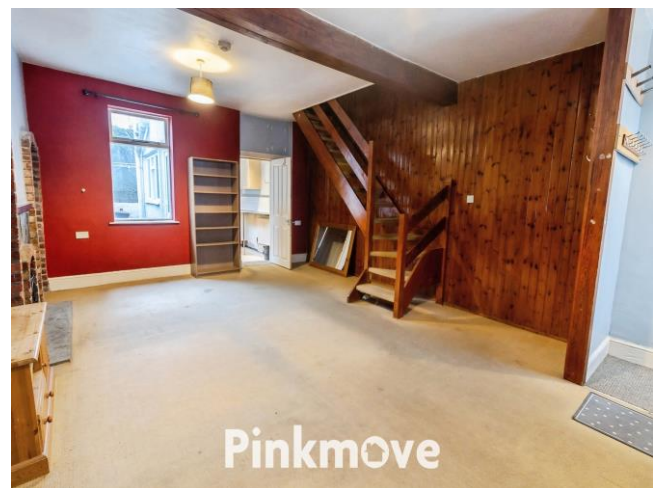
The street sits within a mixed residential and commercial area, providing convenient access to local amenities.

Upon entering, you are welcomed into an open-plan lounge diner featuring two charming fireplaces, creating a warm and characterful living space. The kitchen is located at the rear of the property and leads directly to the enclosed patio garden, offering a private outdoor area ideal for low-maintenance enjoyment.

Upstairs, the home provides two generous double bedrooms along with a family bathroom. Some decorative updating would enhance the overall finish, making it a great opportunity for first-time buyers or those seeking a project. On-street parking is available at the front.

The property is well placed for everyday convenience, with shops and services easily accessible within the surrounding Newport area. Families will appreciate the proximity to local schools along with the convenience of Newport Town Centre easily accessible within walking distance.

Transport links are strong, with Newport offering an extensive and reliable bus and rail network along with the M4 motorway offering opportunities for commuters.





Accommodation

Lounge/Diner

20' 5" x 15' 10" (6.22m x 4.83m)

Kitchen

11' 8" x 6' 4" (3.56m x 1.93m)

Bathroom

11' 8" x 6' 5" (3.56m x 1.96m)

Bedroom 1

9' 6" x 15' 11" (2.90m x 4.85m)

Bedroom 2

10' 8" x 10' 5" (3.25m x 3.17m)

01633 746088

team@pinkmove.co.uk

Pinkmove

Floorplan



Total area: approx. 74.1 sq. metres (797.1 sq. feet)

38 Blewitt Street

Important Information

Note while we endeavour to make our sales details accurate and reliable, if there is any point which is of particular interest to you, please contact the office and we will be pleased to confirm the position for you. We have not personally tested any apparatus, equipment, fixtures, fittings or services and cannot verify they are in working order or fit for their purposes. Nothing in these particulars is intended to indicate that carpets or curtains, furnishings or fittings, electrical goods (whether wired or not). Gas fires or light fittings or any other fixtures not expressly included form part of the property offered for sale. This computer generated Floorplan, if applicable, is intended as a general guide to the layout and design of the property. It is not to scale and should not be relied upon for dimensions. Tenure: We cannot confirm the tenure of the property as we have not had access to the legal documents. The buyer is advised to obtain verification from their solicitor or surveyor.

Peter Alan Limited is registered in England and Wales under company number 2073153, Registered Office is Cumbria House, 16-20 Hockliffe Street, Leighton Buzzard, Bedfordshire, LU7 1GN. VAT Registration Number is 500 2481 05. For activities relating to regulated mortgages and non-investment insurance contracts, Peter Alan Limited is an appointed representative of Connells Limited which is authorised and regulated by the Financial Conduct Authority. Connells Limited's Financial Services Register number is 302221. Most buy-to-let

