



Christian Street, E1

£375,000

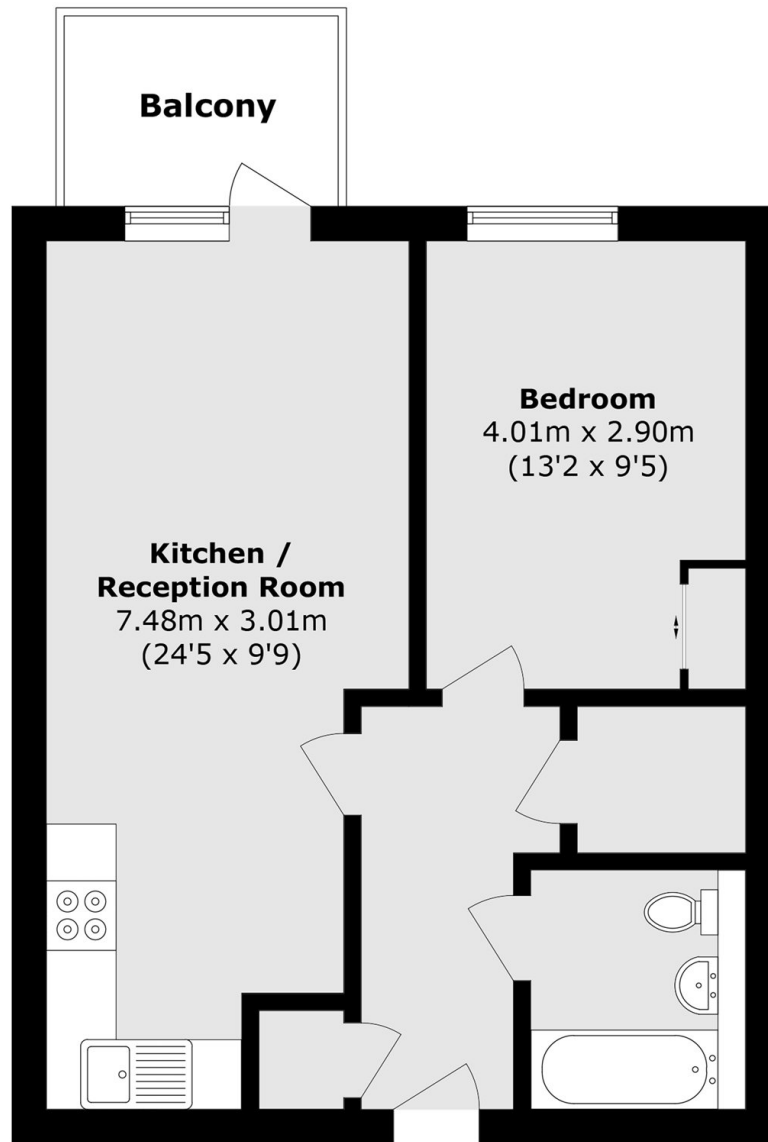
This one bedroom apartment is on the sixth floor of a modern development. It boasts a spacious open-plan reception room and a double bedroom with in-built storage and a further private balcony off of the lounge with views. The floor to ceiling windows around the property allow for natural light throughout. The development offers a 24hr concierge service and residents gym.

Christian Street is located close to the amenities available on Commercial Road and offers excellent transport links between Shadwell and Aldgate East stations.

Features

- Secure Development
- On-Site Concierge
- Open Plan Living Room & Kitchen
- One double bedroom
- Private Balcony

Christian Street,
London, E1



Total area (approx.): 45.0 sq. m (484.4 sq. ft)

Balcony area (approx.): 3.9 sq. m (41.9 sq. ft)