

Streatham Hill, SW2

£1,995 Per calendar month

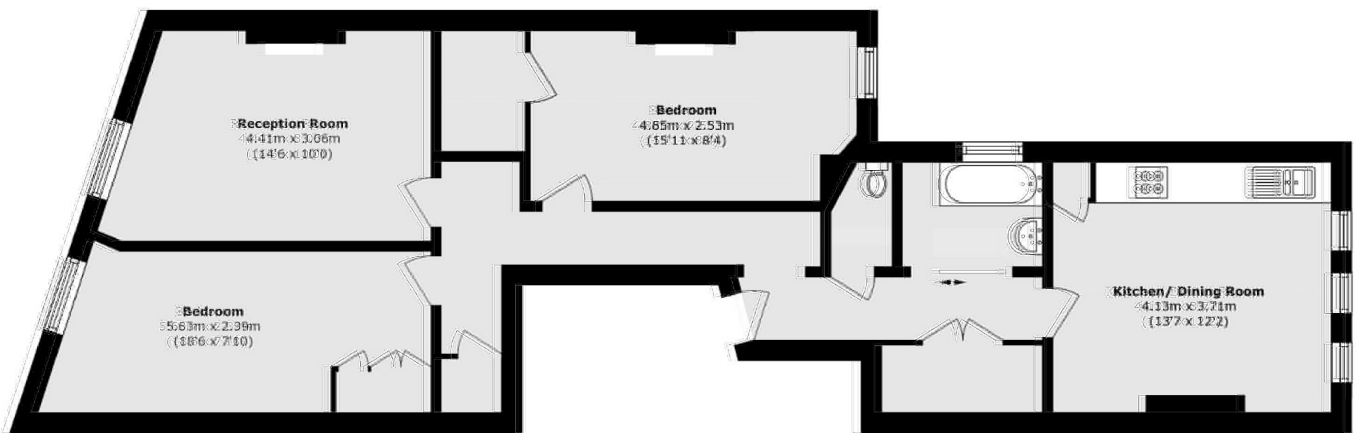
A spacious two double bedroom flat on the first floor of a period conversion. This property offers high ceilings, a modern kitchen and renovated bathroom.

The property is very convenient for access to Streatham High Road and Streatham Hill mainline station which has frequent trains to Victoria, via Clapham Junction.

Features

First Floor Flat
Two Double Bedrooms
Eat-in Kitchen
Wooden Floors
High Ceilings
Neutral Decor

Streatham Hill, London, SW2



Total area (approx.): 79.5 sq. m (855.7 sq. ft)