



**Price**  
**£425,000**

**Freehold**

2x  1x  2x 

**Flaxman Drive,  
Maidstone, Kent ME16**

**OVER 60?**

Secure this property  
for up to **59% less!**

*Wards*  
Helping you move forwards



## Main features

- Beautifully presented chalet bungalow
- Extended modern fitted kitchen and wet room
- Open plan lounge/dining area
- Ample off road parking with a car port and single garage
- Quiet cul-de-sac setting in the heart of Allington

## Accommodation

### GROUND FLOOR

Kitchen: 21'7 (6.58m) x 8'9 (2.67m) narrowing to 6'4 (1.93m)  
 Lounge/Dining Area: 15'10 x 10'2 (4.83m x 3.10m) plus 12'0 x 10'7 (3.66m x 3.23m)  
 Bedroom 1: 12'1 x 10'2 (3.69m x 3.10m)  
 Bedroom 2: 9'0 x 8'3 (2.75m x 2.52m)  
 Wet Room

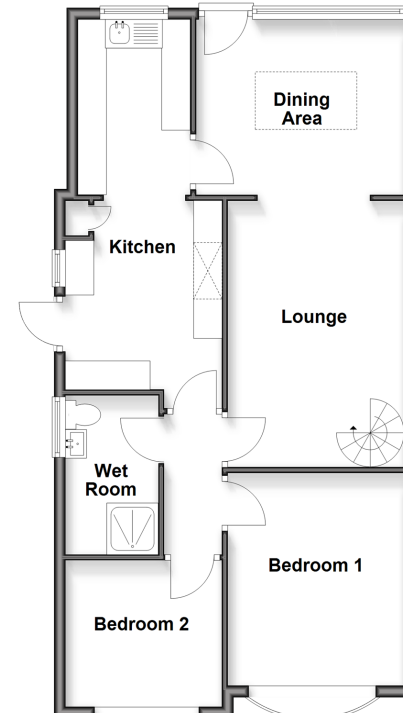
### FIRST FLOOR

Landing  
 Loft Room: 14'6 x 9'9 (4.42m x 2.97m)

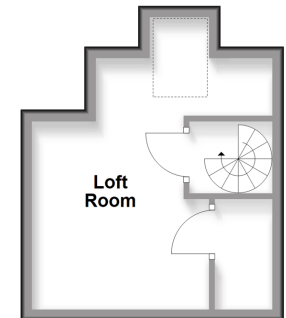
### OUTSIDE

Rear Garden  
 Front Garden  
 Driveway/Car Port  
 Garage

**Ground Floor**  
 Approx. 69.8 sq. metres (751.2 sq. feet)



**First Floor**  
 Approx. 18.1 sq. metres (194.7 sq. feet)



Call Maidstone - 01622 683737 ■ [wardsofkent.co.uk](http://wardsofkent.co.uk)

■ Legal advice should be taken to verify fixtures/fittings, planning, alterations and/or lease details  
 ■ Through a Homewise Home For Life Plan people aged 60+ can secure this property for up to 50% less, by purchasing a Lifetime Lease.

■ Appliances & services are untested, dimensions are approximate and floor plans are not to scale



13159114/20250926/DS/DS