



High Street

Thames Ditton, KT7 0SD

£1,195,000

A well proportioned three-bedroom double-fronted home, ideally positioned in a secluded setting just off Thames Ditton High Street. Blending the charm of a cottage with the simplicity of a fully refurbished modern interior, this property offers a combination of character and contemporary living. The ground floor is centred around a stunning high-specification open-plan kitchen, dining, family room, complete with separate utility room. A bright and spacious living room provides an additional reception space, and there is also a downstairs WC. Both reception rooms feature French doors that open directly onto the walled garden, creating a seamless indoor-outdoor feel. Upstairs, the property boasts three good sized double bedrooms, each with its own en-suite. Two of the bedrooms have private balconies overlooking a beautifully maintained walled garden, along with ample built-in storage throughout. Further benefits include two private parking spaces and offered to the market chain free.

- Modern double fronted family home
- Superb open plan kitchen / family room
- Separate utility room / Ample fitted storage
- West facing walled Garden
- 3 double bedrooms with en-suites
- Quiet private location near the High Street
- Allocated parking for 2 cars
- Chain Free

Floor Plan

Hawkes Cottage

Approximate Gross Internal Area = 143.9 sq m / 1549 sq ft

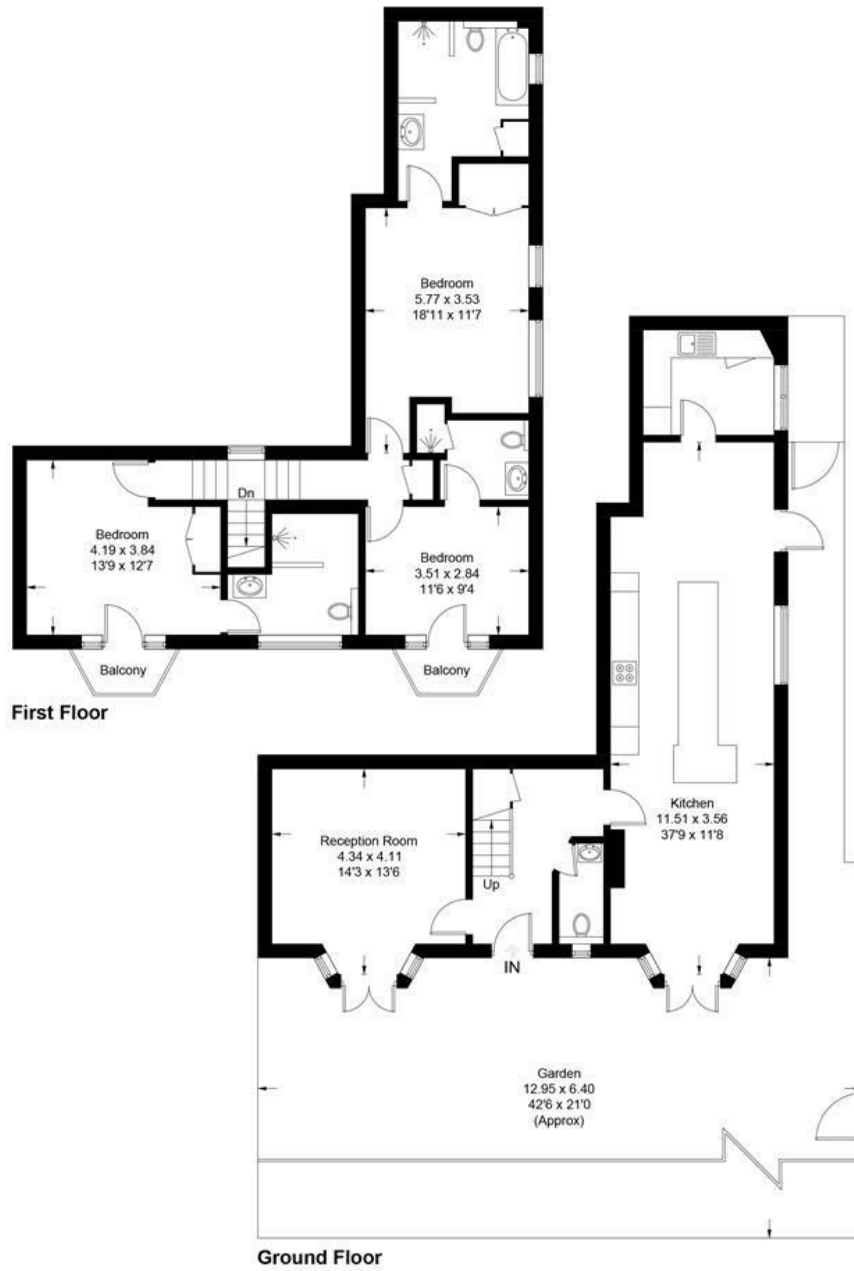
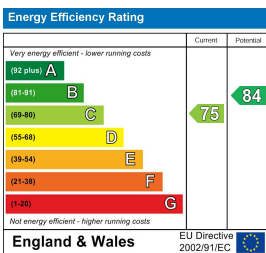


Illustration for identification purposes only, measurements are approximate, not to scale. Fourlabs.co © (ID1298792)

Energy Efficiency Graph



These particulars, whilst believed to be accurate are set out as a general outline only for guidance and do not constitute any part of an offer or contract. Intending purchasers should not rely on them as statements of representation of fact, but must satisfy themselves by inspection or otherwise as to their accuracy. No person in this firm's employment has the authority to make or give any representation or warranty in respect of the property.