

clever



clever 

38 Edgcumbe Park Road

Peverell, Plymouth, PL3 4NL

Offers over £300,000

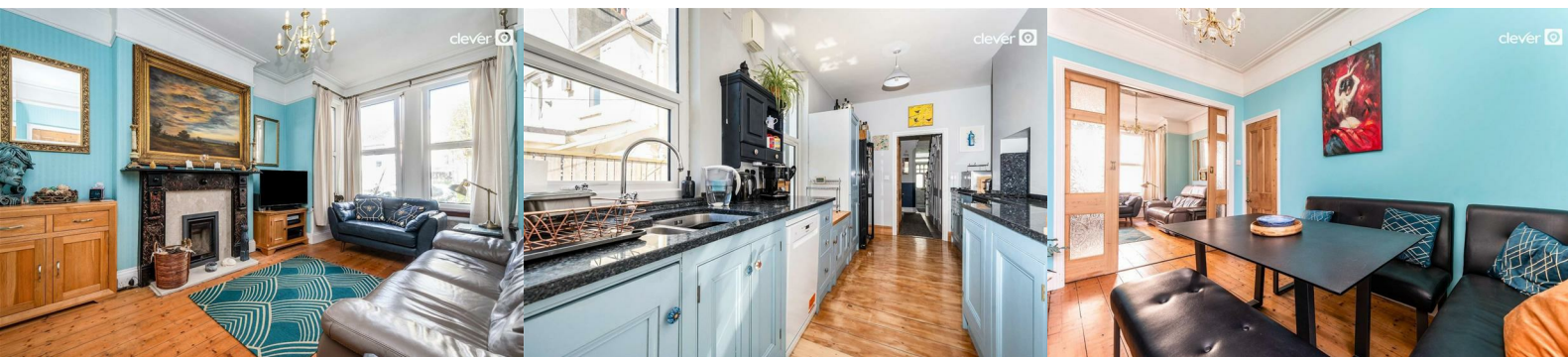


Situated in one of Plymouth's most desirable locations, this charming period style mid-terrace house on Edgcumbe Park Road offers a perfect blend of period features and modern living. With three well-proportioned bedrooms, this property is ideal for families or those seeking extra space. The two inviting reception rooms provide ample room for relaxation and entertaining, making it a wonderful home for social gatherings.

The house is presented in immaculate condition, ensuring that you can move in with ease and enjoy the comforts of your new home from day one. The tasteful decor and well-maintained interiors highlight the property's character while providing a warm and welcoming atmosphere.

In addition to its aesthetic appeal, this property benefits from being situated within excellent school catchments, making it an attractive option for families prioritising education. The surrounding area boasts a vibrant community and convenient access to local amenities, ensuring that everything you need is within reach.

This delightful home on Edgcumbe Park Road is not just a property; it is a lifestyle choice in a sought-after neighbourhood. Whether you are looking to settle down or invest, this house presents a wonderful opportunity to enjoy the best of Plymouth living.



clever 

clever 

clever 

