

Unit 6 13 Burton Place, Manchester, Lancashire, M15 4PT
Tel: 0161 637 8336
Email: contactus@ascendproperties.com
www.ascendproperties.com

Ascend

Built on higher standards



Millington House, Dale Street, Manchester

£1,050 PCM

This stunning Grade II listed conversion rests in the heart of Manchester's hip and vibrant Northern Quarter and is absolutely perfect for tenants looking to live in the thick of all the action.

With tonnes of space to spare, this fab one bedroom apartment comes complete with double-height ceilings and large windows which show this apartment off to its full potential and give you plenty of Manchester's sunny skies. Inside you'll find a super-swish design throughout with high-quality, contemporary furniture. The double bedroom is bright and airy with more than enough room to spread out and the master bathroom is ultra-stylish and modern.

The location couldn't be more spot-on either. Piccadilly train station is literally just a 2 minute stroll away - how perfect is that? So whether it's for work or play, the whole of Manchester is your oyster.

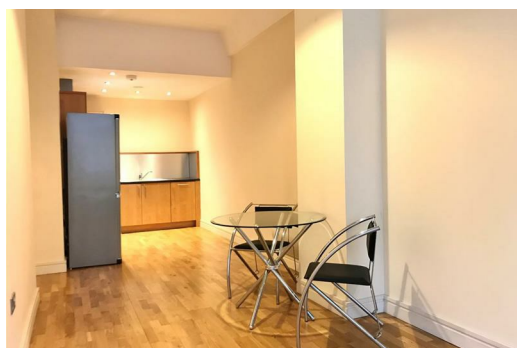
If you're interested in having a closer look or have any questions, do get in touch. And just so you know, the pictures for this apartment are for marketing purposes only, so the internal fixtures, fittings and furnishings may vary.

****Available 6th February 2026****

Deposit: £1210

Council Tax Band: C

12 Month Minimum Tenancy





| Energy Efficiency Rating | | Environmental Impact (CO ₂) Rating | |
|--------------------------|-------|--|-------|
| Rating | Score | Rating | Score |
| A | 92 | A | 92 |
| B | 81 | B | 81 |
| C | 69 | C | 69 |
| D | 58 | D | 58 |
| E | 49 | E | 49 |
| F | 39 | F | 39 |
| G | 29 | G | 29 |
| H | 19 | H | 19 |
| I | 9 | I | 9 |
| J | 1 | J | 1 |