

0.8 Village Centre, £280,000*

(*Other charges apply)

RICHMOND
VILLAGES

Part of Bupa



1



1



EPC - C



1 bedroom ground floor apartment

We are delighted to offer this rarely available, south-facing one-bedroom ground-floor apartment. Perfectly situated close to the Wellness Spa and central amenities, the apartment benefits from direct access to a private patio with attractive views across the landscaped gardens and towards the Painswick Valley.

Specification

- Modern fitted kitchenette with under-cupboard lighting and built-in fridge.
- Light and bright living room with electric fire with Bath stone-effect surround and underfloor heating throughout.
- French doors opening onto a sunny, south-facing patio.
- Spacious double bedroom with fitted wardrobes and underfloor heating.
- Contemporary en-suite shower room with walk-in shower, WC and wash-hand basin.
- Entrance hall with built-in storage.
- TV and satellite points*.
- Well stocked flower borders and lawns maintained by the Village Gardeners.
- Ideally situated near the main village centre and facilities, offering both convenience and a tranquil setting.
- Allocated parking space for one car.

*Satellite subscription not included.

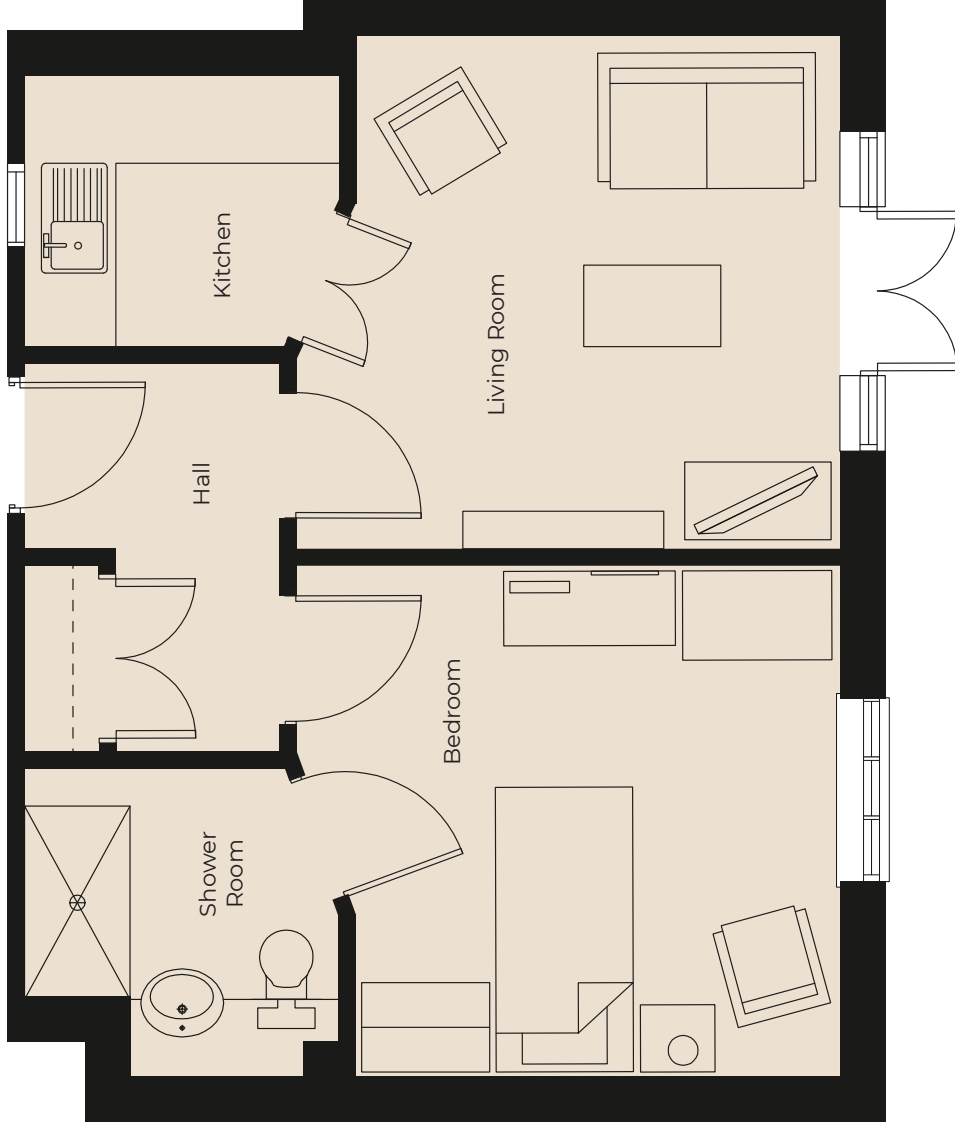
Important Notice: These particulars are intended to give a fair and substantially correct overall description. Other fees and charges apply, please contact the Village Advisers for further details. Properties are sold on a 125 year lease and this property has 105 years remaining.

01452 810 203
painswick@richmond-villages.com

Richmond Villages Painswick,
Stroud Road, Painswick, Gloucestershire GL6 6UL

0.8 Village Centre

Kitchen	2133mm x 2042mm
	7' x 6'7"
Living Room	3840mm x 3657mm
	12'6" x 11'10"
Bedroom	3627mm x 3352mm
	11'9" x 11'
Shower Room	2225mm x 2133mm
	7'3" x 7'



These particulars are intended to give a fair and substantially correct overall description.

Measurements have been taken at 1500mm skimming height.

All dimensions are approximate. Bedroom measurements include the wardrobe if applicable. Room measurements include bay windows if applicable.

Furniture layout is to give an indicative impression. Although all efforts have been made to ensure its accuracy at time of print dimensions, fixtures, fittings, finishes and specifications are subject to change without notice.

The properties are sold unfurnished.

