



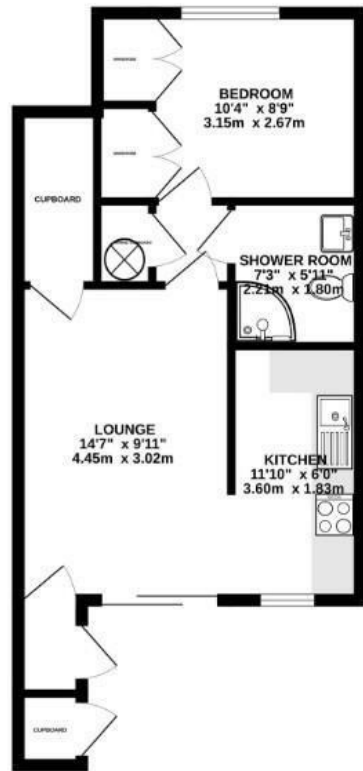
RESIDENTIAL



## Plot 23, St. Marys Road, Sheffield, Yorkshire, S2 4AW

Prices from £189,995

- Brand New Luxury Development
- Consisting of studios, 1beds and 2beds
- Beautiful Internal Finishes
- Optional Parking Available
- Estimated Rental Yields Circa 7%
- Projected Completion Q2 2027



## Directions

## Viewings

Viewings by arrangement only. Call 0113 3224 345 to make an appointment.

## Council Tax Band

## EPC Rating:

Energy Efficiency Rating		
	Current	Potential
<i>Very energy efficient - lower running costs</i>		
(92 plus) <b>A</b>		
(81-91) <b>B</b>		
(69-80) <b>C</b>		
(55-68) <b>D</b>		
(39-54) <b>E</b>		
(21-38) <b>F</b>		
(1-20) <b>G</b>		
<i>Not energy efficient - higher running costs</i>		
<b>England &amp; Wales</b>	EU Directive 2002/91/EC	