



Guide Price
£350,000

Freehold

3x  1x  1x 

**The Fairway, Rochester,
Kent, ME1**

OVER 60?

Secure this property
for up to **59% less!**

Wards
Helping you move forwards



Main features

- Perfect first time buy!
- No work required and ready to move straight into!
- Positioned overlooking a picturesque green in a sought after location
- Easy motorway access M2/A2/M20
- Catchment area for top performing schools

Accommodation

GROUND FLOOR

Hallway

Lounge: 15'4 x 12'0 (4.68m x 3.66m)

Kitchen/Diner: 19'2 x 9'4 (5.85m x 2.85m)

Conservatory: 15'2 x 9'7 (4.63m x 2.92m)

Toilet: 4'5 x 2'7 (1.35m x 0.79m)

FIRST FLOOR

Landing

Bedroom 1: 12'6 x 9'4 (3.81m x 2.85m)

Bedroom 2: 14'1 x 9'9 (4.30m x 2.97m)

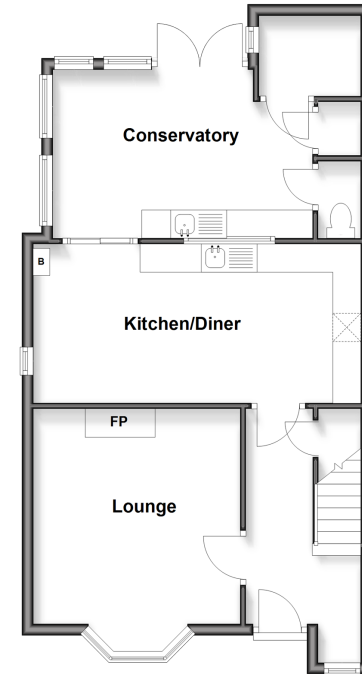
Bedroom 3: 9'1 x 7'9 (2.77m x 2.36m)

Bathroom: 6'4 x 5'4 (1.93m x 1.63m)

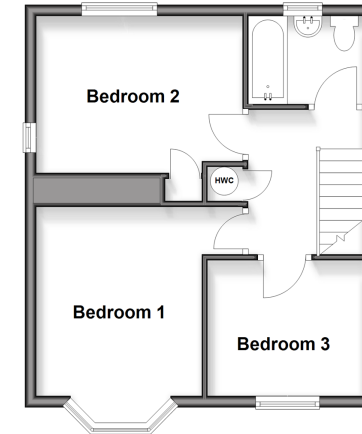
OUTSIDE

Front and Rear Garden

Ground Floor
Approx. 58.8 sq. metres (633.4 sq. feet)



First Floor
Approx. 39.6 sq. metres (426.3 sq. feet)



Call Rochester - 01634 830925 ■ wardsof Kent.co.uk

- Legal advice should be taken to verify fixtures/fittings, planning, alterations and/or lease details
- Appliances & services are untested, dimensions are approximate and floor plans are not to scale
- Through a Homewise Home For Life Plan people aged 60+ can secure this property for up to 59% less, by purchasing a Lifetime Lease



11530232/20260202/DG/AB