



Cranage
Northwich Road


IRLAMS
of Knutsford



The Property

This immaculately presented four-bedroom, two-bathroom bespoke detached property has been meticulously designed and executed by the current owner to now provide light, spacious and flexible living accommodation in a contemporary style. Particular mention must be made of the stunning, open plan Living Dining Kitchen with island unit, feature fireplace, full height windows and French doors to the garden, the master bedroom suite with fitted wardrobes an en-suite shower room as well as the large Living Room with bay window and galleried landing to the first floor.

Located in an ever-popular position in the heart of Cranage village, a short drive to Holmes Chapel and Knutsford town centres whilst being ideally positioned for all major network links to the Northwest and beyond.

The property is approached through electric gates over a sweeping golden gravel driveway, providing more than ample parking, leading to the front entrance and integral garage. The gardens are a lovely feature of the property, being generous in proportions with a private aspect. Laid to lawn in the main with a range of well stocked borders surrounding containing a wealth of different plants and foliage, all fully enclosed by mature hedging and timber fencing with established trees. Stone flagged patio area accessed off the main reception rooms provides ideal opportunity for alfresco dining and enjoying the lovely aspect.

Directions

From Knutsford town centre proceed along Toft Road (A50) for approx. 5.8 miles through Allstock. Turn left onto Northwich Road where the property will soon be seen.

SUMMARY OF ACCOMMODATION

- An immaculately presented, detached, bespoke property
- Located in an ever-popular position in the heart of Cranage village
- Substantial, flexible living accommodation
- Open plan living dining kitchen with integrated appliances & separate utility room
- Four generous bedrooms
- Two bathrooms (one en-suite)
- Stunning, private formal gardens with patios and lawned areas, ideal for alfresco dining and entertaining
- Private gated driveway & integral garage





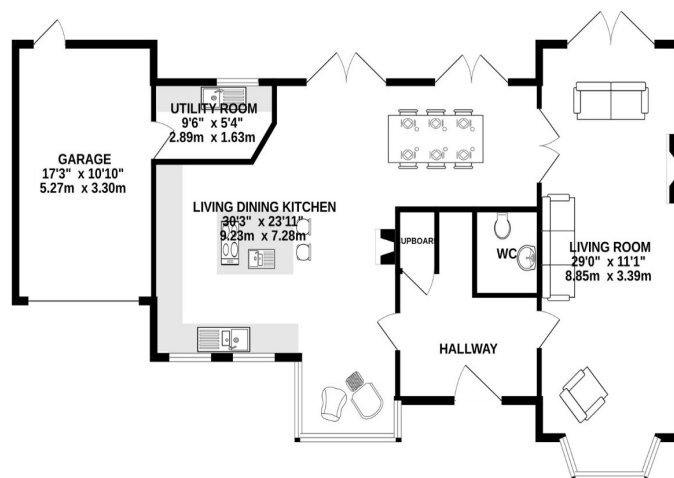


103 King Street, Knutsford,
Cheshire, WA16 6EQ
01565 654 000
E: info@irlamsestateagents.co.uk
www.irlamsestateagents.co.uk

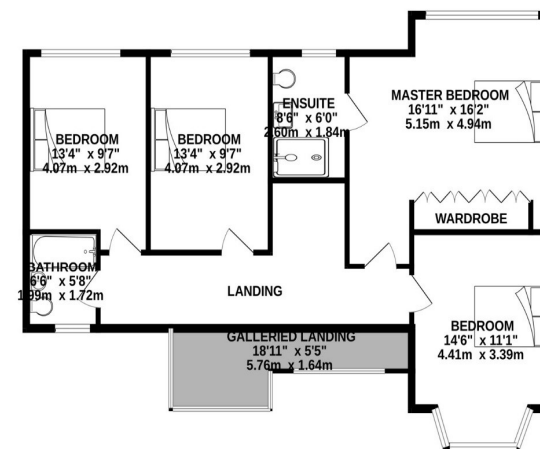


Guide Price – £1,325,000
Postcode – CW4 8HL
Tenure – Freehold
Local Authority - Cheshire East
Council Tax – Band G

GROUND FLOOR
1125 sq.ft. (104.6 sq.m.) approx.



1ST FLOOR
871 sq.ft. (80.9 sq.m.) approx.



TOTAL FLOOR AREA: 1997 sq.ft. (185.5 sq.m.) approx.

Whilst every attempt has been made to ensure the accuracy of the floorplan contained here, measurements of doors, windows, rooms and any other items are approximate and no responsibility is taken for any error, omission or mis-statement. This plan is for illustrative purposes only and should be used as such by any prospective purchaser. The services, systems and appliances shown have not been tested and no guarantee as to their operability or efficiency can be given.
Made with Metropix ©2026

Irlams (Estate Agents) Ltd for themselves and for the vendors or lessors of this property whose agents they are give notice that:

- The particulars are set out as a general outline only for the guidance of intending purchasers or lessees, and do not constitute, nor constitute part of, an offer or contract;
- All descriptions, dimensions, references to condition and necessary permissions for use and occupation, and other details are given in good faith and are believed to be correct but any intending purchasers or lessees should not rely on them as statements or representations of fact, but must satisfy themselves by inspection or otherwise as to the correctness of each of them;
- No person in the employment of Irlams (Estate Agents) Ltd has any authority to make or give any representation or warranty whatsoever in relation to this property.