



ONSLOW GARDENS, LONDON, LONDON, SW7

£1,225 Per Week

FEATURES

- A two bedroom lateral apartment
- Beautifully furnished
- Roof terrace with views over the mews
- Direct lift access
- Open plan kitchen/reception room
- 0.4 miles to South Kensington station



Maskells

This charming two-bedroom apartment on Onslow Gardens enjoys wonderful views over the communal garden square and is filled with natural light throughout.

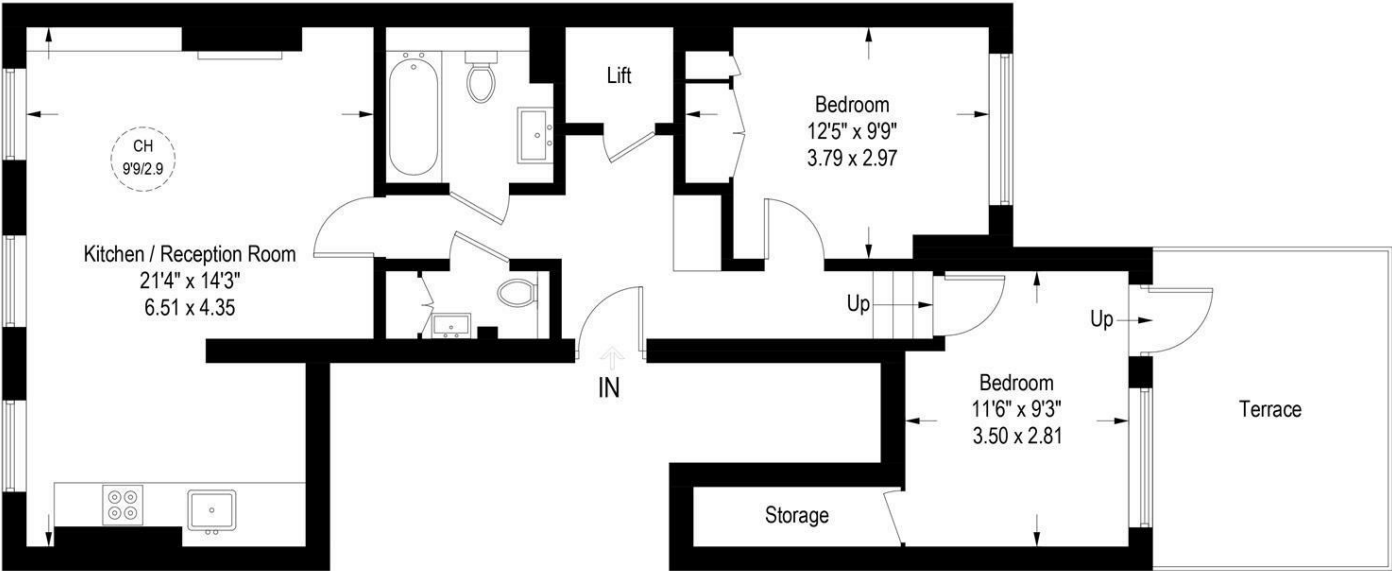
The property features a modern open-plan kitchen and reception room with high ceilings, three large sash windows, and an attractive fireplace, creating a bright and welcoming living space. The kitchen is fully integrated and thoughtfully designed for modern living.

The principal bedroom benefits from excellent built-in storage and comfortably accommodates a king-size bed. The second bedroom, positioned to the rear of the apartment, includes a double bed, ample storage, and a walk-in storage cupboard.

A generous private terrace provides an ideal space for entertaining, with pretty views over the local church and surrounding mews. The apartment also offers a well-proportioned family

Onslow Gardens, SW7

Approximate Gross Internal Area = 722 sq ft / 67.1 sq m



Second Floor

Illustration for identification purposes only, measurements are approximate, not to scale. (ID997089)

Call us on
0207 887 2532
lettingskcs@maskells.com
www.maskells.com

Council Tax Band
G

Energy Efficiency Rating		
	Current	Potential
Very energy efficient - lower running costs		
(92 plus) A		
(81-91) B		
(69-80) C		
(55-68) D		
(39-54) E		
(21-38) F		
(1-20) G		
Not energy efficient - higher running costs		
England & Wales		
EU Directive 2002/91/EC		

Agents Note: Whilst every care has been taken to prepare these particulars, they are for guidance purposes only. All measurements are approximate and are for general guidance purposes only and whilst every care has been taken to ensure their accuracy, they should not be relied upon and potential buyers are advised to recheck the measurements.

