



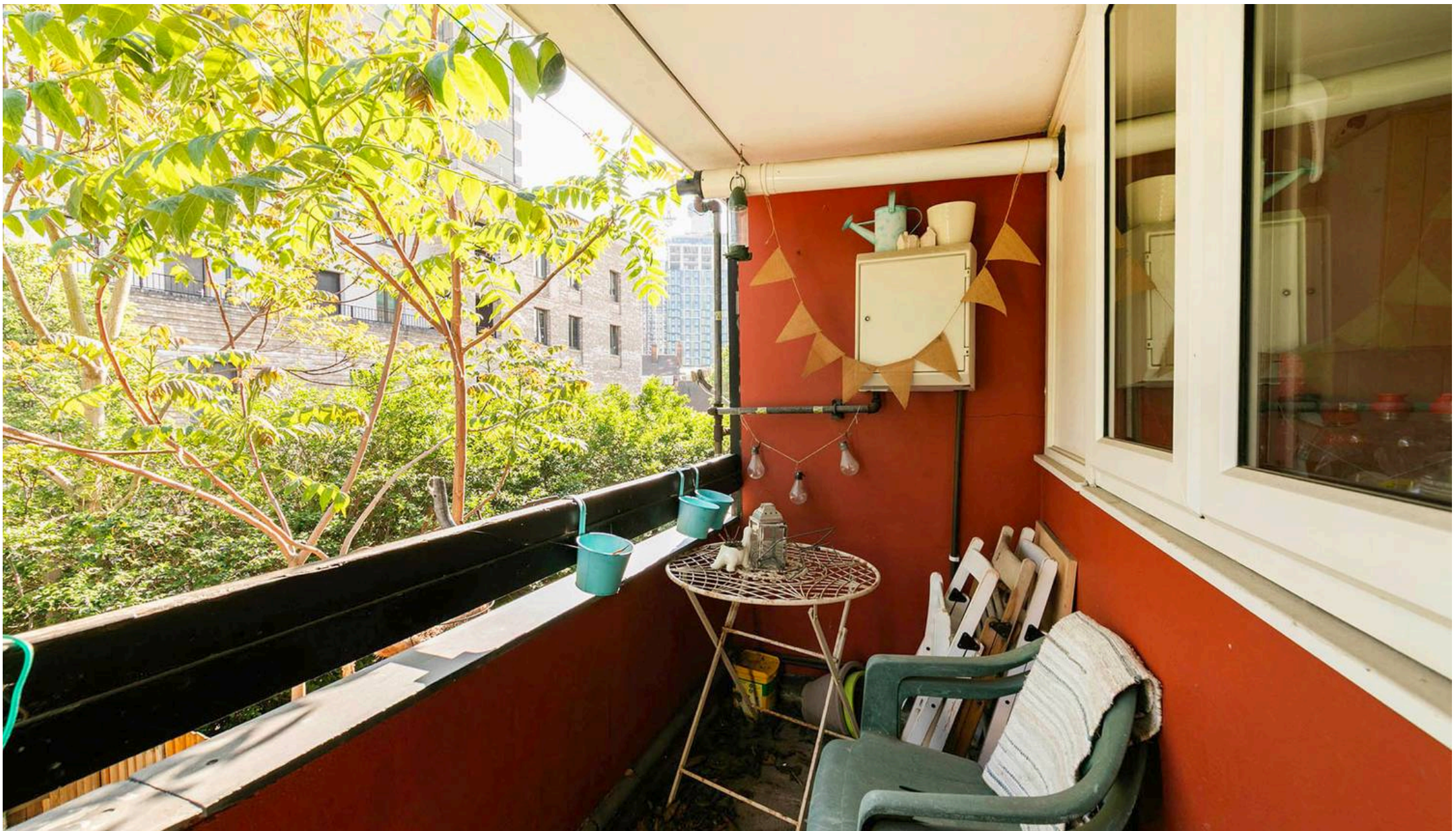
Shalfleet Drive, Ladbroke grove, W10.
£3,995 pcm

Shalfleet Drive, Ladbroke grove, W10.

Located on sought-after Shalfleet Drive, W10, this spacious and well-presented 4-bedroom property is available to rent from the end of August. The property comprises four large double bedrooms, a modern bathroom with a separate W.C., and comes fully furnished throughout, making it ideal for professional sharers or students. Further benefits include a private balcony, generous living space, and excellent natural light throughout. Ideally situated close to local amenities, transport links, and the vibrant areas of Notting Hill and Ladbroke Grove. Early viewing is highly recommended.







Black Katz

22 West Hampstead Mews, London - NW6 3BB

02073285000 • Thomas@blackkatz.com • blackkatz.com/