



Meridian Place

London, E14

Asking Price £550,000

A beautifully-presented dock-facing 2 bedroom 2 bathroom apartment in the exceptionally well-located Meridian Place development. The apartment has been recently refurbished throughout, & boasts direct dock views, & views towards Canary Wharf.

CHESTERTONS



Meridian Place

London, E14

- 930sq ft 1st floor 2 bedroom 2 bathroom apartment with balcony.
- Dual aspect with direct dock & Canary Wharf views.
- Excellent South Quay location.
- Share of Freehold.
- Allocated parking space; offered chain-free.



A pristine and spacious two bedroom two bathroom apartment which has been fully-refurbished throughout, & additionally benefits from a private balcony offering fabulous waterside views overlooking the South Dock in Canary Wharf. Meridian Place is situated moments away from South Quay DLR station and the many amenities of Canary Wharf and has private underground parking.

The property is sold chain free and offered with a Share of the Freehold.

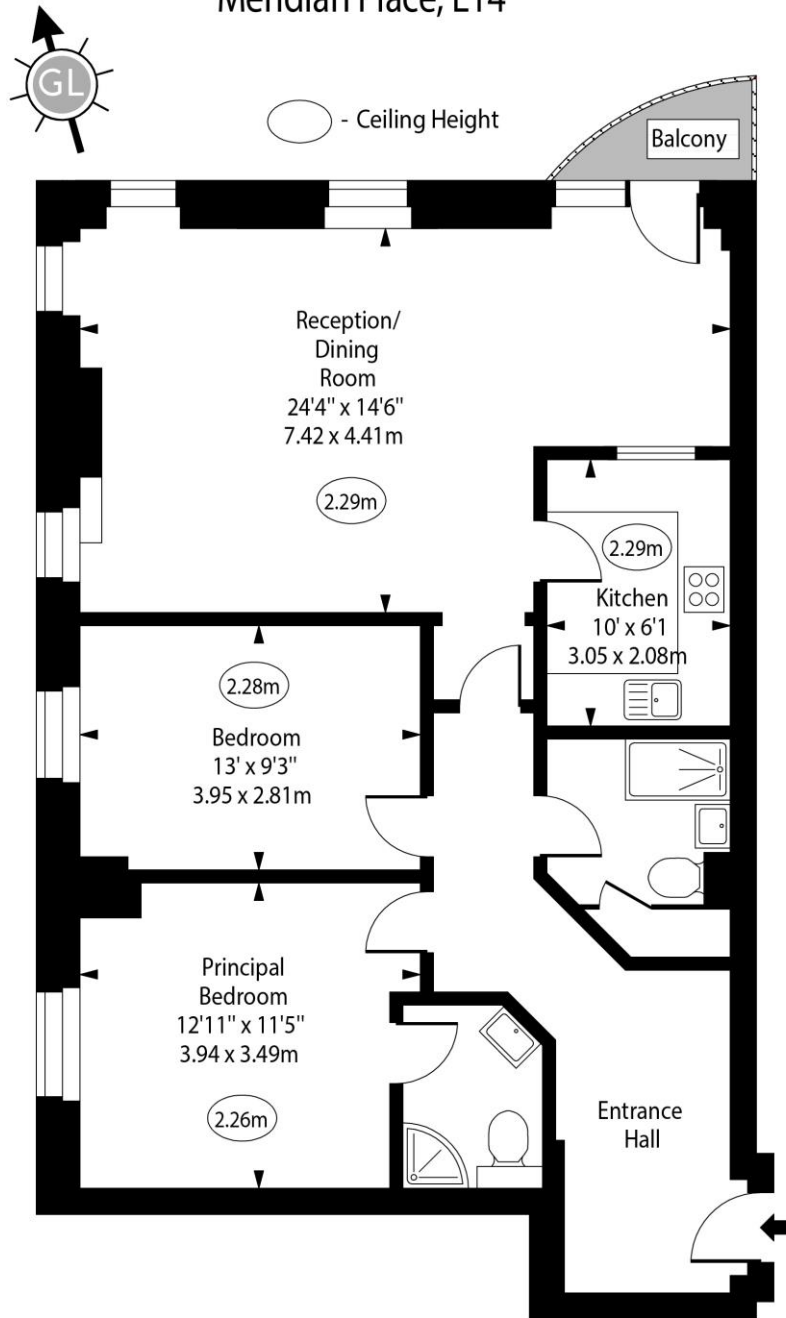
Tenure:	Leasehold w/Share of Freehold – 970 years remaining approx.
Service Charge:	£6,050pa approx.
Ground Rent:	nil
Local Authority:	Tower Hamlets
Council Tax Band:	F

Score	Energy rating	Current	Potential
92+	A		
81-91	B		
69-80	C		
55-68	D		
39-54	E		
21-38	F		
1-20	G		
		73 C	84 B

Chestertons Canary Wharf & Greenwich Sales

Harbour Island
28 Harbour Exchange Square
London
E14 9GE
canarywharf@chestertons.co.uk
020 7510 8300
chestertons.co.uk

Meridian Place, E14



First Floor

Approx Gross Internal Area

930 Sq Ft - 86.40 Sq M

Every attempt has been made to ensure the accuracy of the floor plan shown. However, all measurements, fixtures, fittings, and data shown are approximate interpretations and for illustrative purposes only. Measured according to the RICS. Not To Scale.

www.goldlens.co.uk

Ref. No. 029924J

