



COLEHILL LANE,  
London SW6





# COLEHILL LANE LONDON SW6

This charming four-bedroom mid-terrace house offers beautifully balanced living space over three floors, combining smart contemporary design with classic Victorian proportions.



4



2



1

EPC

C

Local Authority: Hammersmith and Fulham

Council Tax band: E

Tenure: Freehold

Guide price: **£1,370,000**





## EXPANSIVE OPEN-PLAN KITCHEN AND RECEPTION AREA

Upon entry, the residence reveals an expansive open-plan kitchen and reception area. This well-appointed and light space features sleek tiled flooring, a contemporary kitchen with integrated appliances, and three large skylights that flood the room with natural light. Floor-to-ceiling glass doors provide direct access to a low-maintenance, south-facing garden.

To the rear of the ground floor is a useful utility room and separate WC, tucked away for convenience without compromising the open feel of the ground floor.









## WELL-APPOINTED BEDROOMS

The first floor comprises three generously proportioned bedrooms and a modern family bathroom, accommodating a flexible layout conducive to family living.

The second floor is devoted entirely to an impressive principal suite, featuring vaulted ceilings, extensive built-in storage solutions, and an elegant en suite bathroom.

Clever use of the eaves space ensures practical storage capacity without compromising on aesthetic appeal.

The property further benefits from a professionally fitted security safe, a ready-to-be-reactivated house alarm, multi-zone underfloor heating on the ground floor and a smart lighting system for the light spots in the reception.







## LOCATION AND TRANSPORT LINKS

Colehill Lane is ideally located just off Munster Road in Fulham's sought-after 'Munster Village.' Turn right from the house, and you'll find yourself immersed in the vibrant atmosphere of Munster and Fulham Roads, with an array of excellent shops, bars, and restaurants to explore. Conversely, a left turn leads to the serene green spaces of Bishop's Park and the historic Fulham Palace, both situated alongside the scenic River Thames. For convenient transport links, Parsons Green Underground Station (District Line) provides access into Earls Court and the wider city.

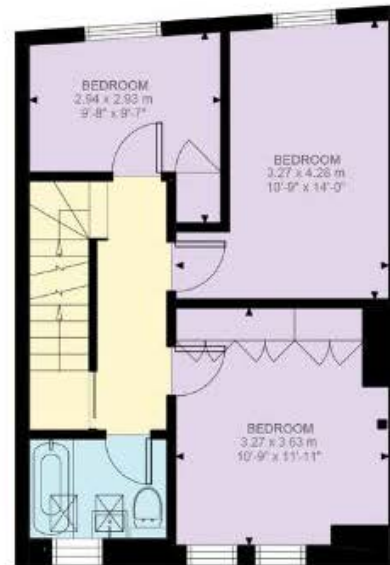




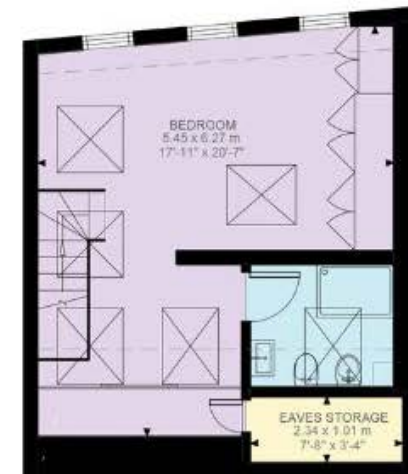




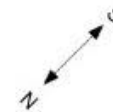
Ground Floor  
647 ft²



First Floor  
469 ft²



Second Floor  
384 ft²



(Including Eaves Storage)  
Approximate Gross Internal Area = 139.35 sq m / 1,500 sq ft

This plan is for layout guidance only. Not drawn to scale unless stated. Windows and door openings are approximate. Whilst every care is taken in the preparation of this plan, please check all dimensions, shapes and compass bearings before making any decisions reliant upon them. (ID767266)



**Sam Thornton**

+44 207 751 2403

samuel.thornton@knightfrank.com

**Knight Frank Fulham**

203 New Kings Road,

London SW6 4SR

**knightfrank.co.uk**

Your partners in property

---

1. Particulars: These particulars are not an offer or contract, nor part of one. You should not rely on statements given by Knight Frank in the particulars, by word of mouth or in writing ("information") as being factually accurate about the property, its condition or its value. Neither Knight Frank nor any joint agent has any authority to make any representations about the property, and accordingly any information given is entirely without responsibility on the part of Knight Frank. 2. Material Information: Please note that the material information is provided to Knight Frank by third parties and is provided here as a guide only. While Knight Frank has taken steps to verify this information, we advise you to confirm the details of any such material information prior to any offer being submitted. If we are informed of changes to this information by the seller or another third party, we will use reasonable endeavours to update this as soon as practical. 3. Photos, Videos etc: The photographs, property videos and virtual viewings etc. show only certain parts of the property as they appeared at the time they were taken. Areas, measurements and distances given are approximate only. 4. Regulations etc: Any reference to alterations to, or use of, any part of the property does not mean that any necessary planning, building regulations or other consent has been obtained. A buyer must find out by inspection or in other ways that these matters have been properly dealt with and that all information is correct. 5. Fixtures and fittings: A list of the fitted carpets, curtains, light fittings and other items fixed to the property which are included in the sale (or may be available by separate negotiation) will be provided by the Seller's Solicitors. 6. VAT: The VAT position relating to the property may change without notice. 7. To find out how we process Personal Data, please refer to our Group Privacy Statement and other notices at <https://www.knightfrank.com/legals/privacy-statement>.

Particulars dated July 2025. Photographs and videos dated July 2025. All information is correct at the time of going to print. Knight Frank is the trading name of Knight Frank LLP. Knight Frank LLP is a limited liability partnership registered in England and Wales with registered number OC305934. Our registered office is at 55 Baker Street, London W1U 8AN. We use the term 'partner' to refer to a member of Knight Frank LLP, or an employee or consultant. A list of members names of Knight Frank LLP may be inspected at our registered office. If you do not want us to contact you further about our services then please contact us by either calling 020 3544 0692, email to [marketing.help@knightfrank.com](mailto:marketing.help@knightfrank.com) or post to our UK Residential Marketing Manager at our registered office (above) providing your name and address.