



POLLARDS HILL NORTH, SW16

£1,350,000

- Four Bedroom
- Two Bathroom
- Gated
- Two Garages & Drive
- Extension Potential
- Energy Rating: D





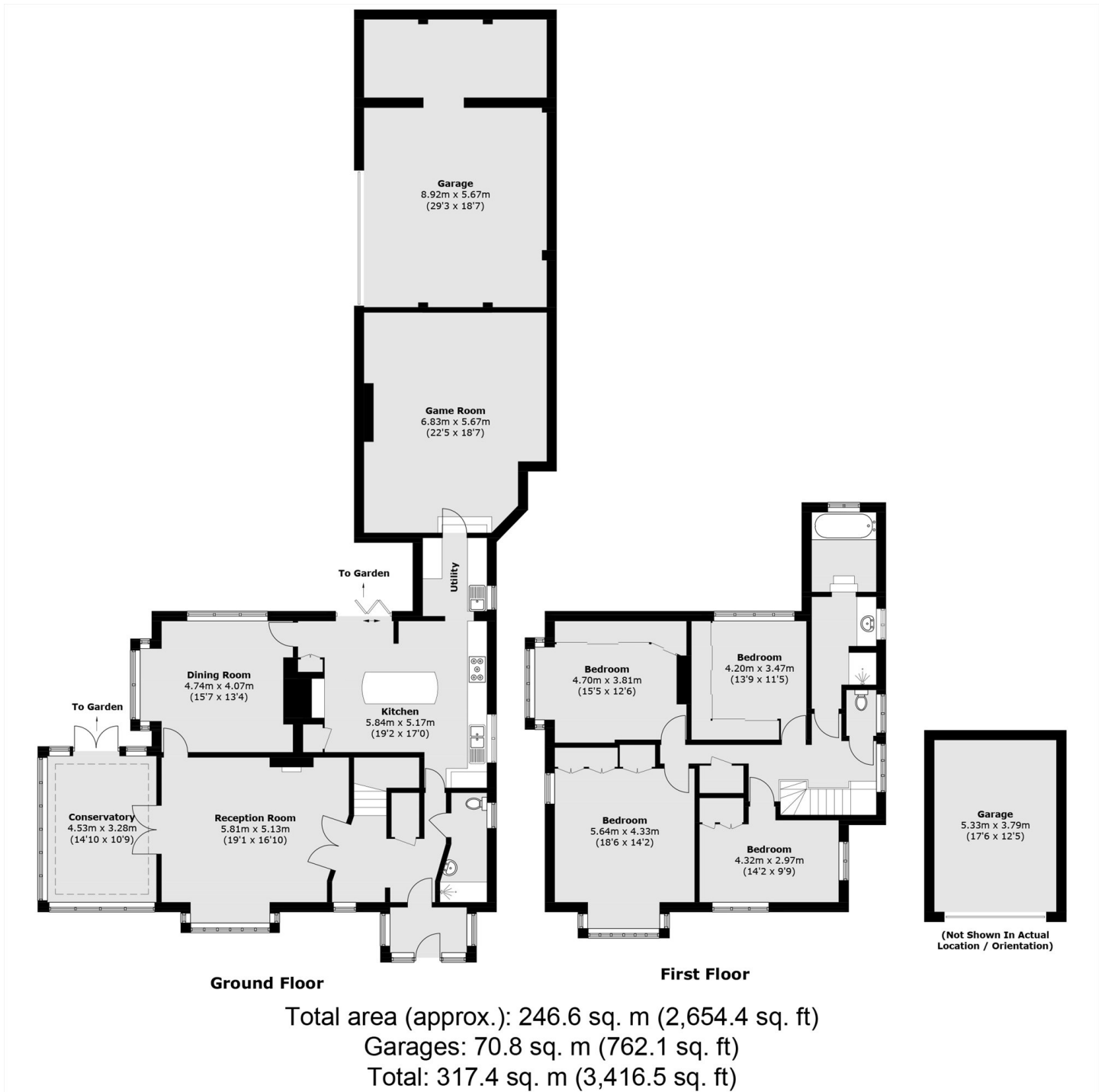
ABOUT THE HOME

A unique gated, substantial four bedroom detached property situated at the highest point of Pollards Hill offering sweeping panoramic views across south London. Measuring over 2500 square feet the property has an extensive garden and significant extension/development potential to create an idyllic one of a kind family home.

Pollards Hill North offers easy access to Norbury railway station providing transport links to London Bridge, London Victoria and Clapham Junction. Bus routes into the City and Brixton Underground station are also plentiful and a short-walk away. The restaurants, bars, pubs and amenities of London Road are a stone's throw away.







JACKSONS STREATHAM

1-3 De Montfort Parade,
 Streatham High Road,
 Sales: 020 8487 3179
 Lettings: 020 8487 3180

Energy Rating: D We aim to make our particulars both accurate and reliable. However they are not guaranteed; nor do they form part of an offer or contract. If you require clarification on any points then please contact us, especially if you're traveling some distance to view. Please note that appliances and heating systems have not been tested and therefore no warranties can be given as to their good working order.