



Windrush Court, 67 St. Marys Mead
Witney

Guide Price £95,000

Windrush Court, Witney

This retirement apartment internally makes best use of space and benefits from double glazing and electric heating. Beginning with an entrance hall, there is an effortless flow to the living arrangement which comprises a spacious lounge and double bedroom together with a shower room and kitchen. The bedroom has build-in sliding double door wardrobe. Externally, there are communal gardens which are maintained under the supervision of a management Company along with other communal areas including a residents lounge.

Council Tax band: C

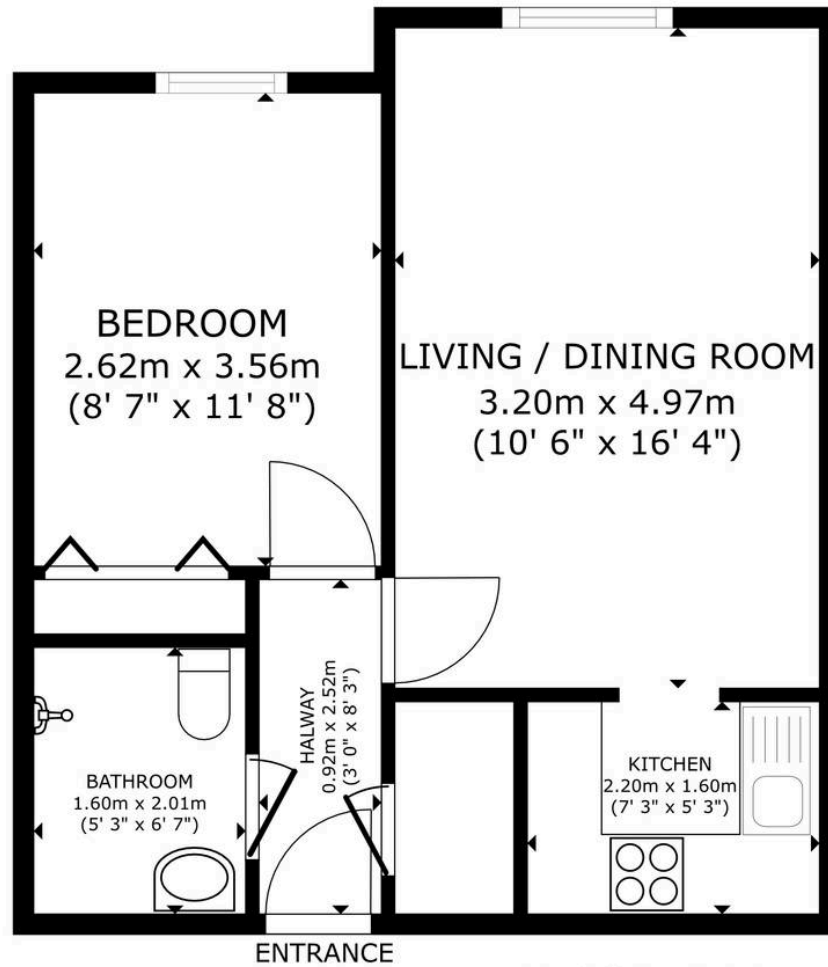
Tenure: Leasehold

EPC Energy Efficiency Rating: B

EPC Environmental Impact Rating:







FLOOR PLAN

GROSS INTERNAL AREA
 FLOOR PLAN 38.2 m² (411 sq.ft.)
 TOTAL : 38.2 m² (411 sq.ft.)
 SIZES AND DIMENSIONS ARE APPROXIMATE, ACTUAL MAY VARY.

Martyn Cox & Company

6-8 Corn Street, Witney - OX28 6BL

01993 779020 • property@martyncox.com • www.martyncox.com



These particulars are approximate and for illustrative purposes only. They have been prepared in good faith and not intended to be part of an offer or contract. We have not carried out a structural survey and the services, appliances and fittings have not been tested. photos, measurements, floor plans, distances, lease details, services charges and ground rent are given as a guide only.