

ROYSTON & LUND



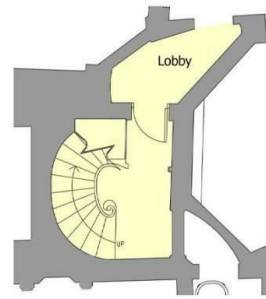
Apartment 5 Kilwardby House, Kilwardby Street, Ashby De La Zouch

Price Guide £318,500

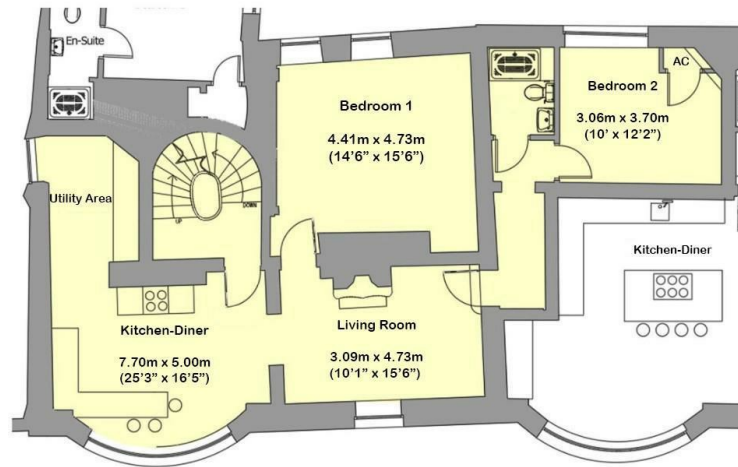
- GUIDE PRICE £318,500-£325,000
- Living Area with Original Fireplace
- Communal Patio Area and Personal Parking Space
- Annual Management Charge to be Confirmed
- Grade II Listed Two Bedroom First Floor Apartment
- Shower Room
- 999 Year Lease
- Large Modern Open Plan Kitchen/Dining Area
- Access to the Apartment via an Original Spiral Staircase
- EPC B/Council Tax to be Confirmed

4 Bath Street, Corner, LE65 2FH
01530 443 443

ashbysales@royston-lund.co.uk
<https://www.royston-lund.co.uk/>



Ground Floor Plan



Directions

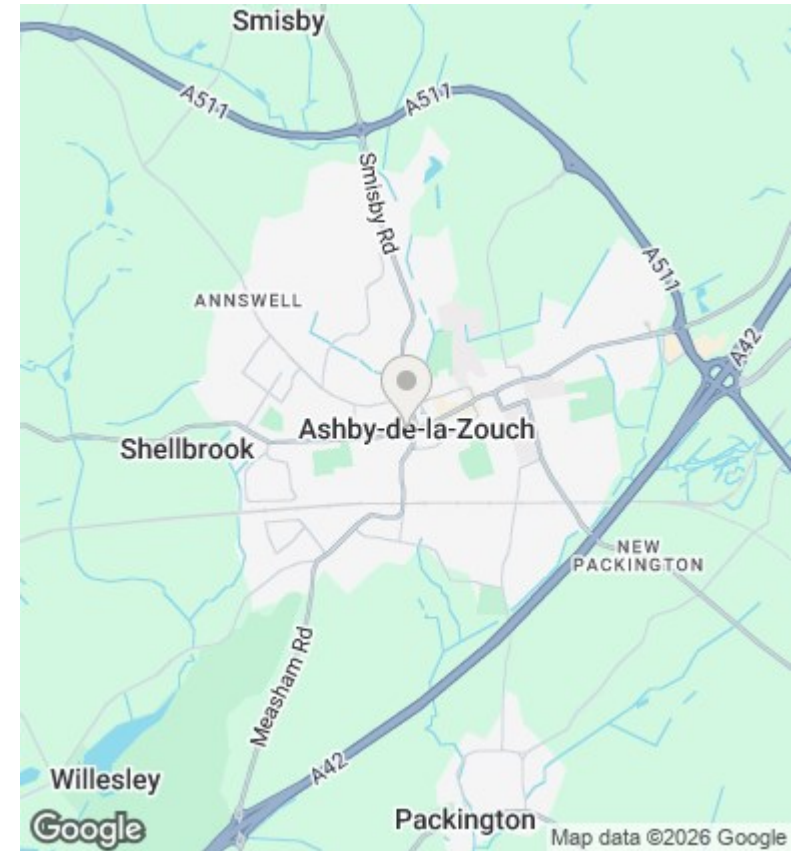
Viewings

Viewings by arrangement only. Call 01530 443 443 to make an appointment.

Council Tax Band

EPC Rating:

B



Energy Efficiency Rating		Current	Potential
<i>Very energy efficient - lower running costs</i>			
(92 plus) A			
(81-91) B		81	81
(69-80) C			
(55-68) D			
(39-54) E			
(21-38) F			
(1-20) G			
<i>Not energy efficient - higher running costs</i>			
England & Wales		EU Directive 2002/91/EC	