




**Bitterne**  
**023 8042 2600**



**113 Yeovil Chase, Southampton, Hampshire,  
SO18 5NZ**

**£250,000 Freehold**

**Draft Details Awaiting Vendor Approval**

Welcome to Yeovil Chase! Set within the heart of SO18 is this gorgeous TWO-DOUBLE-BEDROOM end of terrace house. Sold with NO CHAIN, this property would be the perfect starter home. Take a look inside, stepping into an entrance porch leading on into the main hallway, which gives an instant feeling of home. To the front aspect is a stylish "high gloss" fitted kitchen with a fitted breakfast bar, utility space and integral slimline dishwasher and oven are all included. Sweeping the full width of the rear is a NINE-TEEN-FOOT, DOUBLE ASPECT lounge diner with a "work-station" which is ideal for anyone working from home. Upstairs continues to impress with two spacious bedrooms and a clinical white bathroom suite. The garden is the true selling point of this home. Meticulously landscaped, this SOUTH FACING haven is the place to be in the summer months and, in our opinion, it would be a great space for entertaining.

# 113 Yeovil Chase, Southampton, Hampshire, SO18 5NZ

## £250,000 Freehold

Welcome to Yeovil Chase! Set within the heart of SO18 is this gorgeous TWO-DOUBLE-BEDROOM end of terrace house. Sold with NO CHAIN, this property would be the perfect starter home. Take a look inside, stepping into an entrance porch leading on into the main hallway, which gives an instant feeling of home. To the front aspect is a stylish "high gloss" fitted kitchen with a fitted breakfast bar, utility space and integral slimline dishwasher and oven are all included. Sweeping the full width of the rear is a NINE-TEEN-FOOT, DOUBLE ASPECT lounge diner with a "work-station" which is ideal for anyone working from home. Upstairs continues to impress with two spacious bedrooms and a clinical white bathroom suite. The garden is the true selling point of this home. Meticulously landscaped, this SOUTH FACING haven is the place to be in the summer months and, in our opinion, it would be a great space for entertaining.

Further benefits include rear access, gas central heating, UPVC double-glazed windows and fitted storage.

### Entrance Hall:

Textured and covered ceiling, stairs rising to first floor with storage under, radiator.

### Lounge/Diner

11' 5" (3.48m) x 19' 9" (6.02m)::

Textured and covered ceiling, window to rear and side, sliding patio doors to rear opening onto garden, work surface space.

### Kitchen

8' 11" (2.72m) x 13' 4" (4.06m)::

Smooth ceiling, double glazed window front, a range of high gloss wall, base and drawer units with work surface over, sink and drainer inset, integrated four-ring induction hob, integrated slimline dishwasher and oven, breakfast bar.

### Bedroom One

11' 8" (3.56m) x 9' 11" (3.02m)::

Smooth and covered ceiling, double glazed window to rear, fitted wardrobes, radiator.

### Bedroom Two

15' 2" (4.62m) x 9' 6" (2.90m)::

Smooth and covered ceiling, dual aspect UPVC double glazed window to front and side, radiator.

### Bathroom :

Smooth and covered ceiling, UPVC double glazed window to front, three-piece suite comprising: panel enclosed bath with mains fed shower over, WC and wash hand basin, tiled walls, heated ladder towel rail.

### Garden:

Fence enclosed south facing rear garden, decking to patio seating area and artificial lawn, brick-built shed, rear access.

### Services

Mains gas, water, electricity, and drainage are connected. For mobile and broadband connectivity, please refer to Ofcom.org.uk. Please note that none of the services or appliances have been tested by Field Palmer.

### Council Tax Band

Band B

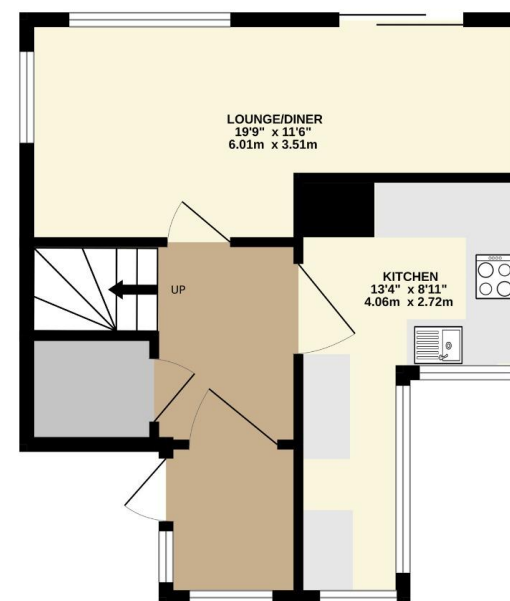
### Sellers Position

Buying On

### Offer Check Procedure

If you are considering making an offer for this property and require a mortgage, our clients will require confirmation of your status. We have therefore adopted an Offer Check Procedure which involves our Financial Advisor verifying your position.

GROUND FLOOR



1ST FLOOR



Whilst every attempt has been made to ensure the accuracy of the floorplan contained here, measurements of doors, windows, rooms and any other items are approximate and no responsibility is taken for any error, omission or mis-statement. This plan is for illustrative purposes only and should be used as such by any prospective purchaser. The services, systems and appliances shown have not been tested and no guarantee as to their operability or efficiency can be given.  
Made with Metropix ©2025

#### Bitterne

249 Peartree Avenue  
Bitterne  
SO19 7RD

023 8042 2600

#### Shirley

391 Shirley Road  
Shirley  
SO15 3JD

023 8078 0787

#### Woolston

24 Portsmouth Road  
Woolston  
SO19 9AB

023 8039 3255

#### Auction Department

62 High Street  
West End  
SO30 3DT

023 8047 4274

#### Lettings & Block Management

2-4 New Road  
Southampton  
SO14 0AA

023 8071 0402

#### Do you need an Energy Performance Certificate?

Field Palmer are able to offer EPC services across Hampshire and the south of England.

#### We can offer mortgage advice

Want to get the best mortgage, but don't know which one is right for you? We can advise you on discounted, fixed rate, tracker, offset, buy to let, non status, re-mortgage and more.

**fieldpalmer**  
ESTATE AGENTS