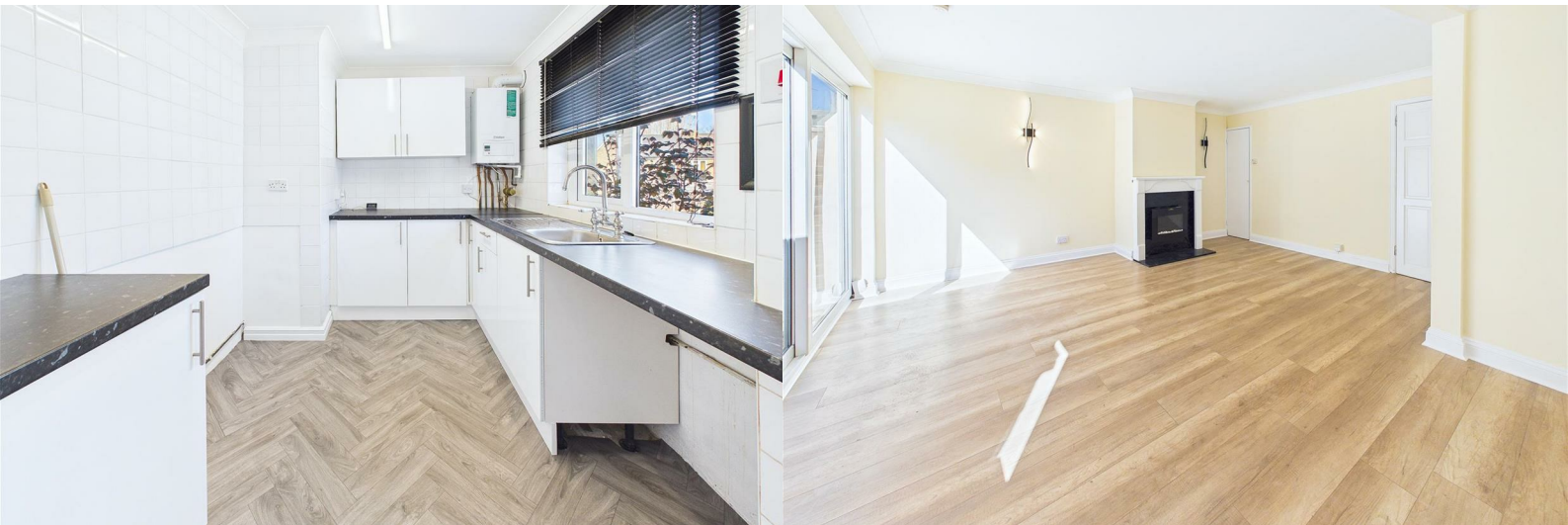




97 Great Mistley

, Basildon, SS16 4AZ

Asking price £310,000



97 Great Mistley

, Basildon, SS16 4AZ

Asking price £310,000



Entrance/Kitchen

15'7 x 8' (4.75m x 2.44m)

Entrance door, window to front. Range of fitted storage cupboards with space and plumbing for washing machine, fridge/freezer and oven. Wall mounted boiler, part tiled walls.

Living Room

15'9 x 15'6 (4.80m x 4.72m)

Patio doors to rear, feature fireplace, storage cupboard, radiator.

First Floor

Landing

7'6 x 3'10 (2.29m x 1.17m)

Stairs to ground floor, access to loft.

Bedroom One

14' x 8'9 (4.27m x 2.67m)

Window to rear, radiator.

Bedroom Two

10'11 x 6'8 (3.33m x 2.03m)

Window to front, radiator.

Bedroom Three

8'6 x 7'11 (2.59m x 2.41m)

Window to rear, radiator.

Bathroom

6'7 x 4'11 (2.01m x 1.50m)

Window to front, panelled bath with shower over, pedestal wash hand basin, low level WC. Radiator.

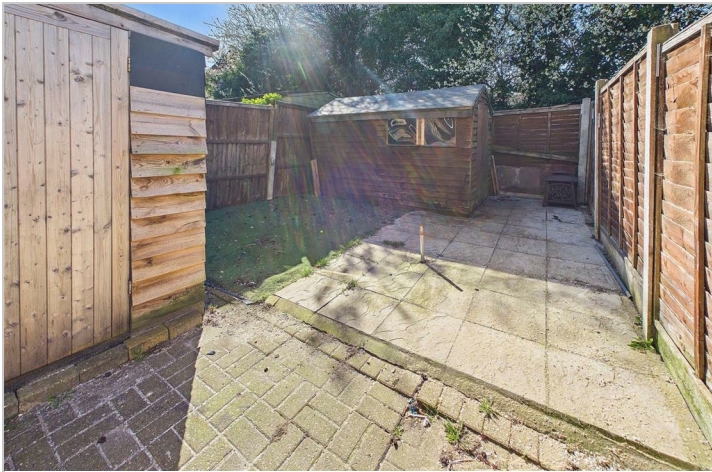
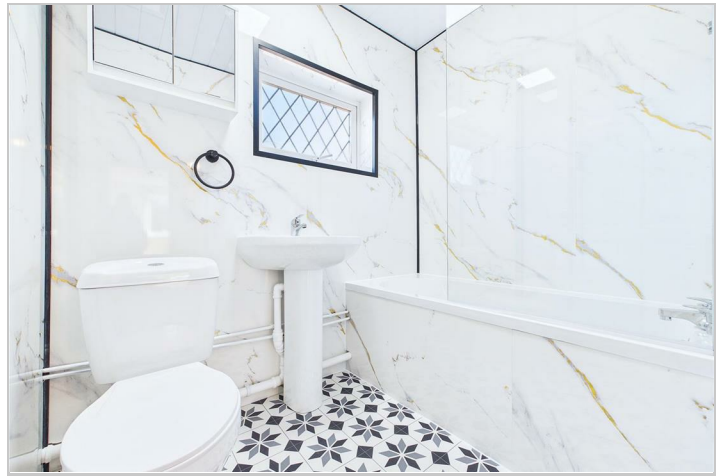
Exterior

Frontage

Hardstanding.

Rear Garden

Paved patio area, timber shed.



Road Map



Hybrid Map



Terrain Map



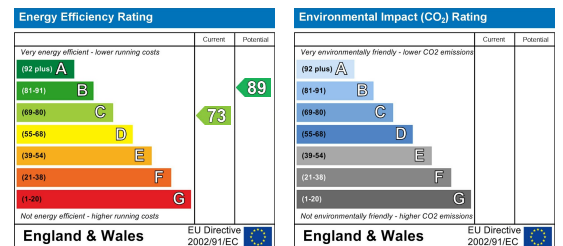
Floor Plan



Viewing

Please contact our Chelmsford Office on 01245 330764 if you wish to arrange a viewing appointment for this property or require further information.

Energy Efficiency Graph



These particulars, whilst believed to be accurate are set out as a general outline only for guidance and do not constitute any part of an offer or contract. Intending purchasers should not rely on them as statements of representation of fact, but must satisfy themselves by inspection or otherwise as to their accuracy. No person in this firm's employment has the authority to make or give any representation or warranty in respect of the property.