



Seymour Street, W1H

£3,640 Per calendar month

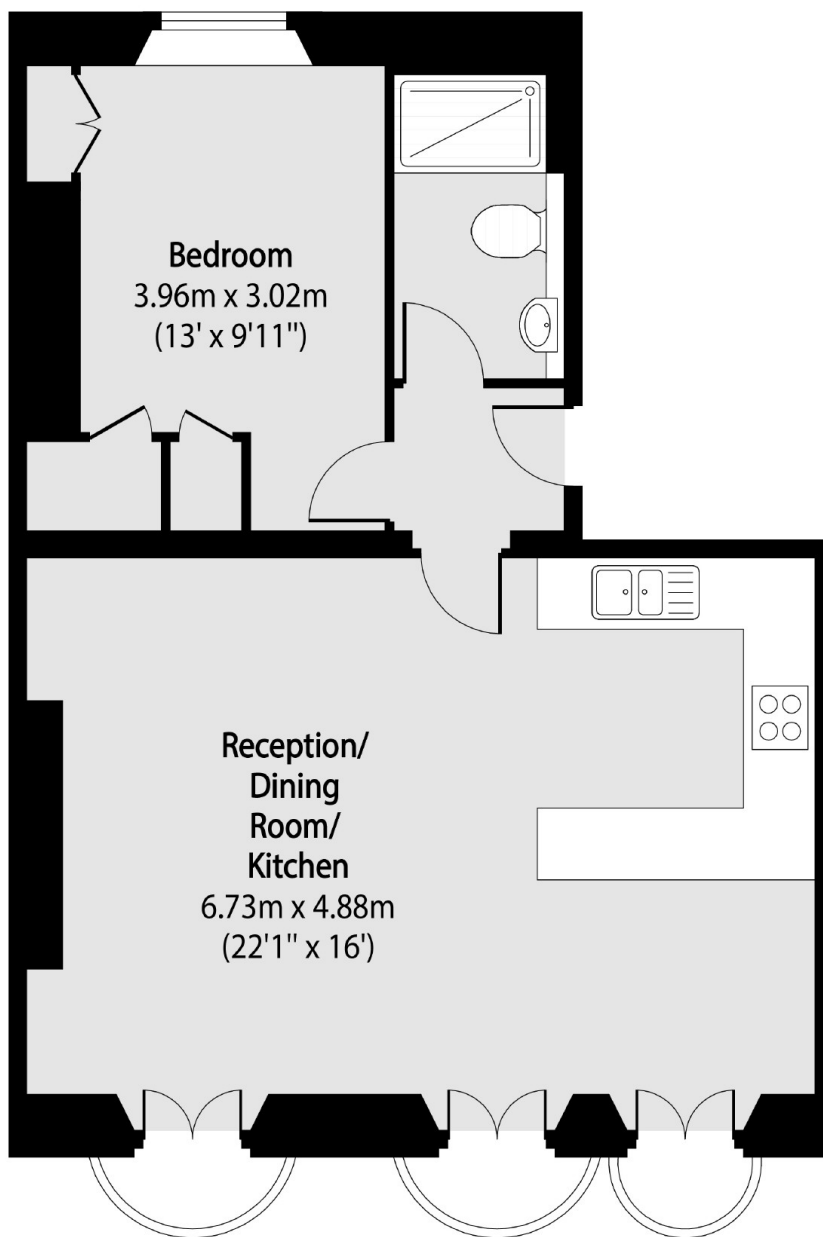
A well-presented one bedroom apartment on the first floor of this attractive building close to Portman Village. The property has an open-plan kitchen/reception room with high ceilings, a double bedroom and shower room.

Seymour Street sits on the edge of Portman Village which is a favourite for locals, providing a village vibe in the heart of central London. The shops, bars and restaurants of Marylebone High Street are also within easy reach. There are numerous transport links from Marble Arch, Bond Street, Edgware Road and Baker Street stations. The open spaces of Hyde Park are close by.

Features

- First Floor Flat
- One Bedroom
- Shower Room
- High Ceilings
- Unfurnished
- The Portman Estate

Seymour Street, London, W1H



Total area (approx): 50.63 sq m (545 sq. ft)