



# 27 Mountbatten Close

Stretton, Burton-On-Trent, DE13 0FD

## £180,000

A well-presented and deceptively spacious two-bedroom semi-detached home, ideally positioned within the ever-popular area of Stretton. Set back from the road with an abundance of off-road parking to the front, the property offers practical and well-balanced accommodation throughout and is offered to the market with no onward chain, making it an excellent opportunity for first-time buyers, downsizers, or investors alike.

Internally, the home is well maintained and immediately welcoming. The accommodation opens into a spacious living room, which provides a comfortable and light-filled main reception space, with stairs rising to the first floor. To the rear sits a modern, well-appointed kitchen, offering a practical layout and plenty of storage, perfectly suited to everyday living.

Upstairs, the property continues to impress with a generous principal bedroom, a further good-sized second bedroom, and a family bathroom, all presented in good condition and ready for immediate occupation.

Externally, the home enjoys a fully landscaped rear garden, thoughtfully designed to be low maintenance while still providing an attractive and versatile outdoor space. The garden also

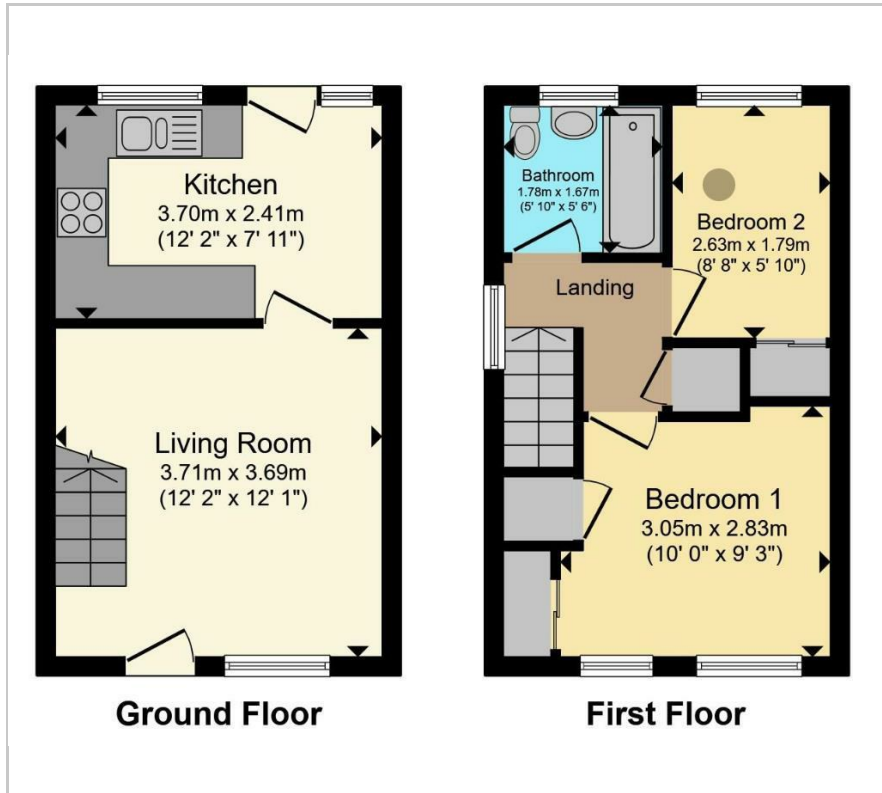


### Viewing

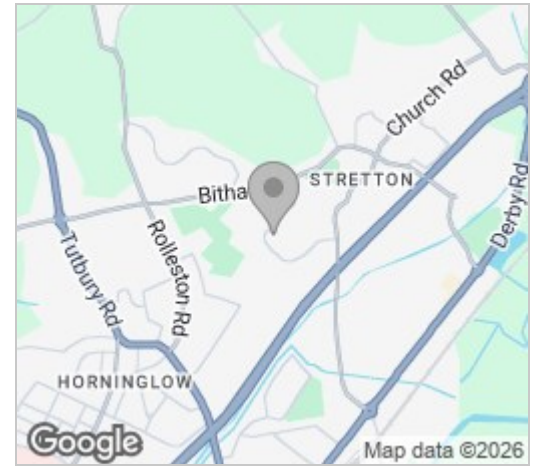
Please contact our Berkley Kibworth Office on 0116 2796161 if you wish to arrange a viewing appointment for this property or require further information.

 2  1  1 

## Floor Plan



## Area Map



## Energy Efficiency Graph



These particulars, whilst believed to be accurate are set out as a general outline only for guidance and do not constitute any part of an offer or contract. Intending purchasers should not rely on them as statements of representation of fact, but must satisfy themselves by inspection or otherwise as to their accuracy. No person in this firm's employment has the authority to make or give any representation or warranty in respect of the property.