



## Mora Road, NW2

£550,000

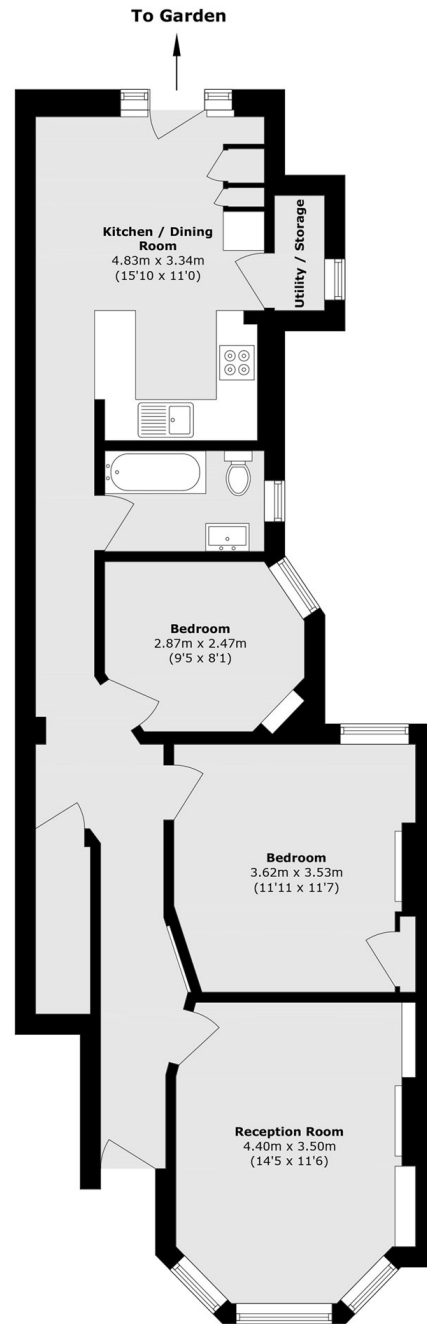
A charming two bedroom ground floor garden flat that is presented in ready to move condition. It features a reception room, kitchen and dining area, a utility store, and a private garden. The property is share of freehold, with no service charge or ground rent fees, including a private entrance.

Mora Road is conveniently located for local amenities, the ever popular Gladstone Park (0.2 miles from the property), and local transport links. Willesden Green Underground Station (Jubilee Line, Zone 2) and Cricklewood Station (Thameslink) are within one mile of the property..

### Features

- Ground Floor Garden Flat
- Two Bedrooms
- Reception Room
- Kitchen & Dining Area
- Utility Store
- Share Of Freehold

# Mora Road, London, NW2



Total area (approx.): 71.7 sq. m (771.7 sq. ft)