



Pinkmove

## Batchelor Road

£225,000

- Three Bedroom End of Terrace House
- Two Reception Rooms
- Enclosed Rear Patio Garden
- Modern Kitchen With Skylight
- Excellent Transport Links to Newport Town Centre and M4
- Close to Local Schools, Shops and Amenities
- EPC Rating: D



Pinkmove



Pinkmove

01633 746088  
team@pinkmove.co.uk



## About the property

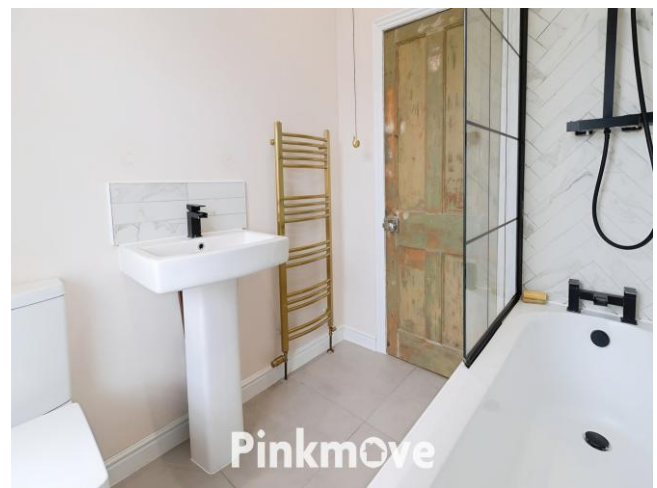
A spacious and well-presented three-bedroom end of terrace home, located on Batchelor Street in the popular Beechwood area of Newport.

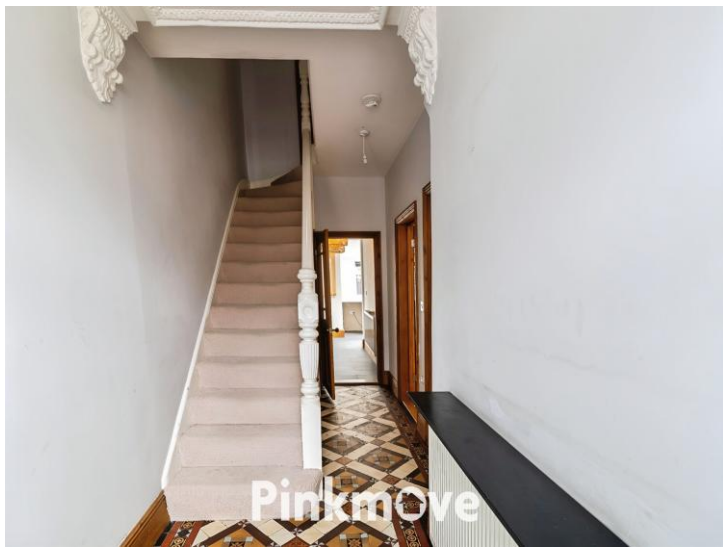
The property opens into an entrance hall, leading to a front reception room featuring a bay window that adds character and charm. Towards the centre of the home, a second reception room flows into a modern kitchen, complete with skylights that bring in natural light. The kitchen opens out to a low-maintenance rear garden, which combines patio space with artificial grass—ideal for relaxing or entertaining.

Upstairs, the home offers two double bedrooms and a single bedroom, along with a well-appointed family bathroom.

Batchelor Street is well placed for access to local amenities, including schools such as Eveswell Primary and St Julian's, as well as shops, parks, and public transport links. Newport city centre and the M4 are both within easy reach, making this a convenient location for commuters.

This property is a great opportunity for first-time buyers, families, or investors looking for a home in a well-connected and established part of Newport.





## Accommodation

### Living Room

13' 6" x 11' 8" ( 4.11m x 3.56m )  
Max Measurements

### Dining Room

14' 3" x 10' 8" ( 4.34m x 3.25m )  
Max Measurements

### Kitchen

Irregular Shaped Room 8' 4" x 12' 5" ( 2.54m x 3.78m)

### Bathroom

7' x 6' ( 2.13m x 1.83m )

### Bedroom 1

14' 1" x 10' 8" ( 4.29m x 3.25m )  
Max Measurements

### Bedroom 2

13' 10" x 9' 8" ( 4.22m x 2.95m )  
Max Measurements

### Bedroom 3

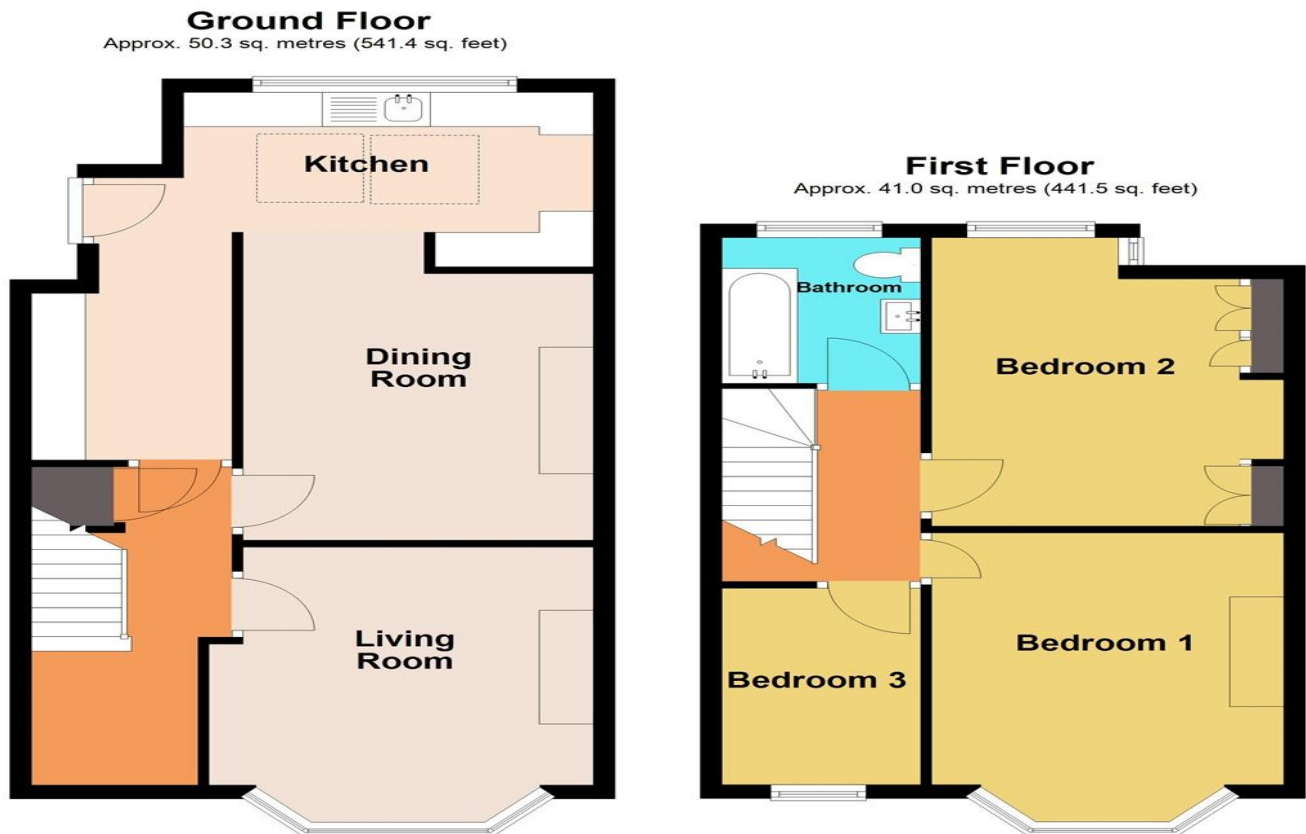
9' 5" x 5' 11" ( 2.87m x 1.80m )

01633 746088

team@pinkmove.co.uk

**Pinkmove**

## Floorplan



Total area: approx. 91.3 sq. metres (982.9 sq. feet)  
**20 Batchelor Road**

## Important Information

Note while we endeavour to make our sales details accurate and reliable, if there is any point which is of particular interest to you, please contact the office and we will be pleased to confirm the position for you. We have not personally tested any apparatus, equipment, fixtures, fittings or services and cannot verify they are in working order or fit for their purposes. Nothing in these particulars is intended to indicate that carpets or curtains, furnishings or fittings, electrical goods (whether wired or not). Gas fires or light fittings or any other fixtures not expressly included form part of the property offered for sale. This computer generated Floorplan, if applicable, is intended as a general guide to the layout and design of the property. It is not to scale and should not be relied upon for dimensions. Tenure: We cannot confirm the tenure of the property as we have not had access to the legal documents. The buyer is advised to obtain verification from their solicitor or surveyor.

Peter Alan Limited is registered in England and Wales under company number 2073153, Registered Office is Cumbria House, 16-20 Hockliffe Street, Leighton Buzzard, Bedfordshire, LU7 1GN. VAT Registration Number is 500 2481 05. For activities relating to regulated mortgages and non-investment insurance contracts, Peter Alan Limited is an appointed representative of Connells Limited which is authorised and regulated by the Financial Conduct Authority. Connells Limited's Financial Services Register number is 302221. Most buy-to-let

