



## SHOOTERS HILL ROAD, SE3

£860,000

Terraced House  
Three Bedrooms  
Utility Room  
Driveway  
Garden  
Energy rating: d

@marshandparsons  
marshandparsons.co.uk

MARSH &  
PARSONS



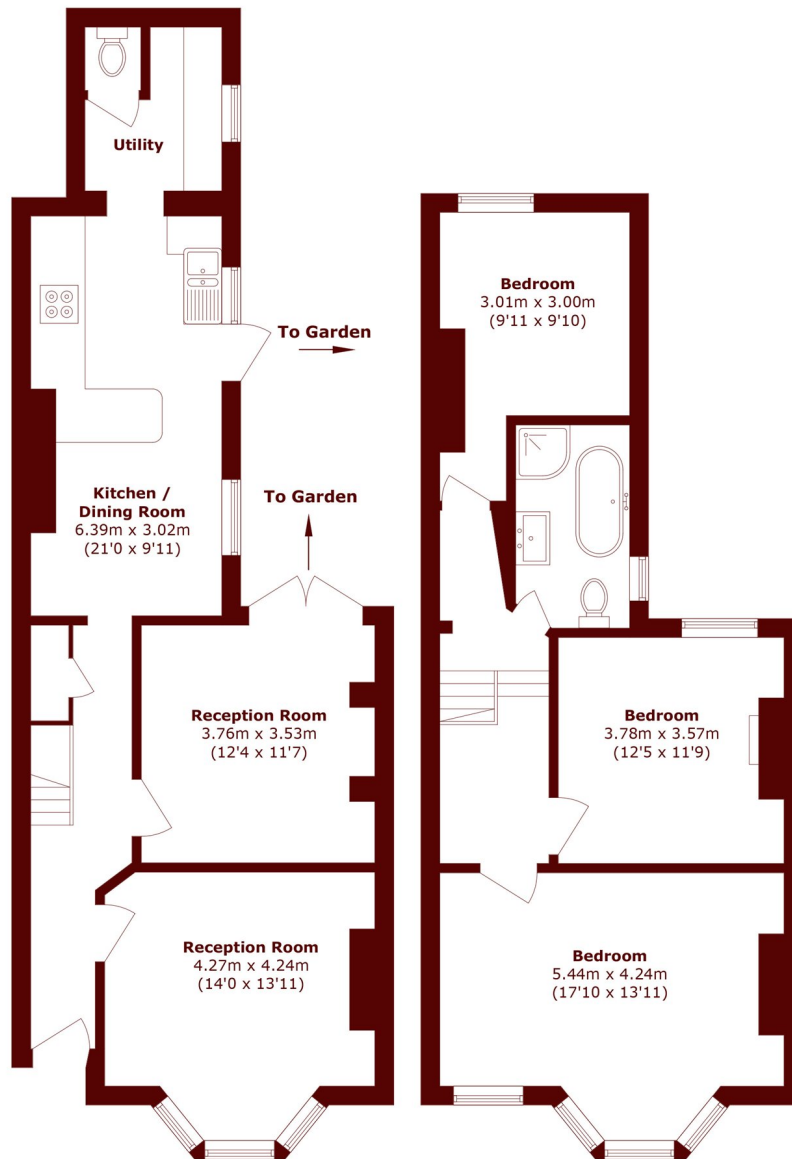
# ABOUT THE PROPERTY

Renovated throughout, this three bedroom Victorian terrace in a sought-after SE3 location offers two reception rooms and a spacious open-plan kitchen/living area with utility room, WC, and private garden. Upstairs features three bedrooms and a large four piece bathroom. With a new boiler, double glazing, and brand new appliances, it's a true turn-key home.

Set on a sought-after road near Blackheath Royal Standard's shops and cafés, within catchment for top schools including Leigh Academy Blackheath. Westcombe Park station and buses to North Greenwich (Jubilee line) are nearby.



# STEP INSIDE SHOOTERS HILL ROAD



Total area (approx.): 126.6 sq. m (1362.7 sq. ft)

Charlton  
020 8293 0454

Energy Rating: We aim to make our particulars both accurate and reliable. However, they are not guaranteed; nor do they form part of an offer or contract. If you require clarification on any points then please contact us, especially if you're traveling some distance to view. Please note that appliances and heating systems have not been tested and therefore no warranties can be given as to their good working order

MARSH &  
PARSONS