

# SNELLERS

ESTATE AGENTS



## Cypress Avenue, TW2

£3,950 PCM

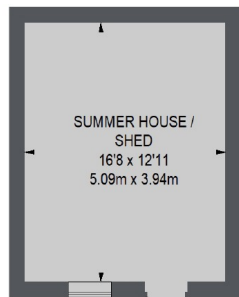
A beautiful family home arranged over three floors with ample living space, five bedrooms, three bathrooms and a private garden with a summer house.

Cypress Avenue is a popular residential street close to all the amenities of Whitton high street. Whitton station is also within walking distance.

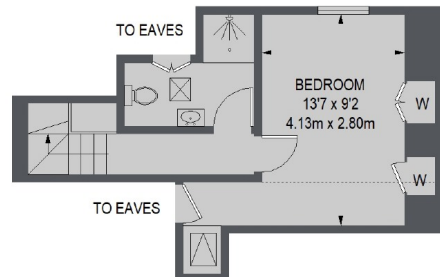
- Beautiful Family Home • Four/Five Bedrooms • Three Bathrooms •
- Large Eat-in-Kitchen • Pretty Garden • Central Location •

# SNELLERS

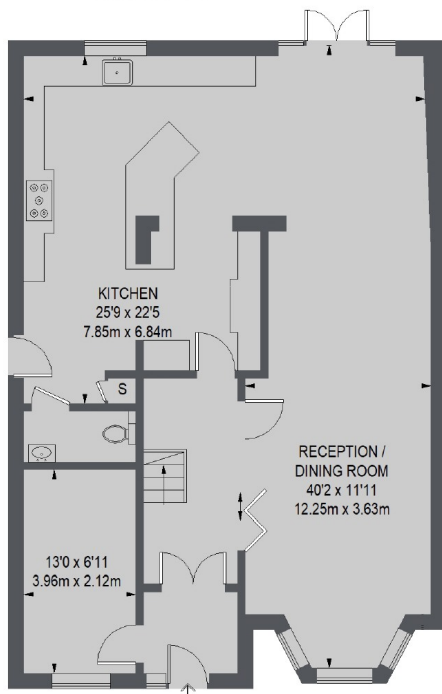
ESTATE AGENTS



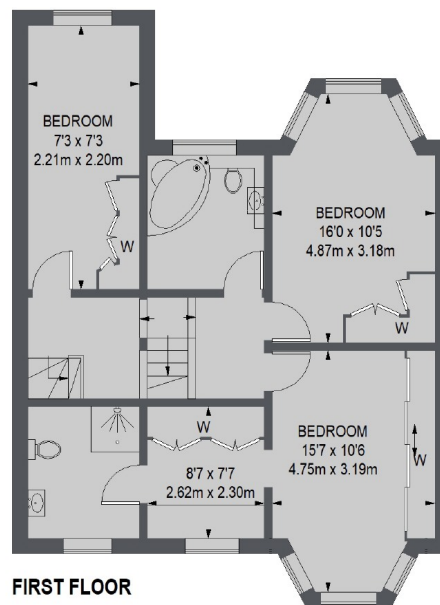
(NOT SHOWN IN ACTUAL  
LOCATION / ORIENTATION)  
**OUTBUILDING**



**SECOND FLOOR**



**GROUND FLOOR**



**FIRST FLOOR**

= REDUCED HEADROOM  
BELOW 1.5 M / 5'0"

TOTAL APPROX. FLOOR AREA  
(EXCLUDING EAVES STORAGE)  
2050 SQ. FT. (190.45 SQ. M.)  
OUTBUILDING = 219 SQ. FT. (20.31 SQ. M.)

Snellers Twickenham Lettings  
64-66 Heath Road  
Twickenham  
TW1 4BX  
020 8892 5678  
twickenhamlettings@snellers.co.uk

Energy Rating: C We aim to make our particulars both accurate and reliable. However they are not guaranteed; nor do they form part of an offer or contract. If you require clarification on any points then please contact us, especially if you're traveling some distance to view. Please note that appliances and heating systems have not been tested and therefore no warranties can be given as to their good working order