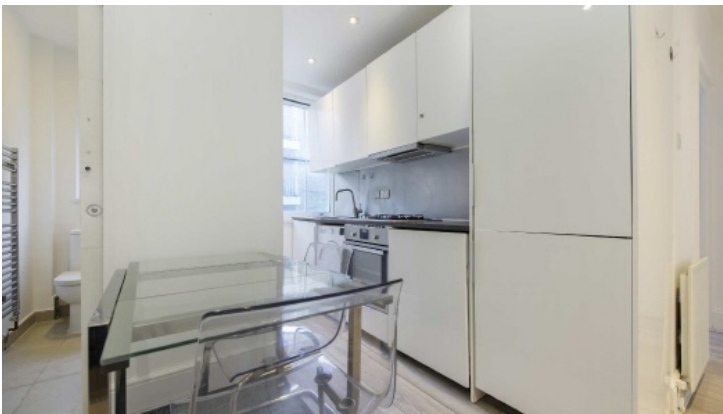


# Frank Harris & Co.



## Pollard House, N1

£500,000

A bright and spacious two bedroom apartment in a charming period mansion block moments from King's Cross. Featuring an open-plan kitchen/reception, low service charge, and no onward chain. Another benefit is the seller was generating a 6.2% yield.

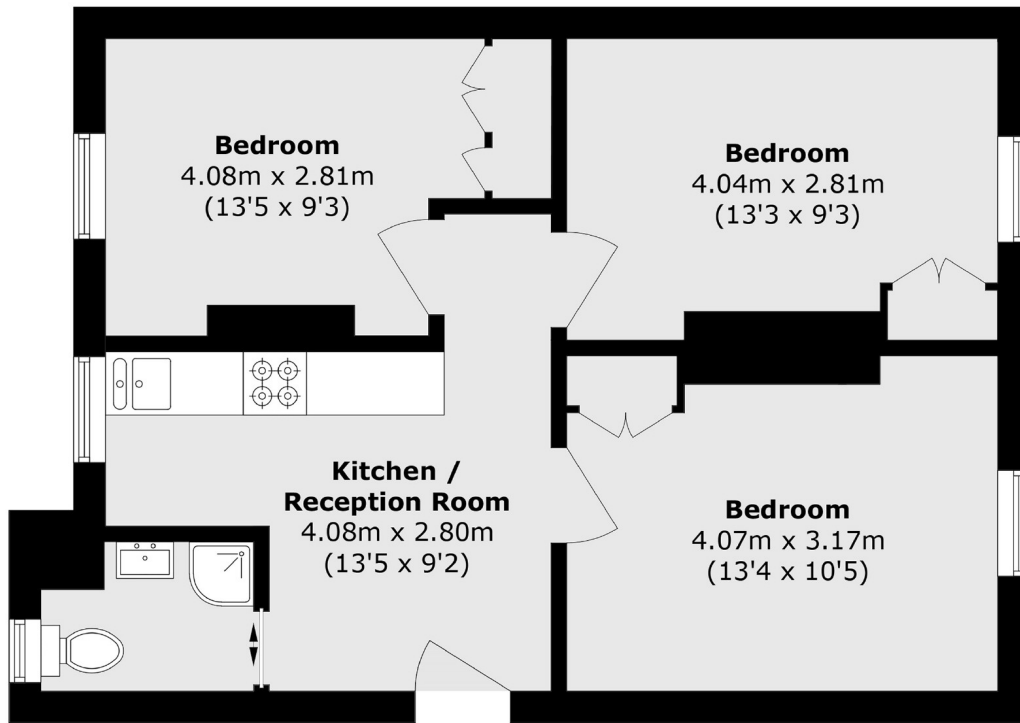


Pollard House is ideally situated on Northdown Street, just a short walk from King's Cross and St Pancras International, offering superb transport links via six Tube lines, National Rail, and Eurostar services. Close to Coal Drops Yard and Granary Square, where designer shops, cafés, restaurants, and cultural spaces create a lively, modern atmosphere.

- King's Cross • Two Bedroom • Low Service Charge •
- No Onward Chain • Period Mansion Block • Open Plan •



# Frank Harris & Co.



Total area (approx.): 52.9 sq. m (569.4 sq. ft)

Frank Harris & Co. Bloomsbury and Kings Cross  
81 Marchmont Street,  
London, WC1N 1AL  
020 7405 4444  
bloomsburysales@frankharris.co.uk

Energy Rating: . We aim to make our particulars both accurate and reliable. However they are not guaranteed; nor do they form part of an offer or contract. If you require clarification on any points then please contact us, especially if you're traveling some distance to view. Please note that appliances and heating systems have not been tested and therefore no warranties can be given as to their good working order.

