

**sansome
& george**

SANSOME
& GEORGE

24 Bramley Green Road, Bramley

Tadley

In Excess of **£550,000**

24 Bramley Green Road

Bramley, Tadley

Sansome & George - Introducing this charming and spacious modern detached house in the picturesque village setting. Boasting a generous 1,365 square feet of living space, this property offers 5 BEDROOM detached home is ideal for a growing family or those in need of additional space. The house exudes a welcoming and inviting atmosphere, with a generous garden, a conservatory, off-street parking, and a garage for added convenience. Situated in a sought-after development, this property provides a great balance of tranquillity and modern living. Don't miss the opportunity to make this house your new home. Contact us today to arrange a viewing and experience the charm and comfort this property has to offer.

Local Authority - Basingstoke & Deane

Council Tax Band - E

Tenure: Freehold

EPC Energy Efficiency Rating: D

EPC Environmental Impact Rating: E





SANSOME
&GEORGE



SANSOME
&GEORGE



SANSOME
&GEORGE



SANSOME
&GEORGE

SANSOME
& GEORGE

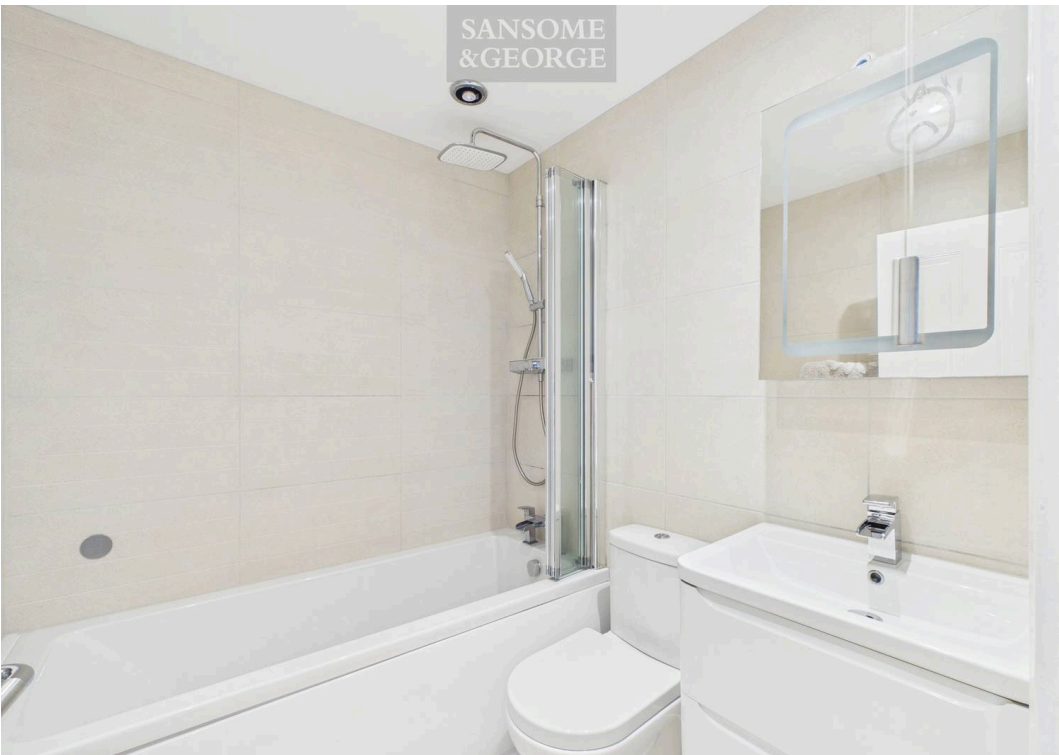
24 Bramley Green Road

Bramley, Tadley

- 5 Bedroom detached home
- Spacious garden
- Conservatory with garden access
- Off-road parking
- Integral garage
- Modern kitchen with integrated appliances
- Open plan living area
- Hardwood flooring
- Well-maintained front garden
- Garage and Driveway



sansome
& george



SANSOME
&GEORGE



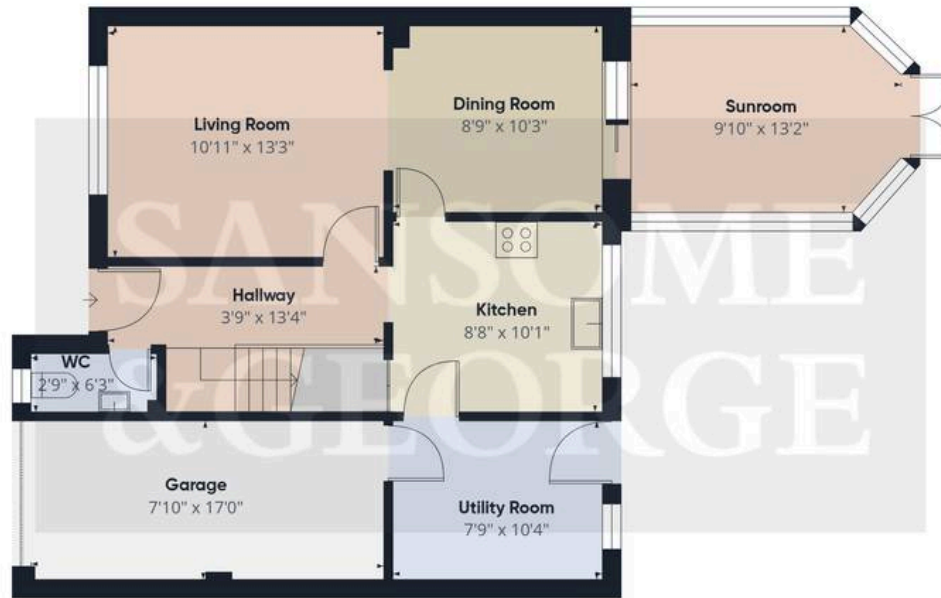
SANSOME
&GEORGE



SANSOME
&GEORGE

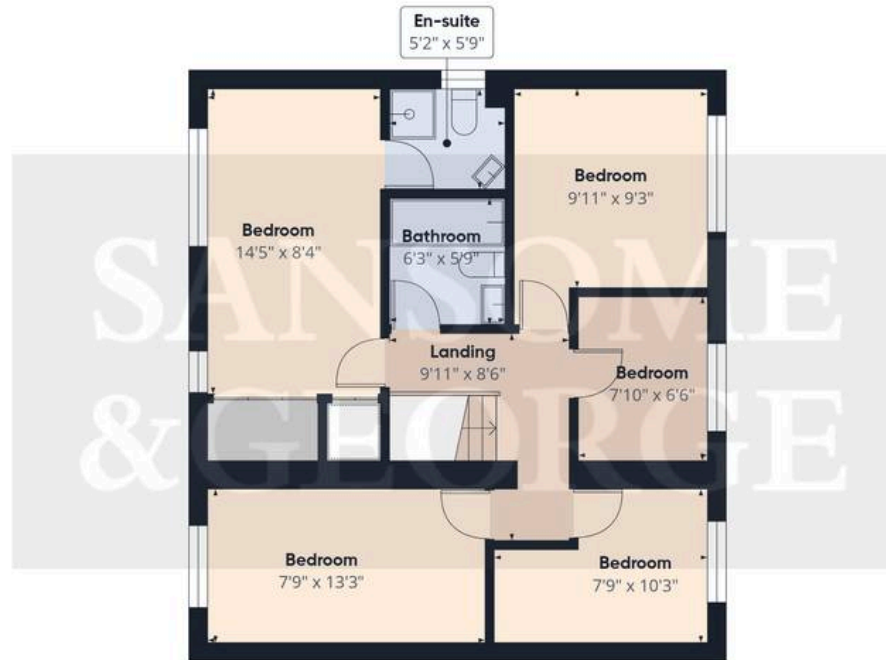


SANSOME
&GEORGE



Floor 0

Approximate total area⁽¹⁾
1365 ft²



Floor 1



(1) Excluding balconies and terraces

Calculations reference the RICS IPMS 3C standard. Measurements are approximate and not to scale. This floor plan is intended for illustration only.

SANSOME
&GEORGE



SANSOME
&GEORGE



SANSOME
&GEORGE



SANSOME
&GEORGE





Sansome & George Bramley Office

Sansome & George, Sherfield Road – RG26 5AG

01256 882979 • • www.sansomeandgeorge.co.uk/

Disclaimer: Every attempt has been made to ensure accuracy, however these property particulars are approximate and for illustrative purposes only. They have been prepared in good faith and they are not intended to constitute part of an offer of contract. We have not carried out a structural survey and the services, appliances and specific fittings have not been tested. All photographs, measurements, floor plans and distances referred to are given as a guide only