



St. Johns Wood Road, NW8

£3,990 Per calendar month

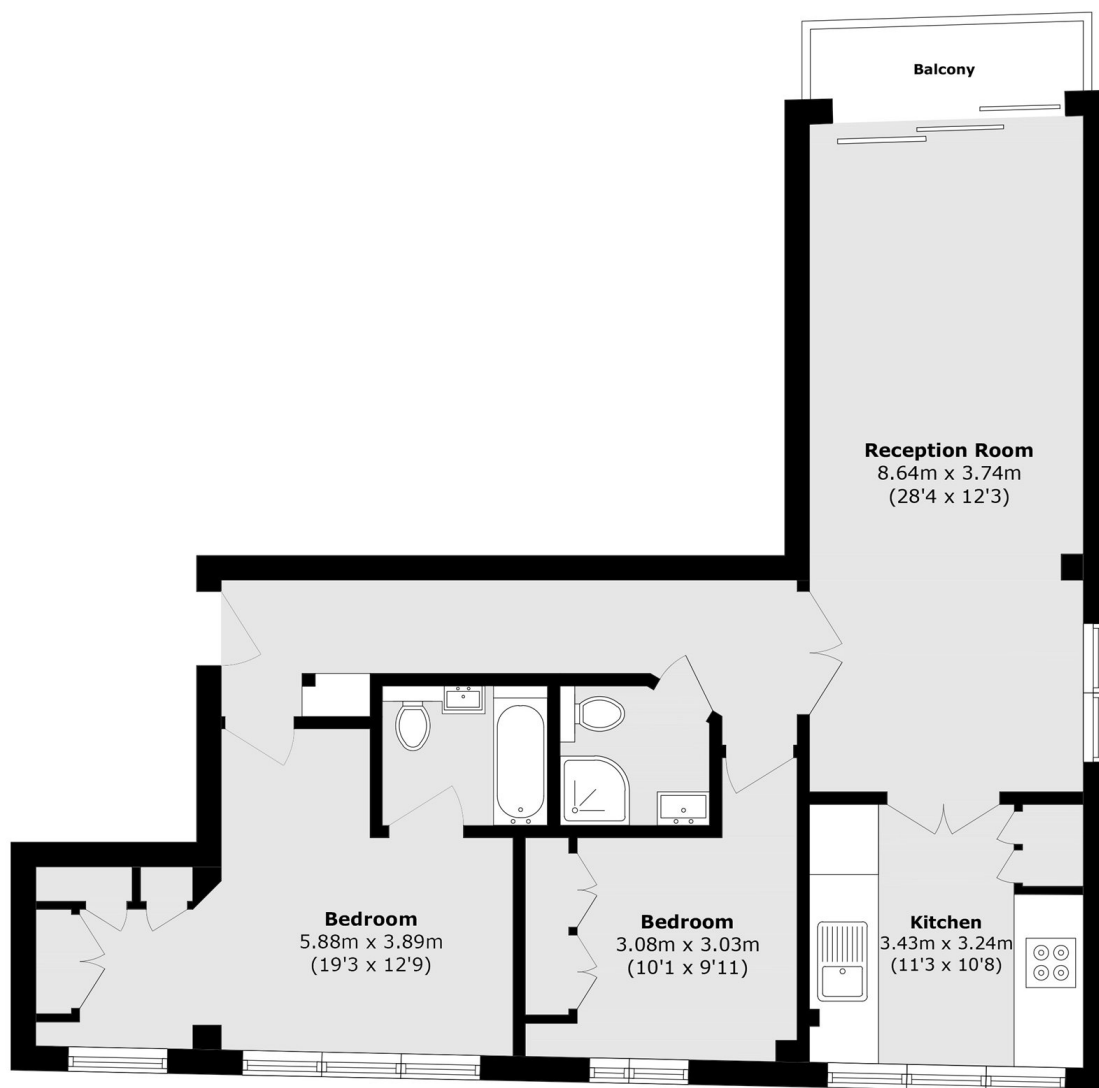
Two bedroom, two bathroom apartment in a portered block. Spacious reception room with balcony, separate modern kitchen, master bedroom with en suite bathroom, second double bedroom and family bathroom.

Lords View is located on St. John's Wood Road which is within walking distance of St John's Wood tube station giving you quick access to Central London and Canary Wharf on the Jubilee Line.

Features

- Two Double Bedrooms
- Two Bathrooms
- Large Reception Room
- Separate Kitchen
- Porter Service
- Balcony

St. Johns Wood Road, London, NW8



Total area (approx.): 83.9 sq. m (903.0 sq. ft)
Balcony area (approx.): 2.8 sq. m (30.1 sq. ft)