



Cleveland Place West, Bath BA1 5DG

For Sale - £229,500



Pleasantly open-plan apartment on the second floor of a centrally located Georgian townhouse with city views. Close to beautiful parks (Sydney Gardens, Henrietta Park, Hedgemoor Park) and walks along the canal.



Property features

Gas central heating | Permit parking for residents (available to purchase from B&NES) | Attractive period fireplaces in the Living Room and very spacious bedroom (with built-in wardrobes)

Size

52.7 sq. m. (567 sq. ft.) approx.

Tenure

Leasehold

Service Charge

Approx. £167 pcm

Council Tax

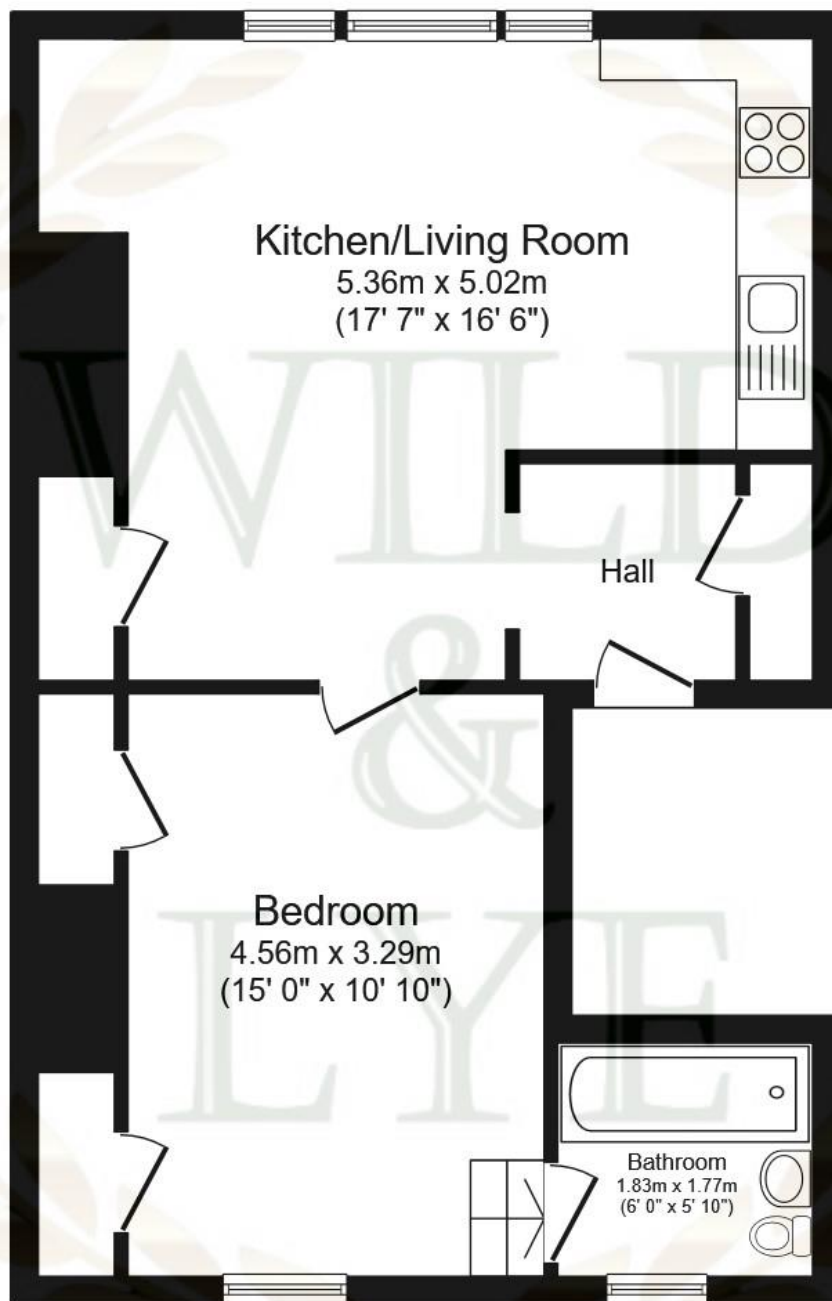
Band B: £1,484.73 – 2022/23



Arrange a viewing

01225 443322

www.wildandlye.com



Second Floor

Important Notice 1. Particulars: These particulars are not an offer or contract, nor part of one. You should not rely on statements by Wild & Lye in the particulars or by word of mouth or in writing ("information") as being factually accurate about the property, its condition or its value. Neither Wild & Lye nor any joint agent has any authority to make any representations about the property, and accordingly any information given is entirely without responsibility on the part of the agents, seller(s) or lessor(s). 2. Photos etc: The photographs show only certain parts of the property as they appeared at the time they were taken. Areas, measurements and distances given are approximate only. 3. Regulations etc: Any reference to alterations to, or use of, any part of the property does not mean that any necessary planning, building regulations or other consent has been obtained. A buyer or lessee must find out by inspection or in other ways that these matters have been properly dealt with and that all information is correct.

Score	Energy rating	Current	Potential
92+	A		
81-91	B		81 B
69-80	C	73 C	
55-68	D		
39-54	E		
21-38	F		
1-20	G		

