



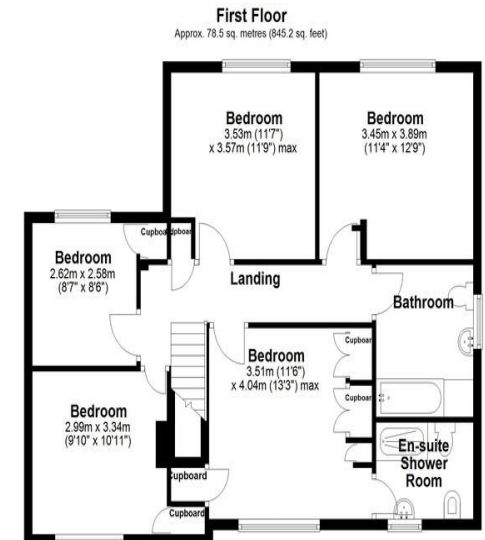
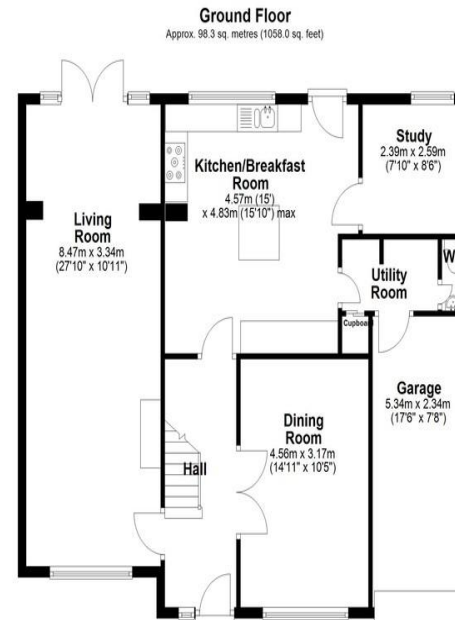
30 KINGSMEAD, LECHLADE, GL7 3BW

GUIDE PRICE £625,000

SAMUEL MILES ARE DELIGHTED TO OFFER FOR SALE THIS THOUGHTFULLY EXTENDED FIVE BEDROOM DETACHED FAMILY HOME IN THE SOUGHT AFTER COTSWOLD MARKET TOWN OF LECHLADE.

TO THE GROUND FLOOR ARE A DUAL ASPECT SITTING ROOM, SEPARATE DINING ROOM, KITCHEN/BREAKFAST ROOM, STUDY & UTILITY/CLOAKROOM.

UPSTAIRS ARE FIVE BEDROOMS & TWO BATHROOMS. THE PROPERTY ALSO BENEFITS FROM GAS RADIATOR CENTRAL HEATING, UPVC DOUBLE GLAZING, A LARGE REAR GARDEN AND GARAGE.



Total area: approx. 176.8 sq. metres (1903.2 sq. feet)



17 High Street, Highworth, Swindon,
Wiltshire, SN6 7AG

www.samuelmiles.co.uk
01793 861663
sales@samuelmiles.co.uk

Agents Note: Whilst every care has been taken to prepare these particulars, they are for guidance purposes only. All measurements are approximate and are for general guidance purposes only and whilst every care has been taken to ensure their accuracy, they should not be relied upon and potential buyers/tenants are advised to recheck the measurements