



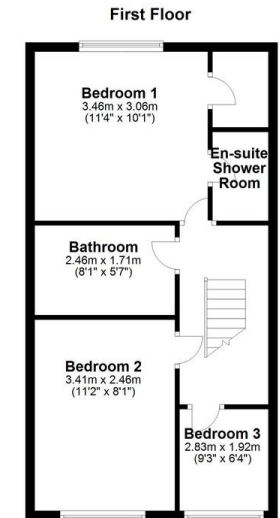
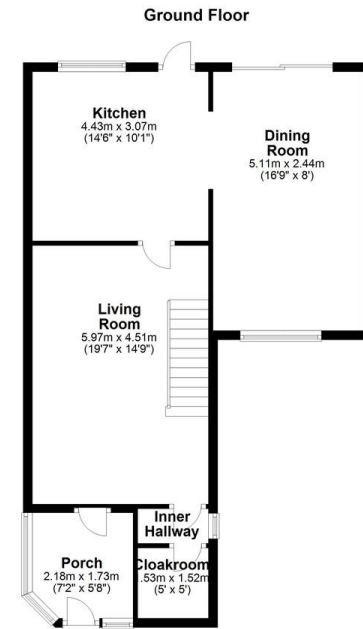
- 
- 
- 
- 

## 5 MALHOUSE CLOSE, ASHBURY, SN6 8PB

£379,995

NO-CHAIN OFFERED FOR SALE A MODERN 3 BEDROOM SEMI DETACHED PROPERTY SITUATED CENTRALLY WITHIN THE BEAUTIFUL VILLAGE LOCATION OF ASHBURY. THE PROPERTY OFFERS ACCOMMODATION COMPRISING: ENTRANCE PORCH, LIVING ROOM, KITCHEN, DINING ROOM AND CLOAKROOM. TO THE FIRST FLOOR: 3 BEDROOMS AND A FAMILY BATHROOM, A SMALL EN-SUITE SHOWER TO THE MASTER BEDROOM. OUTSIDE: DRIVEWAY PARKING AND LAWNED REAR GARDENS FULLY ENCLOSED.





17 High Street, Highworth, Swindon,  
Wiltshire, SN6 7AG

[www.samuelmiles.co.uk](http://www.samuelmiles.co.uk)  
01793 861663  
[sales@samuelmiles.co.uk](mailto:sales@samuelmiles.co.uk)

Agents Note: Whilst every care has been taken to prepare these particulars, they are for guidance purposes only. All measurements are approximate and are for general guidance purposes only and whilst every care has been taken to ensure their accuracy, they should not be relied upon and potential buyers/tenants are advised to recheck the measurements