



## 22 Riverside Mill

The Back, Chepstow, NP16 5HS

**£950 PCM**



1



1



1



C

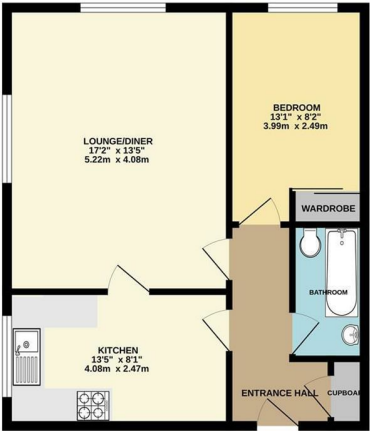
## Description

\* Second Floor Apartment \* Great views of River Wye from Lounge and Bedroom \* Built-in Wardrobes \* Hall \* Living Room \* Kitchen with Integrated 4 Ring Electric Hob with Extractor Over, Single Oven and Grill \* Bathroom with Mixer Tap Shower \* Economy 7 Heating \* Double Glazed \* Parking (Not Allocated) \* Communal Garden Area By River \* Close to Motorway and Railway Networks and Local Amenities \* Unfurnished \* Available Now \*

Monthly Rent: £950  
Deposit: £1425  
Holding Deposit: £219  
Building Materials: Brick  
Sewerage Supply: Mains sewerage  
Broadband Coverage: Ofcom - up to 330mbps  
Mobile Coverage: All carriers - Likely outdoors / Limited indoors  
Utility Supplies: Electrical supply  
Water Supply: Mains  
Parking Status: Off street road parking  
Restrictions - No known restrictions & rights

## Accommodation

GROUND FLOOR  
544 sq.ft. (50.5 sq.m.) approx.



TOTAL FLOOR AREA: 544 sq.ft. (50.5 sq.m.) approx.  
While every effort has been made to ensure the accuracy of the foregoing information, no representation or warranty is made by the advertiser as to the accuracy of the foregoing information. This plan is for illustrative purposes only and should not be used as a basis for any purchase or lease agreement. The property is shown as a guide only and is not intended to be a guarantee of any kind. Measurements are to the center of the room.