



## Price

**£1,500 PCM**

Fees Apply



Available 18/07/25

**Winchelsea Gardens  
Worthing BN11**

**cubitt&west**  
Helping you move forwards





## Main Features

Open House Event

First Floor Apartment

Balcony

Garage

Sought after area

Close to the sea front

## Accommodation

Lounge Dining Room 14'4 x 16'5

Kitchen 8'9 x 9'9

Bedroom 1 11'8 x 11'9

Bedroom 2 9'9 x 12'8

Bedroom 3 8'4 x 9'9

Shower Room 5'7 x 6'6



**Deposit required is £1,730.77**  
**Worthing District - Council Tax Band C**

Renting a property is a big commitment and we recommend that you visit the local authority website and these websites which offer helpful information and advice about letting

[www.gov.uk/government/publications/how-to-rent](http://www.gov.uk/government/publications/how-to-rent)

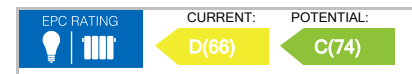
[www.gov.uk/private-renting](http://www.gov.uk/private-renting)

[www.cubittandwest.co.uk/renting/tenancy-fees-individuals/](http://www.cubittandwest.co.uk/renting/tenancy-fees-individuals/)

[www.gov.uk/green-deal-energy-saving-measures](http://www.gov.uk/green-deal-energy-saving-measures)

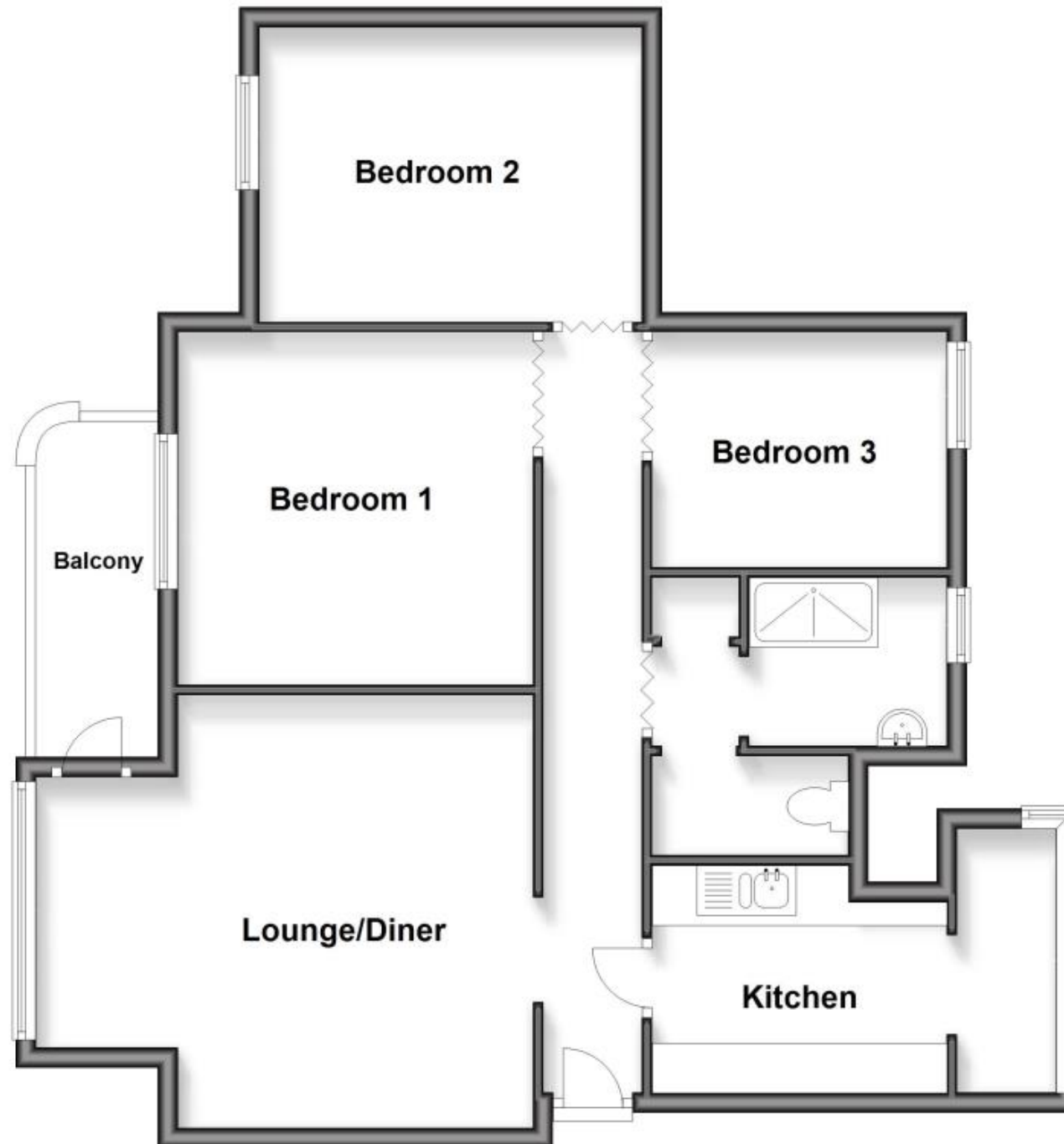
**Call Bognor Regis 01243 860290 ■ [cubittandwest.co.uk](http://cubittandwest.co.uk)**

IMPORTANT INFORMATION: Please contact our Lettings Team who will confirm the total costs involved in renting this property. For clarification, we wish to inform the prospective tenant that we have prepared these details as a general guide. The agent has not carried out a detailed survey nor tested the services, appliances, or specific fittings (unless otherwise stated), and no warranty can be given as to their condition. All room measurements are taken at floor level. We strongly recommend that all the information which we provide about the property is verified by yourself and your advisers. The contents of this publication are © Cubitt & West, 2015. Cubitt & West is a trading name of Arun Estates Limited Registered in England No. 2597969



# First Floor

Approx. 78.8 sq. metres (847.9 sq. feet)



Total area: approx. 78.8 sq. metres (847.9 sq. feet)