



55 Raleigh Crescent

A very conveniently located modern detached three bedroom family house, close to Deer Park shops and primary school and within easy reach of the town centre amenities.

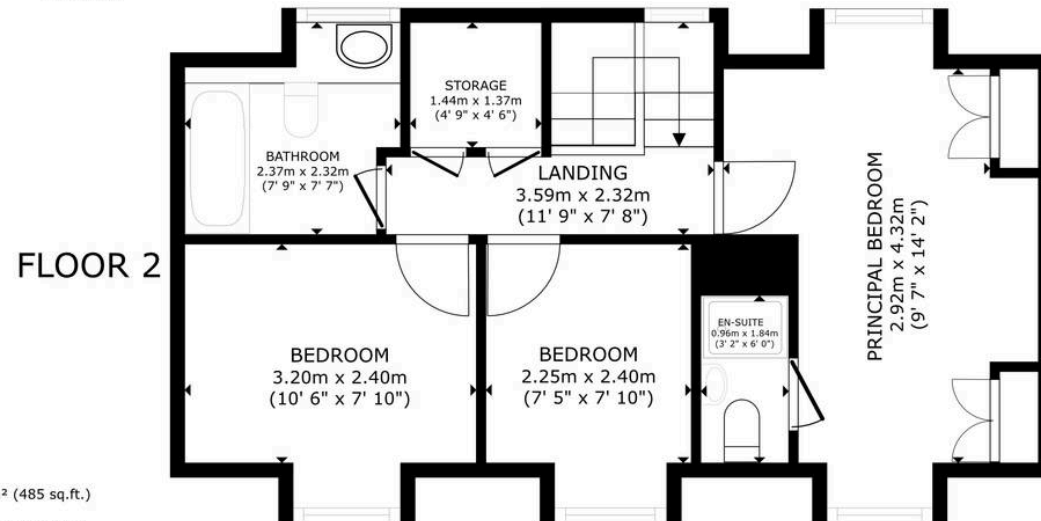
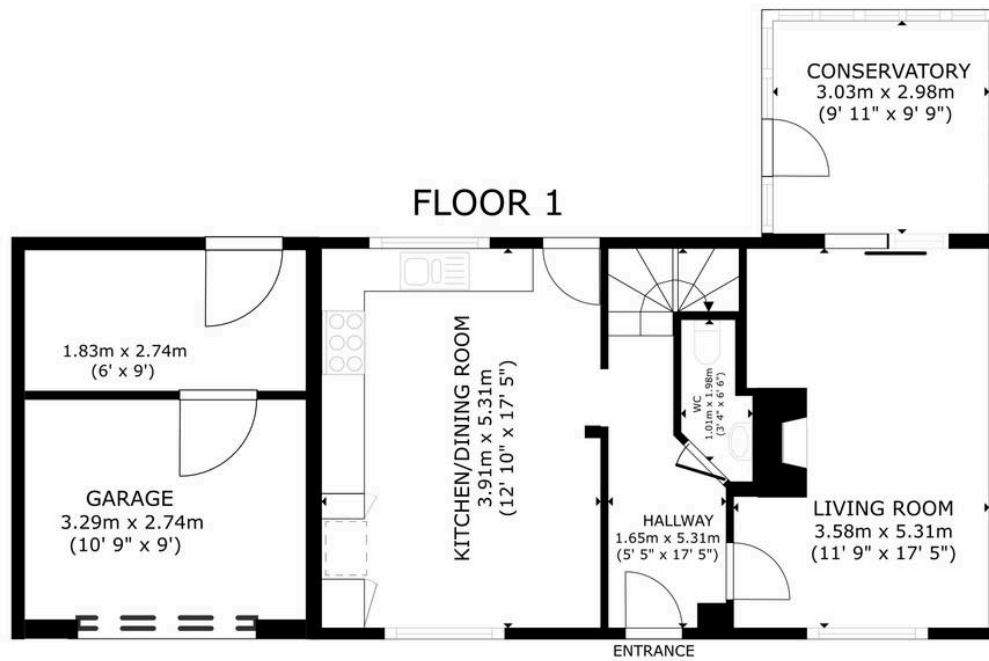
The nicely presented accommodation briefly comprises entrance hall, cloakroom, sitting room with a wood burning stove and patio doors accessing the conservatory, a lovely kitchen/dining room with Island unit, three bedrooms, an ensuite shower room and main bathroom. Gas central heating (boiler replaced in 2025), garage (currently with an internal stud wall as used for storage), off road parking and a nice size rear garden.

Council Tax band: D

Tenure: Freehold







GROSS INTERNAL AREA
FLOOR 1 59.3 m² (638 sq.ft.) FLOOR 2 45.0 m² (485 sq.ft.)
TOTAL : 104.3 m² (1,123 sq.ft.)
SIZES AND DIMENSIONS ARE APPROXIMATE, ACTUAL MAY VARY.

Martyn Cox & Company

6-8 Corn Street, Witney - OX28 6BL

01993 779020 • property@martyncox.com • www.martyncox.com



These particulars are approximate and for illustrative purposes only. They have been prepared in good faith and not intended to be part of an offer or contract. We have not carried out a structural survey and the services, appliances and fittings have not been tested. photos, measurements, floor plans, distances, lease details, services charges and ground rent are given as a guide only.