





## Early Road

A superb three-bedroom detached house with a well-maintained garden and driveway parking, located in the sought-after area of Early Road. The generous accommodation comprises an entrance porch, hallway with an under-stairs cupboard, an extended open-plan kitchen and dining area, beautifully enhanced by a lantern rooflight that floods the space with natural light, a living room with a feature fireplace, and a WC. Upstairs, there is a principle bedroom with adjoining dressing room, two further bedrooms and a family bathroom. The property benefits from gas central heating.

To the rear of the property, you'll find a beautifully landscaped garden, predominantly laid to lawn, featuring well-established flowerbeds and mature planting along the borders. A charming seating area provides the perfect spot to relax and enjoy the tranquil surroundings.

Council Tax band: D

Tenure: Freehold

EPC Energy Efficiency Rating: D

EPC Environmental Impact Rating: D

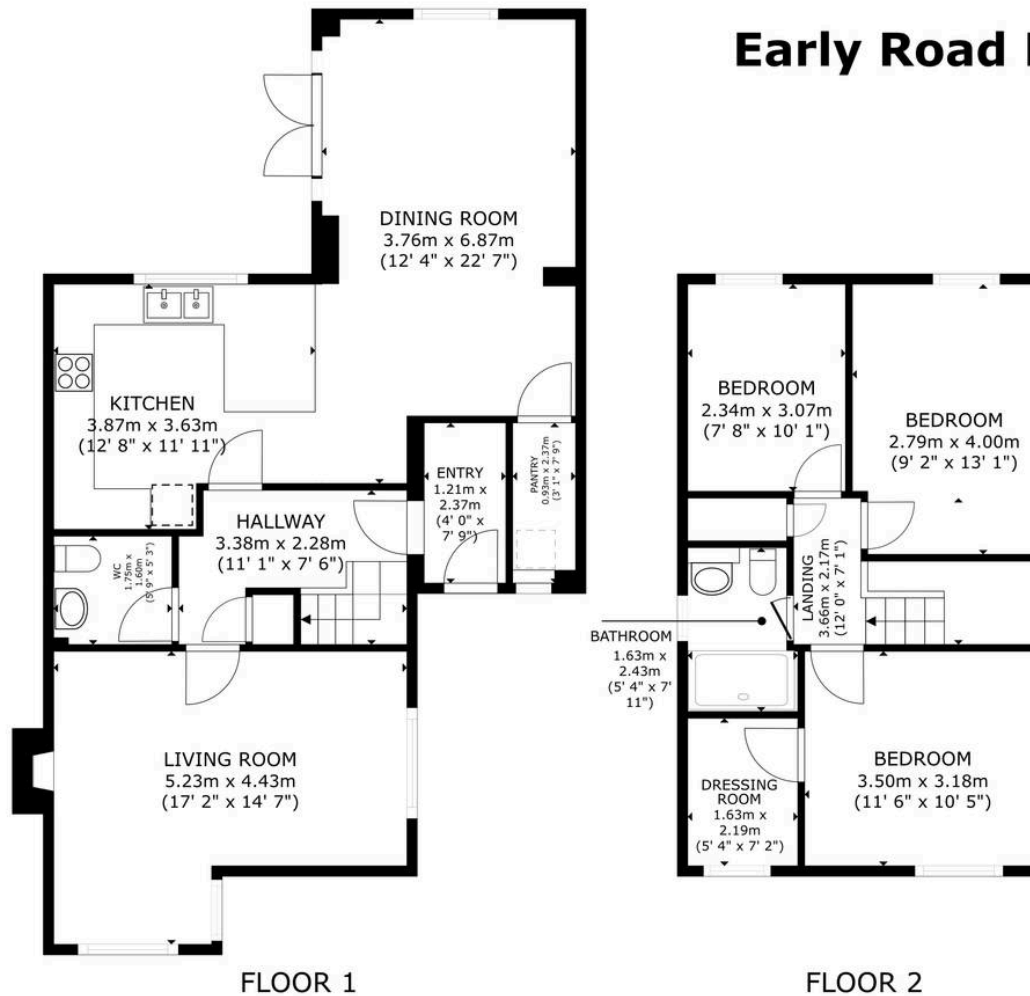








## Early Road Floor Plan



FLOOR 1 73.5 m<sup>2</sup> (791 sq.ft.) FLOOR 2 45.0 m<sup>2</sup> (485 sq.ft.)  
 TOTAL : 118.5 m<sup>2</sup> (1,276 sq.ft.)  
 SIZES AND DIMENSIONS ARE APPROXIMATE, ACTUAL MAY VARY.

**Martyn Cox & Company**

6-8 Corn Street, Witney - OX28 6BL

01993 779020 • [property@martyncox.com](mailto:property@martyncox.com) • [www.martyncox.com](http://www.martyncox.com)



These particulars are approximate and for illustrative purposes only. They have been prepared in good faith and not intended to be part of an offer or contract. We have not carried out a structural survey and the services, appliances and fittings have not been tested. photos, measurements, floor plans, distances, lease details, services charges and ground rent are given as a guide only.