

MARTYN COX
— & COMPANY —



Flat 6, Woodley House, 34 Woodley Green – OX28 1BF
Witney

Guide Price £215,000

Flat 6

Woodley House, Witney

Excellent 2 bedroomed top floor flat with views across a pleasant open park area within popular Madley Park. Vacant and in good order throughout with the benefit of allocated parking. Ideal first time buyer or investment opportunity.

Council Tax band: C

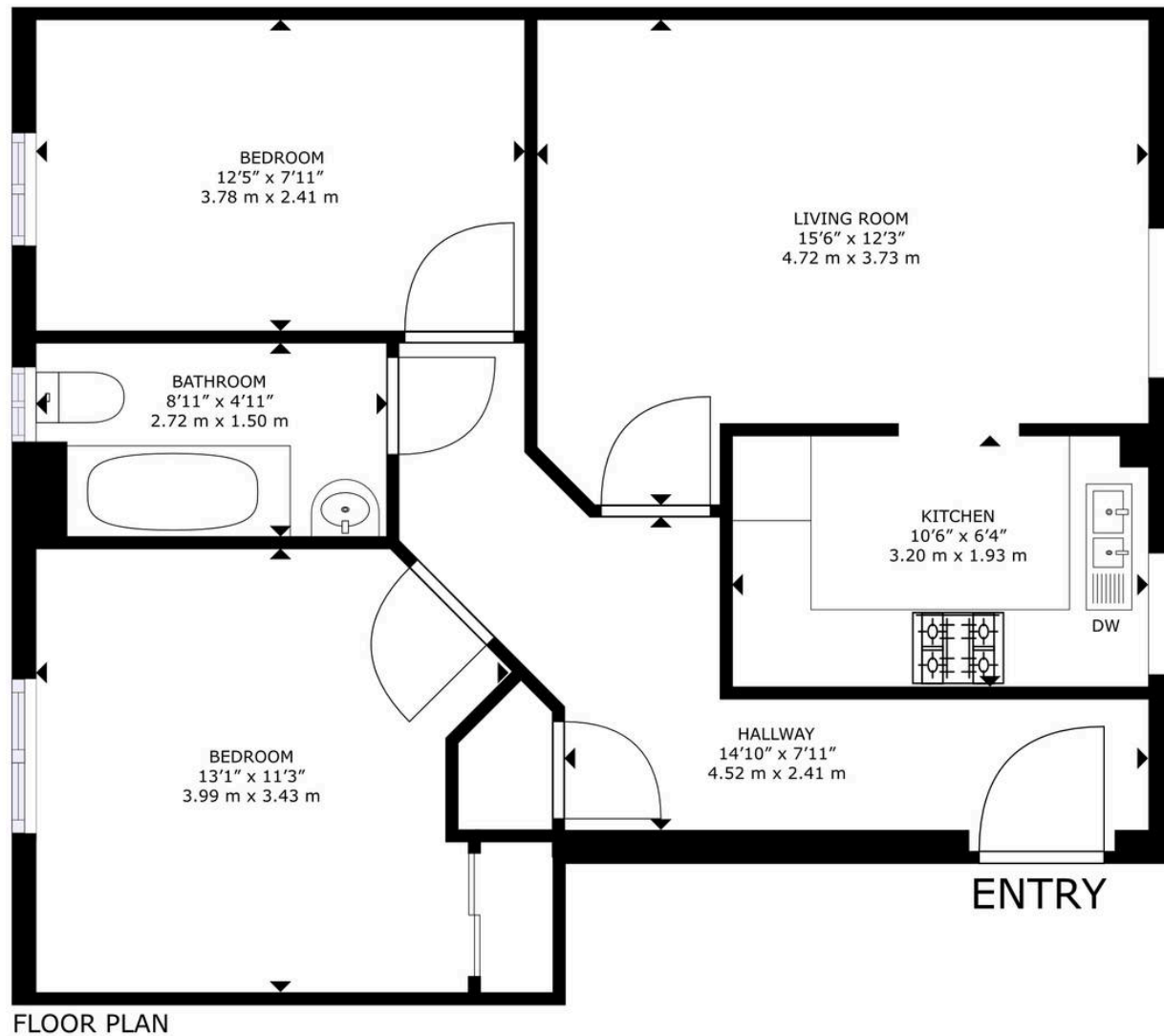
Tenure: Leasehold

EPC Energy Efficiency Rating: C

EPC Environmental Impact Rating: C







GROSS INTERNAL AREA
FLOOR PLAN: 630 sq. ft, 58 m²
SIZES AND DIMENSIONS ARE APPROXIMATE, ACTUAL MAY VARY.

Martyn Cox & Company

6-8 Corn Street, Witney - OX28 6BL

01993 779020 • property@martyncox.com • www.martyncox.com



These particulars are approximate and for illustrative purposes only. They have been prepared in good faith and not intended to be part of an offer or contract. We have not carried out a structural survey and the services, appliances and fittings have not been tested. photos, measurements, floor plans, distances, lease details, services charges and ground rent are given as a guide only.