

MARTYN COX  
— & COMPANY —



Harvest Way, Witney – OX28 1EG  
Witney

Guide Price £400,000



# Harvest Way

Witney

Council Tax band: D

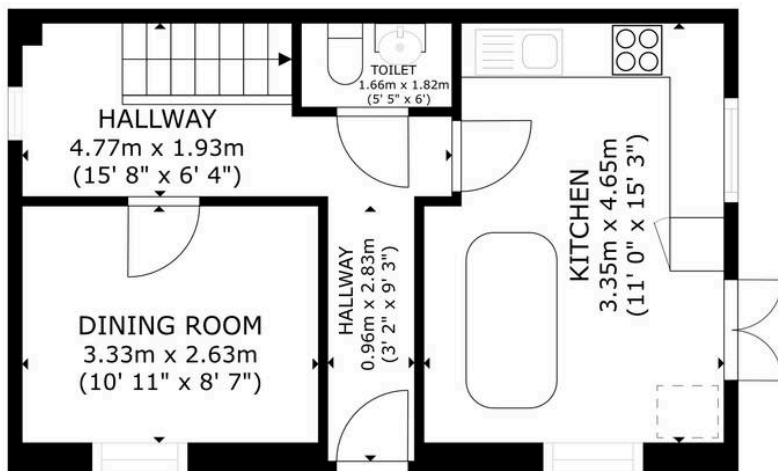
Tenure: Freehold

- 3 storey town house
- 3 / 4 bedrooms (en suite to principal)
- Modern fitted kitchen
- Double garage
- Close to amenities, schools and bus route to Oxford
- Ground floor WC

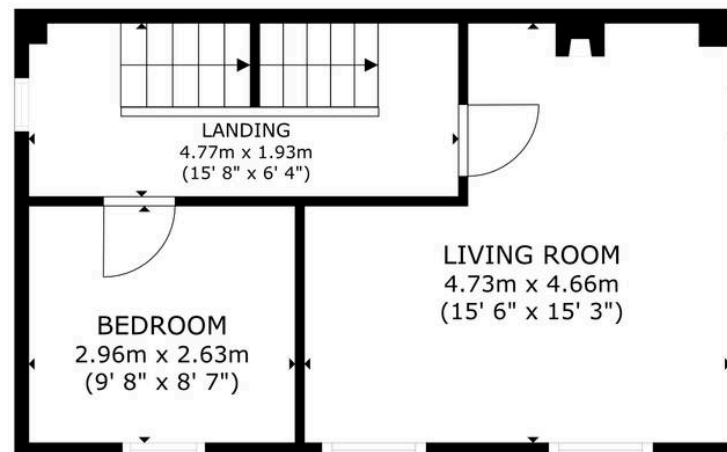




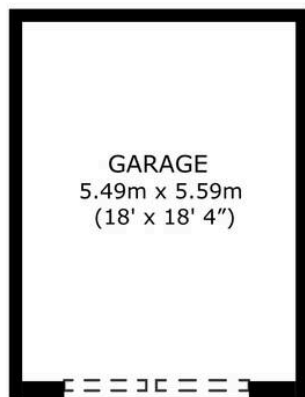




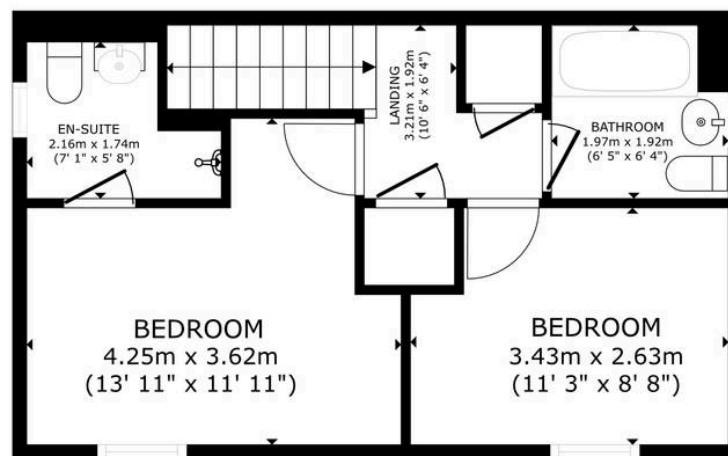
FLOOR 1



FLOOR 2



GARAGE NOT SHOWN IN ACTUAL LOCATION / ORIENTATION



FLOOR 3

GROSS INTERNAL AREA (GARAGE NOT SHOWN IN ACTUAL LOCATION / ORIENTATION))  
 FLOOR 1 36.4 m<sup>2</sup> (392 sq.ft.) FLOOR 2 36.3 m<sup>2</sup> (390 sq.ft.) FLOOR 3 36.2 m<sup>2</sup> (390 sq.ft.)  
 TOTAL : 108.9 m<sup>2</sup> (1,173 sq.ft.)

SIZES AND DIMENSIONS ARE APPROXIMATE, ACTUAL MAY VARY.

**Martyn Cox & Company**

6-8 Corn Street, Witney - OX28 6BL

01993 779020 • [property@martyncox.com](mailto:property@martyncox.com) • [www.martyncox.com](http://www.martyncox.com)



These particulars are approximate and for illustrative purposes only. They have been prepared in good faith and not intended to be part of an offer or contract. We have not carried out a structural survey and the services, appliances and fittings have not been tested. photos, measurements, floor plans, distances, lease details, services charges and ground rent are given as a guide only.