

**MARTYN COX**  
— & COMPANY —



**11 Charter Place Church Green, Witney – OX28 4BR**  
Witney

Guide Price **£575,000**

# 11 Charter Place Church Green

Witney

A superb 3-storey mid terraced retirement town house situated in one of the most enviable positions in Witney town centre, located just off Church Green. Beautifully kept and with no onward chain.

Council Tax band: E

Tenure: Leasehold

EPC Energy Efficiency Rating: C

- Superb central location
- Three double bedrooms
- Rarely available
- Generous living space
- Parking
- Impeccable throughout
- Retirement complex for the discerning

Ground rent £500 per year

Quarterly Service Charge in advance £1,174.18





**11 Charter Place, Witney, OX28 4BR, GB**  
Approximate Gross Internal Area = 139.5 sq m / 1501 sq ft

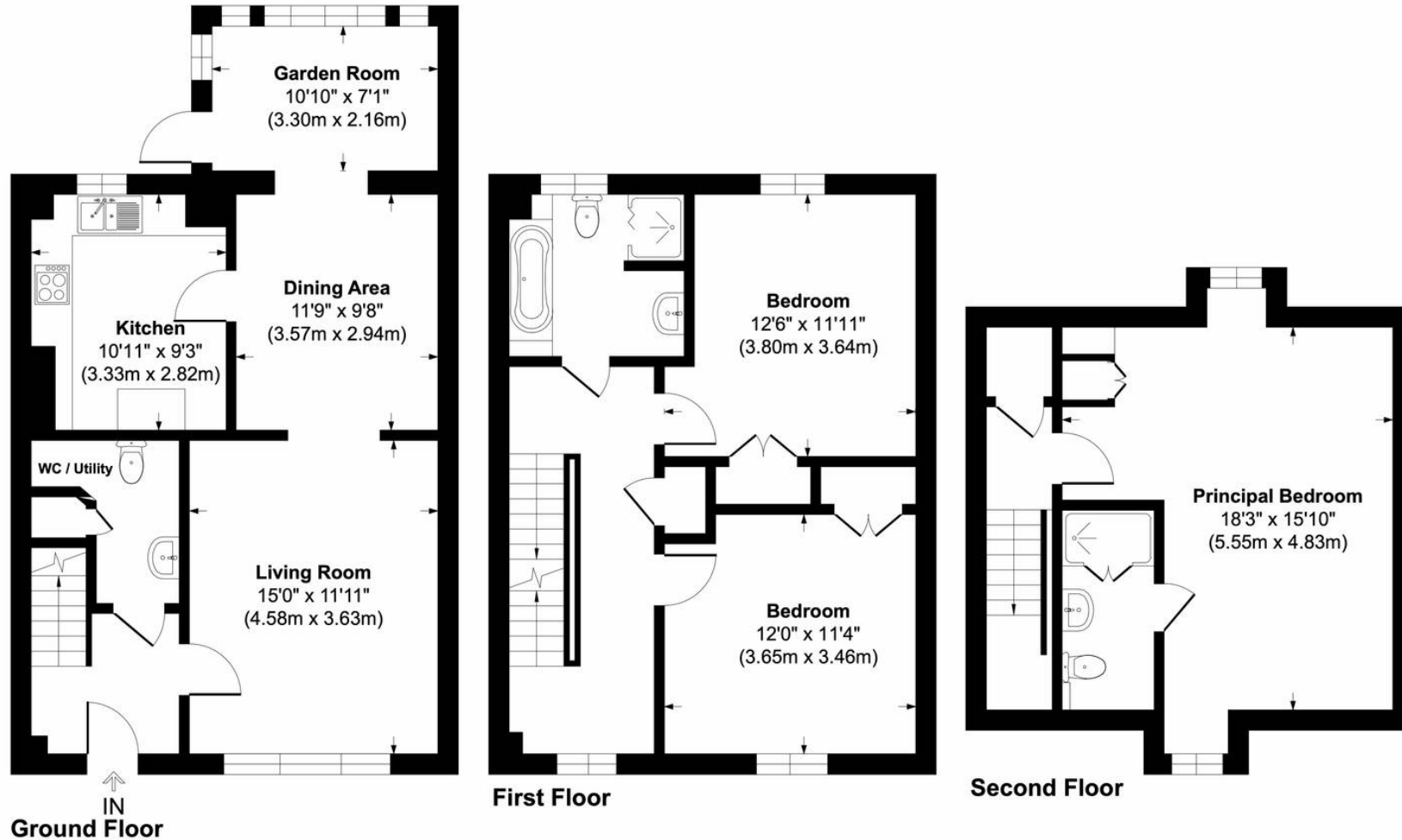


Illustration for identification purpose only, measurements approximate, and not to scale.

**Martyn Cox & Company**

6-8 Corn Street, Witney - OX28 6BL

01993 779020 • [property@martyncox.com](mailto:property@martyncox.com) • [www.martyncox.com](http://www.martyncox.com)



These particulars are approximate and for illustrative purposes only. They have been prepared in good faith and not intended to be part of an offer or contract. We have not carried out a structural survey and the services, appliances and fittings have not been tested. photos, measurements, floor plans, distances, lease details, services charges and ground rent are given as a guide only.