

MARTYN COX  
— & COMPANY —



Flat 30, Windrush Court, 67 St. Marys Mead, OX28 4FD

Witney



## Flat 30 Windrush Court

A rare two bedroom, first floor flat in Windrush Court. The apartment comprises an entrance hall, a semi-open plan kitchen and living room, two double bedrooms with built-in wardrobes and one shower room. The apartment benefits from electric heating, double glazing and two storage cupboards.

Conveniently located, Windrush Court benefits from a site manager, lift access, communal lounge, laundry room, guest suite, residents car park and communal garden.

The property is within Witney Conservation Area.

Only for residents over the age of 60 years.

### **Additional Information:**

#### **Service Charge:**

Approx. £1,586.82 half yearly (September & March)

#### **Ground Rent:**

Approx. £273.52 half yearly (September & February)

Tenure: Leasehold

Leasehold: 125 years from 1989

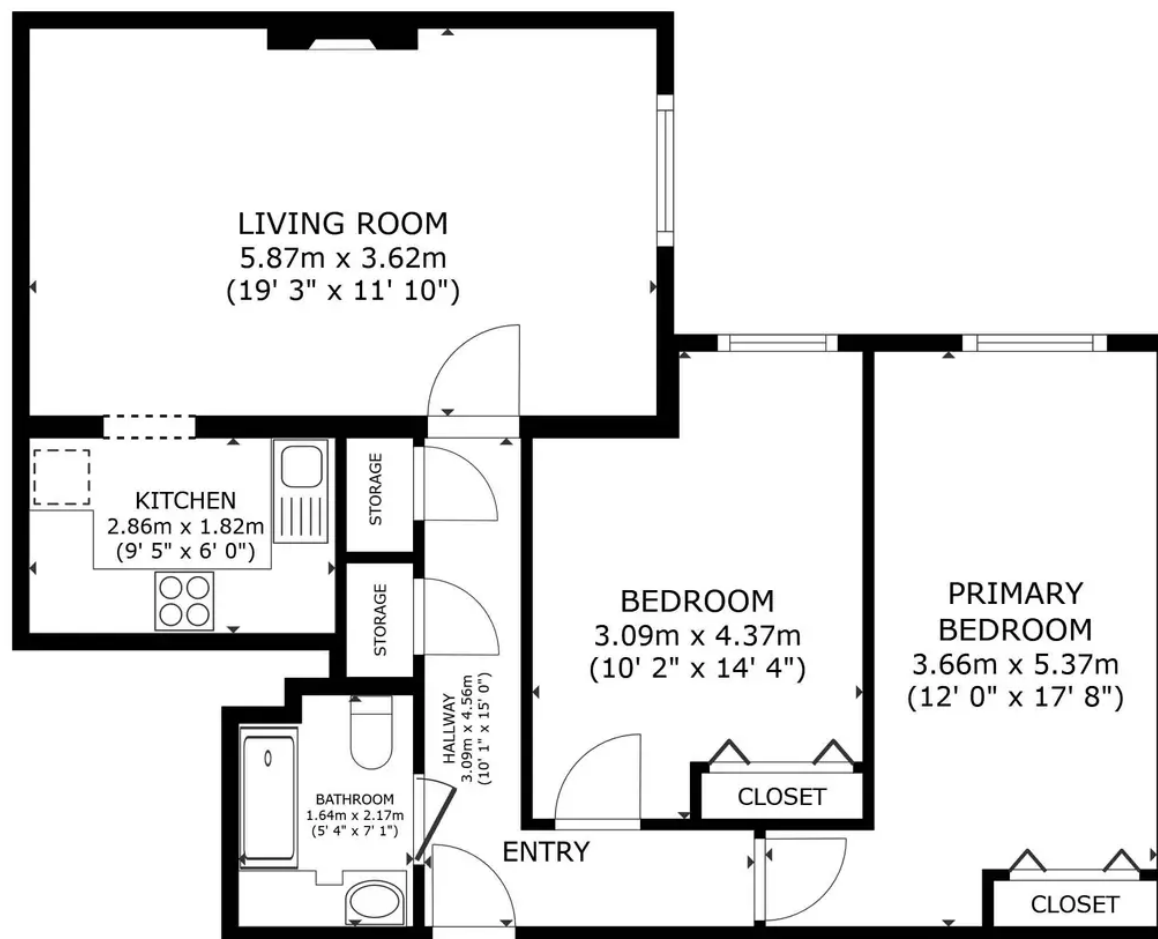
Council Tax band: C

EPC Energy Efficiency Rating: B









FLOOR PLAN

GROSS INTERNAL AREA  
 FLOOR PLAN 68.2 m<sup>2</sup> (734 sq.ft.)  
 TOTAL : 68.2 m<sup>2</sup> (734 sq.ft.)  
 SIZES AND DIMENSIONS ARE APPROXIMATE, ACTUAL MAY VARY.

# Martyn Cox & Company

6-8 Corn Street, Witney - OX28 6BL

01993 779020 • [property@martyncox.com](mailto:property@martyncox.com) • [www.martyncox.com](http://www.martyncox.com)



These particulars are approximate and for illustrative purposes only. They have been prepared in good faith and not intended to be part of an offer or contract. We have not carried out a structural survey and the services, appliances and fittings have not been tested. photos, measurements, floor plans, distances, lease details, services charges and ground rent are given as a guide only.