



20a Foxwood, Aston – OX18 2DZ  
Bampton

## Welcome to 20A Foxwood

Exquisitely presented detached residence with accommodation spanning over three floors, now available for sale for the first time in over 25 years.

From the hallway, a beautifully presented, peaceful sitting room with window to front aspect. Dining room with focal feature gas fire and direct access to conservatory with rear garden views. Comfortable conservatory with doors to side terrace and rear garden. Beautifully fitted kitchen/breakfasting room with shaker style units. Built in dishwasher, six ring gas hob with electric double oven below. Ample base and wall units, feature Belfast sink and space for large fridge freezer. Clever use of space affords this ground floor WC. Tastefully decorated and incorporating a low level WC and vanity wash hand basin.

To the first floor, three double bedrooms and a beautifully presented family bathroom. Fully tiled and benefitting from a double walk in shower, freestanding bath, vanity wash hand basin and low level WC. Large chrome wall mounted heated towel rail. Spanning the whole top floor, this gorgeous and spacious master bedroom has a freestanding bath, separate shower room, WC and vanity wash hand basin.

Council Tax band: E £2,639.30

Tenure: Freehold

**Four bedrooms**

**Detached**

**Three reception rooms**

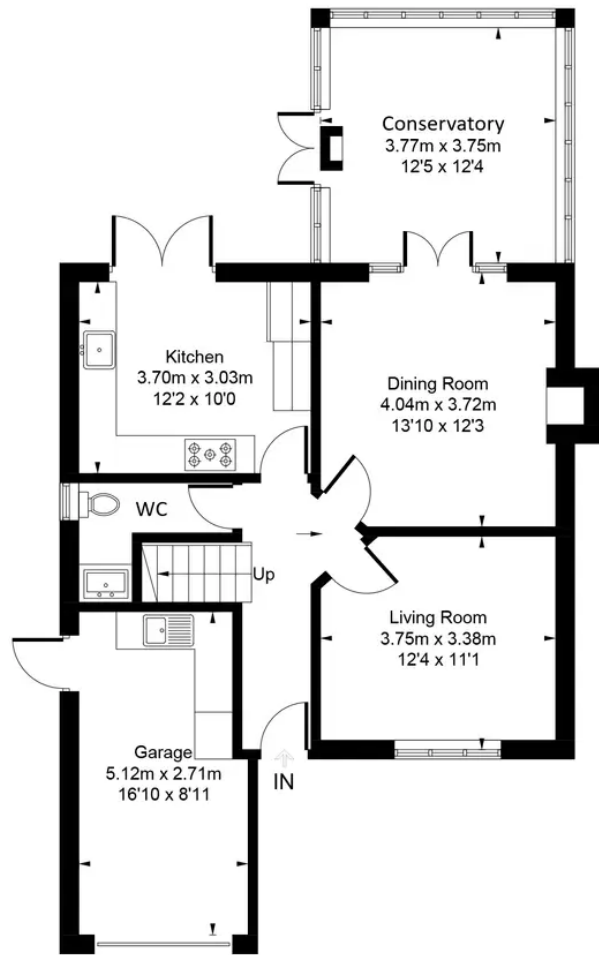
**Exquisitely presented**

**Popular village location**

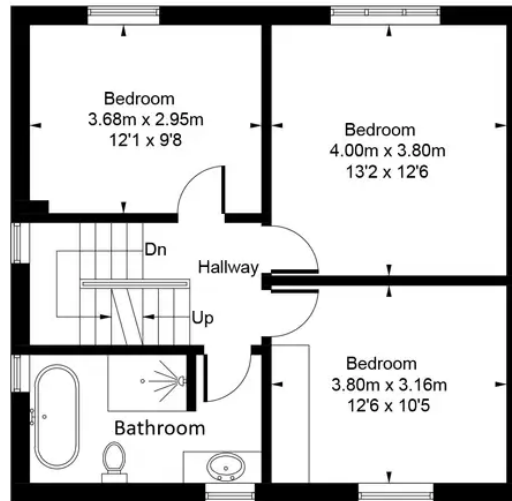




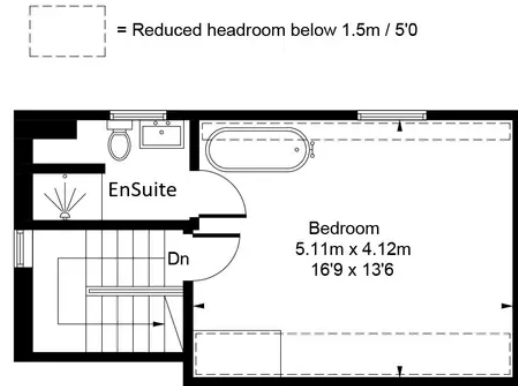
Approximate Gross Internal Area = 150.1 sq m / 1616 sq ft  
 Garage = 13.4 sq m / 144 sq ft  
 Total = 163.5 sq m / 1760 sq ft



Ground Floor



First Floor



Second Floor

# Martyn Cox & Company

Martyn Cox & Company, 6-8 Corn Street, Witney - OX28 6BL

01993 779020 • [property@martyncox.com](mailto:property@martyncox.com) • [www.martyncox.com/](http://www.martyncox.com/)

Every attempt has been made to ensure accuracy, however these property particulars are approximate and for illustrative purposes only. They have been prepared in good faith and they are not intended to constitute part of an offer of contract. We have not carried out a structural survey and the services, appliances and specific fittings have not been tested. All photographs, measurements, floor plans and distances referred to are given as a guide only