



**Modern  
Auction**

**£200,000  
Leasehold**

2x  1x  1x 

**Alpha Court, Hillside  
Road, Whyteleafe,  
Surrey, CR3**

**OVER 60?**

Secure this property  
for up to **59% less!**

**cubitt & west**  
Helping you move forwards





## Main features

- Spacious lower-ground flat
- Ready to move into and make your own
- Walking distance to local stations and transport links
- Allocated Parking space for one car as well as ample visitor spaces
- Chain free

## Accommodation

### GROUND FLOOR

Entrance Hallway

Living Room: 20'3 x 10'8 (6.18m x 3.25m)

Kitchen: 11'4 x 5'9 (3.46m x 1.75m)

Bedroom 1: 11'10 x 10'4 (3.61m x 3.15m)

Bedroom 2: 10'5 x 8'6 (3.18m x 2.59m)

Bathroom: 6'8 x 5'10 (2.03m x 1.78m)

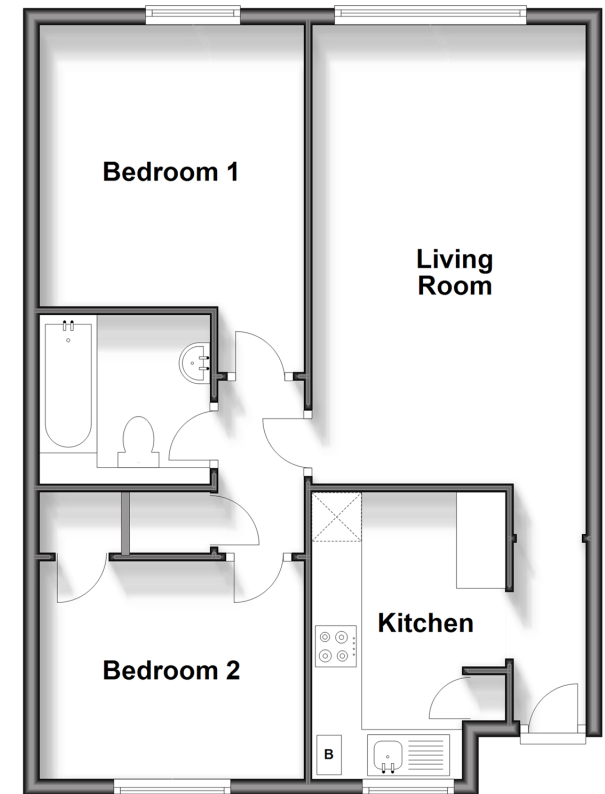
### OUTSIDE

Communal Gardens

Allocated Parking

### Ground Floor

Approx. 60.0 sq. metres (646.2 sq. feet)



**Call Caterham - 01883 331000 ■ [cubittandwest.co.uk](http://cubittandwest.co.uk)**

- Legal advice should be taken to verify fixtures/fittings, planning, alterations and/or lease details
- Appliances & services are untested, dimensions are approximate and floor plans are not to scale
- Through a Homewise Home For Life Plan people aged 60+ can secure this property for up to 59% less, by purchasing a Lifetime Lease.



24407958/20250120/JB/AFO