



Guide Price
£300,000

Leasehold

2x  1x  1x 

**Gresham Avenue,
Warlingham, Surrey,
CR6**

OVER 60?

Secure this property
for up to **59% less!**

cubitt&west
Helping you move forwards



Main features

- Ground floor maisonette
- Direct access to private rear garden
- Potential for driveway subject to planning permission
- Spacious accommodation with excellent storage throughout
- Bedrooms with built-in wardrobes
- Quiet location in popular Warlingham

Accommodation

GROUND FLOOR

Entrance Hallway

Lounge: 14'0 x 11'0 (4.27m x 3.36m)

Bedroom 2: 11'0 x 8'0 (3.36m x 2.44m)

Bedroom 1: 13'0 x 10'11 (3.97m x 3.33m)

Bathroom: 6'0 x 5'0 (1.83m x 1.53m)

Kitchen: 10'11 x 10'0 (3.33m x 3.05m)

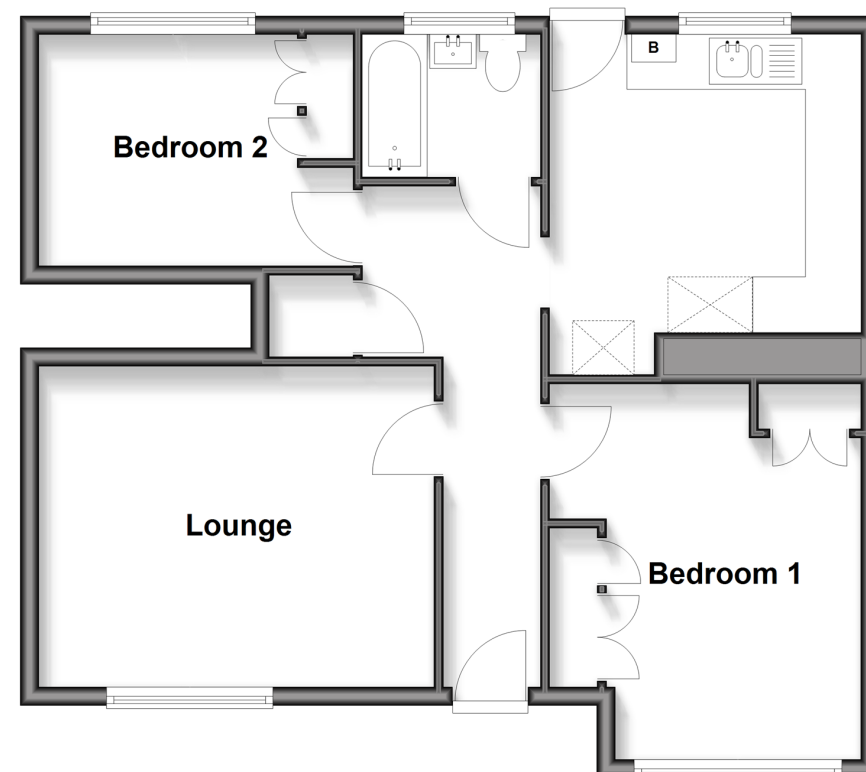
OUTSIDE

Front Garden

Rear Garden

Ground Floor

Approx. 62.0 sq. metres (667.0 sq. feet)



Call Caterham - 01883 331000 ■ cubittandwest.co.uk

- Legal advice should be taken to verify fixtures/fittings, planning, alterations and/or lease details
- Appliances & services are untested, dimensions are approximate and floor plans are not to scale
- Through a Homewise Home For Life Plan people aged 60+ can secure this property for up to 59% less, by purchasing a Lifetime Lease



24408320/20260120/KH/KH